



Sublease

West Knox Office

THE TERRACES SUBLEASE

120 Market Place Boulevard
Knoxville, Tennessee 37922

Property Highlights

- Office Space Available in Cedar Bluff
- Prominent location
- Easy access and close proximity to Kingston Pike and I-40
- Located near banking, restaurants, hotels and shopping

Property Description

1,190 SF office for sublease in Cedar Bluff. This office complex offers professionally maintained grounds, a relaxing water feature, mountain views and easy access to Parkside Drive, Kingston Pike and I-40. Put your business in the heart of West Knoxville in this well maintained, professional office complex.

For more information

Michelle Gibbs

O: 865 531 6400
mgibbs@koellamoore.com

Roger M. Moore, Jr, SIOR

O: 865 531 6400
rogermoore@koellamoore.com

DEMOGRAPHICS

Stats	Population	Avg. HH Income
1 Mile	5,033	\$74,259
3 Miles	51,732	\$82,972
5 Miles	123,908	\$84,893

AVAILABLE SPACES

Space	Lease Rate	Size (SF)
154F Market Place Blvd.	\$15.25 - 15.75 SF/yr	1,190
E-142	\$15.00 SF/yr	955

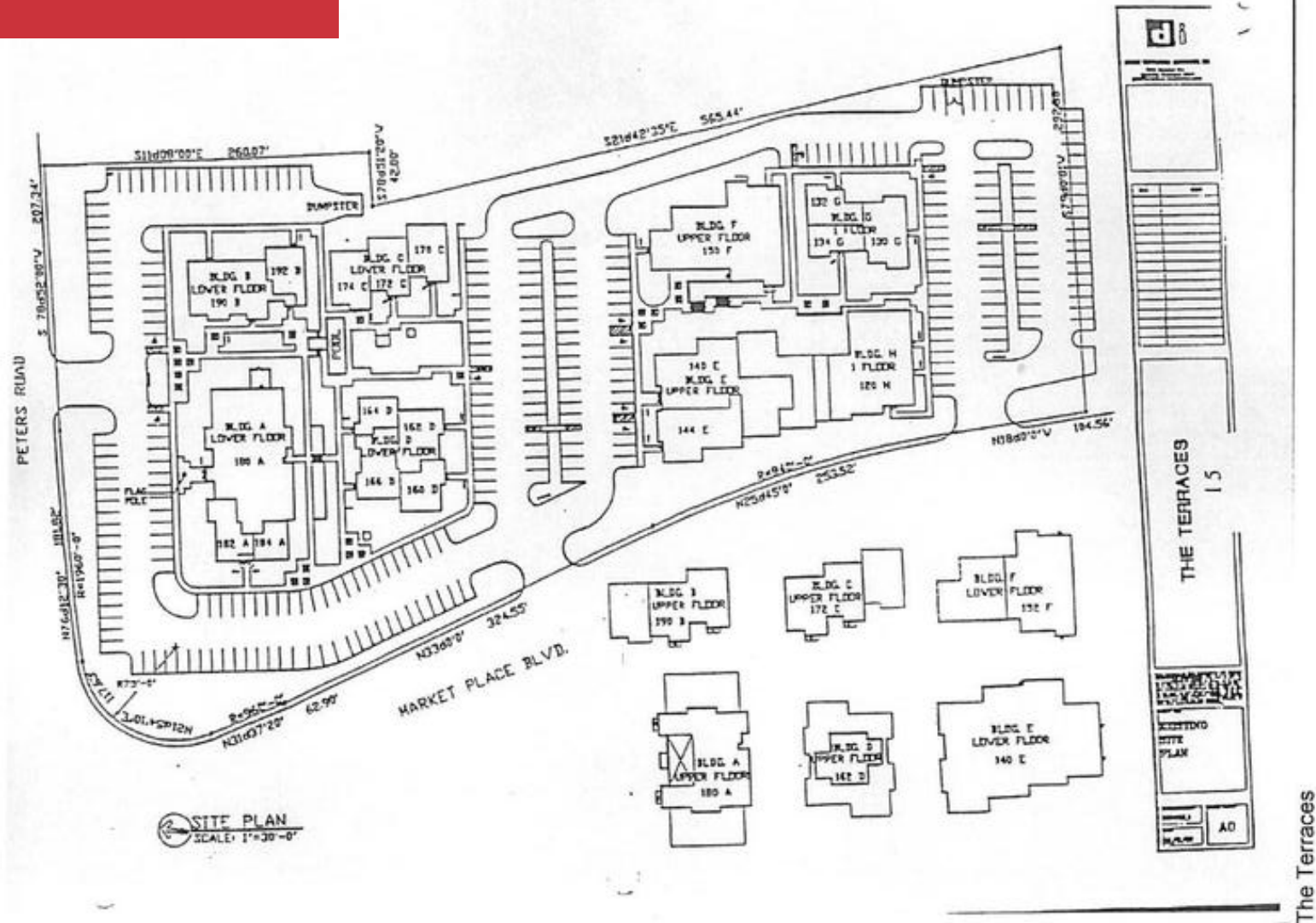
Sublease

The Terraces



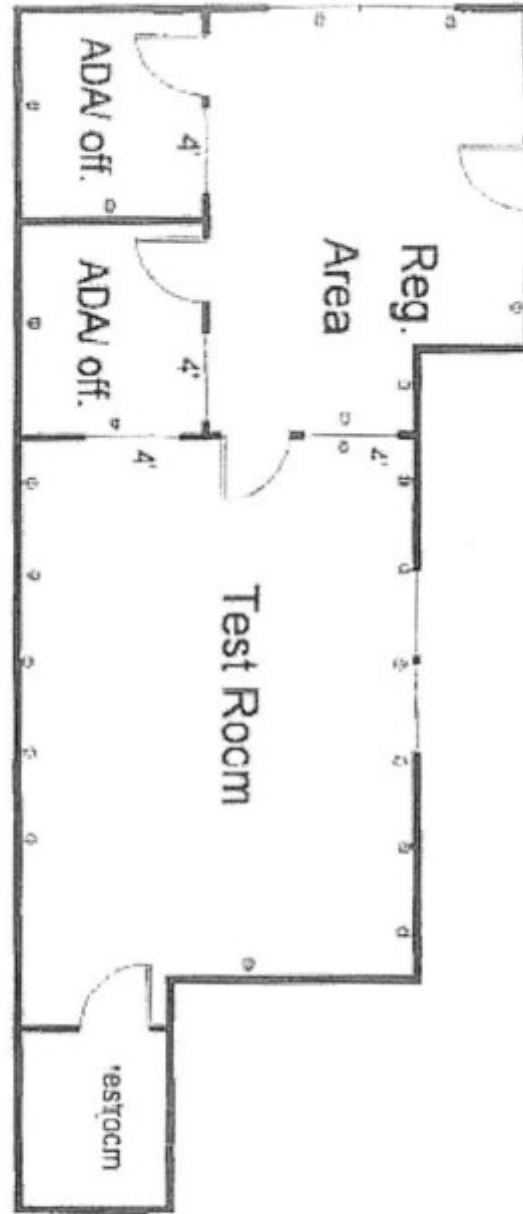
Sublease

The Terraces



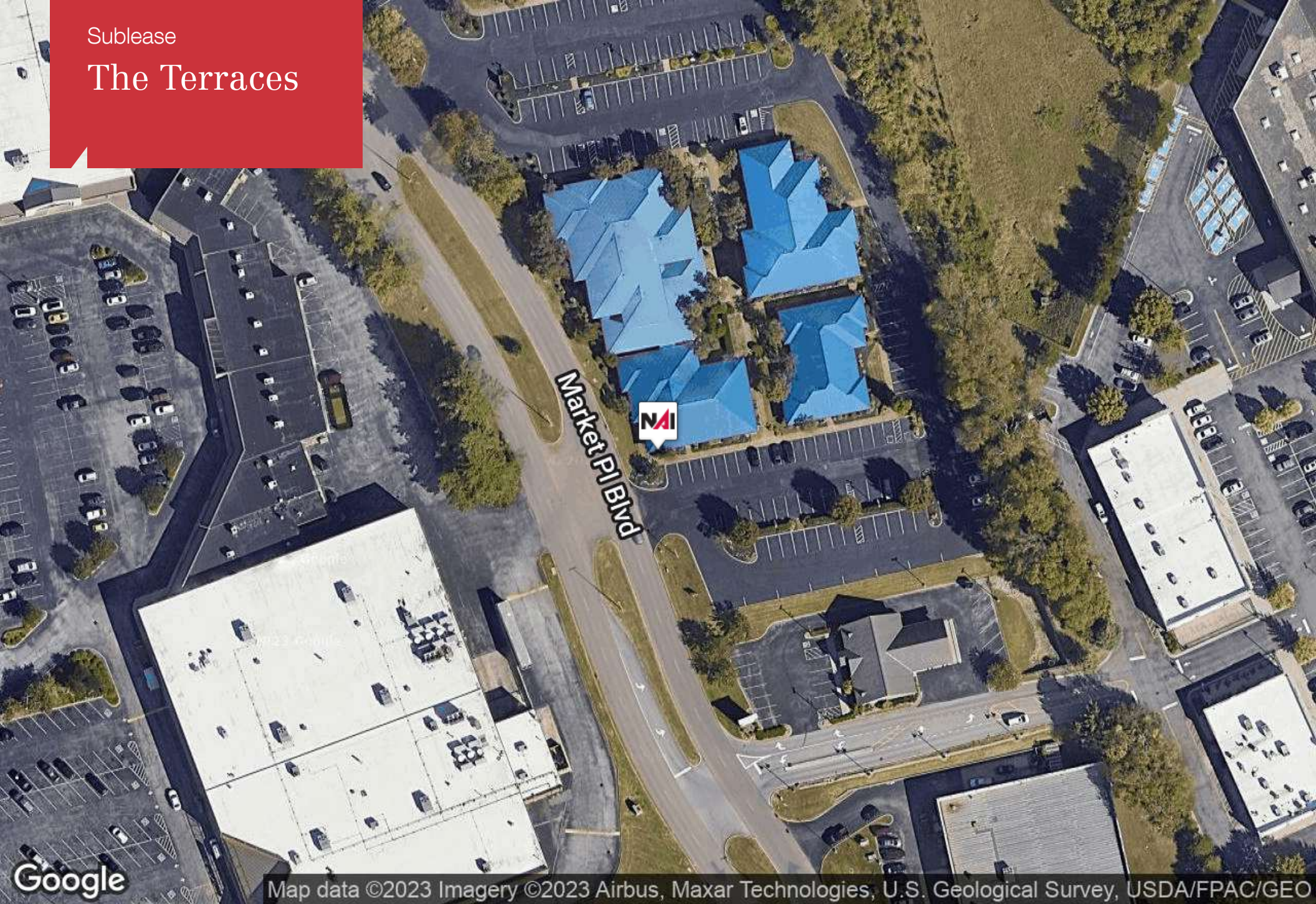
Sublease

Floorplan



Sublease

The Terraces



Google

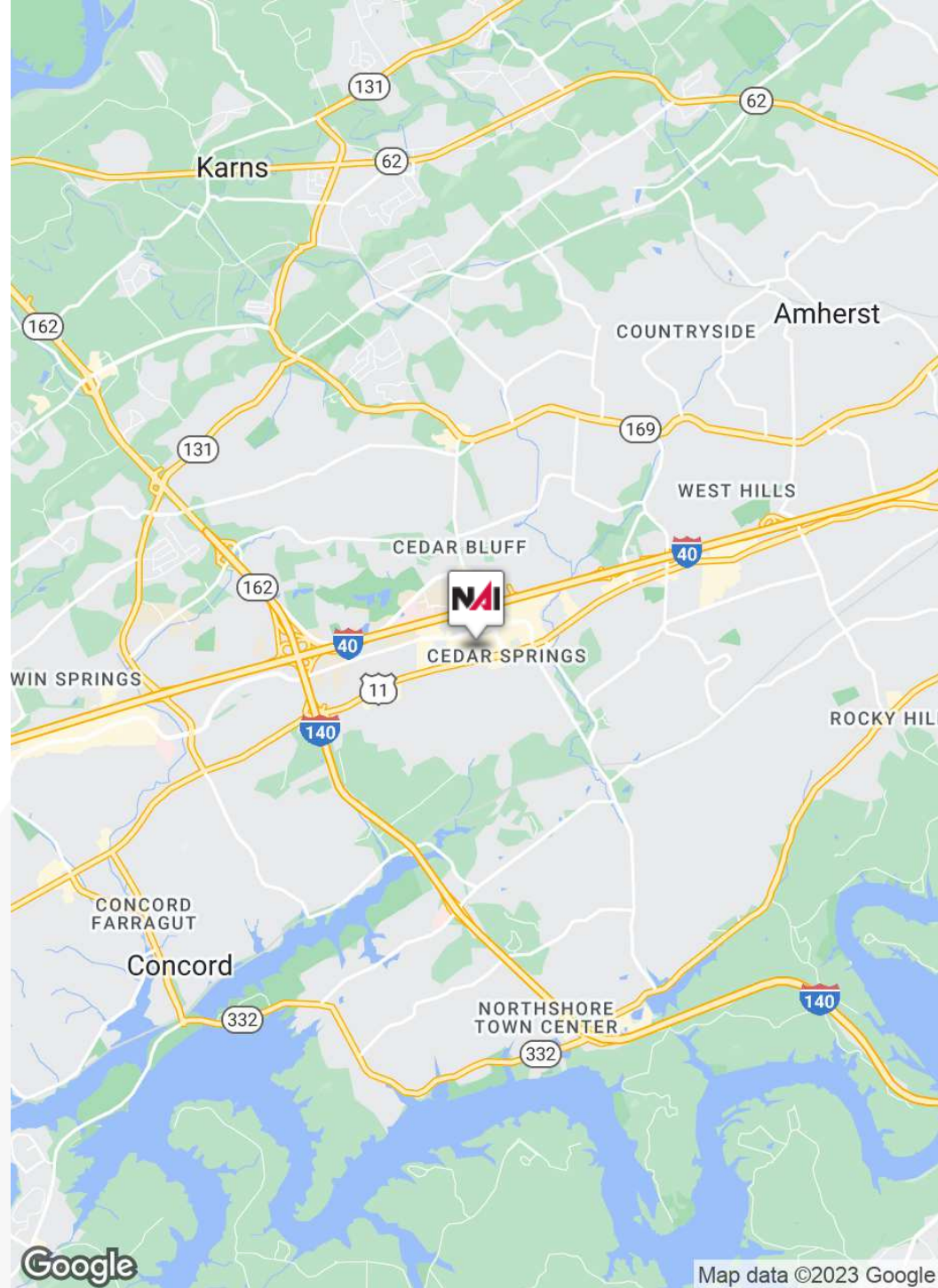
Map data ©2023 Imagery ©2023 Airbus, Maxar Technologies, U.S. Geological Survey, USDA/FPAC/GEO

Sublease

The Terraces



©2023 Google, Imagery ©2023 Airbus, Maxar Technologies, U.S. Geological Survey, USDA/FPAC/GEO



Google

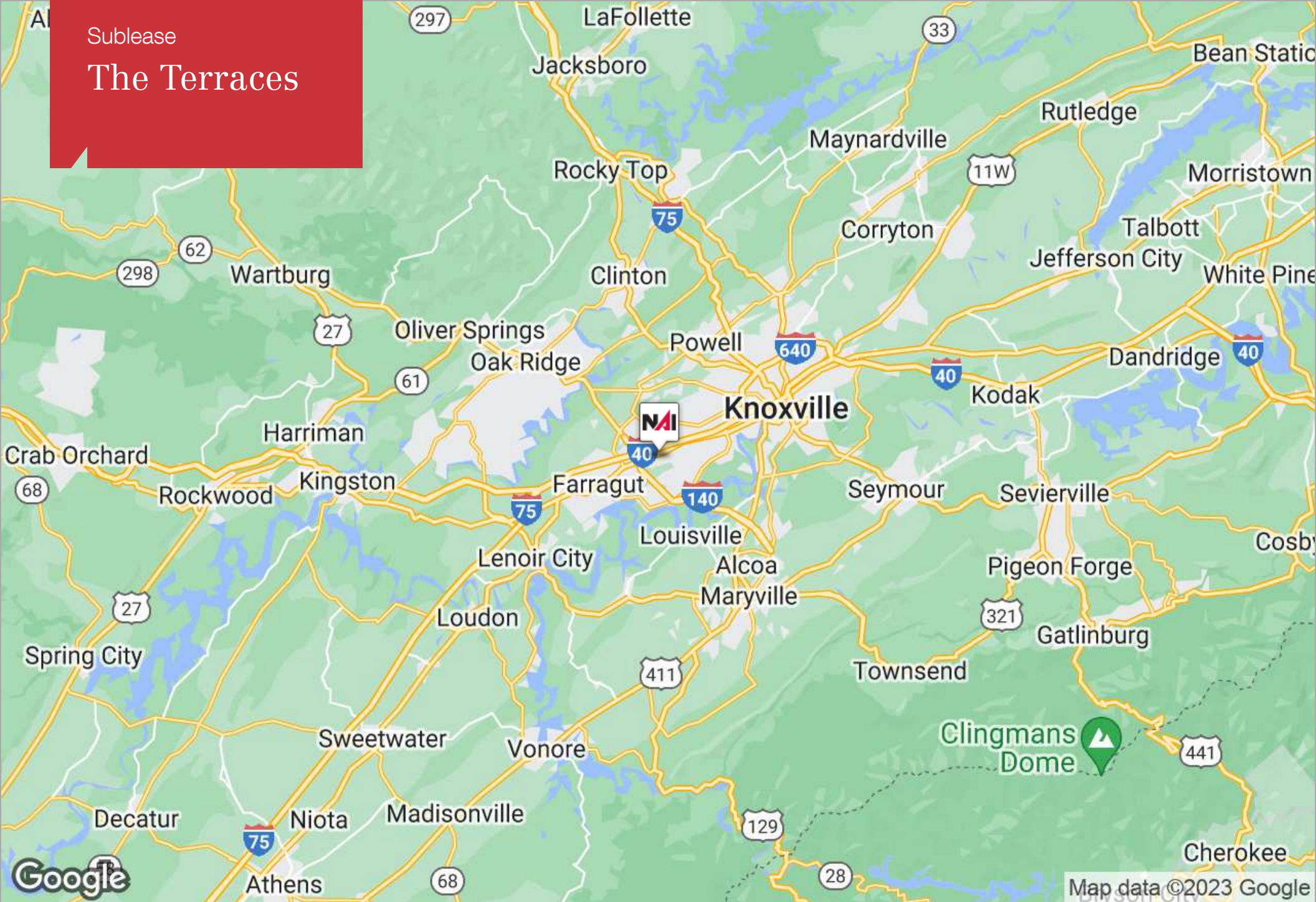
Map data ©2023 Google

255 N Peters Road, Suite 101
Knoxville, TN 37923
865 531 6400 tel
koellamoore.com

in

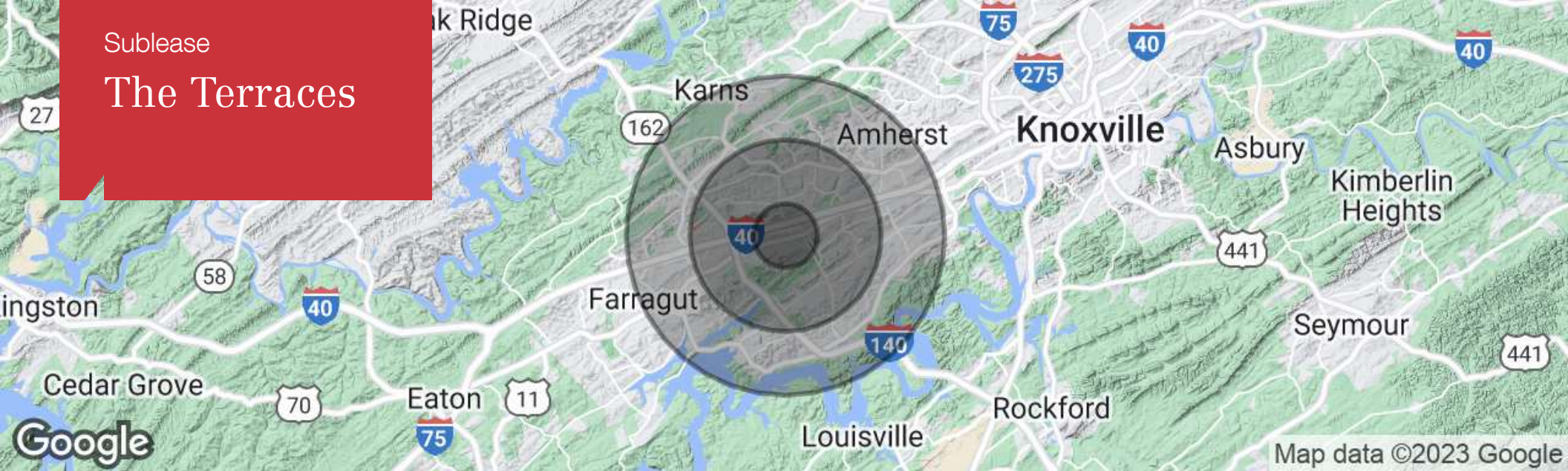
Sublease

The Terraces



Sublease

The Terraces



Population

	1 Mile	3 Miles	5 Miles
Total Population	5,033	51,732	123,908
Median Age	35.3	36.1	36.6
Median Age (Male)	35.3	34.8	35.6
Median Age (Female)	35.4	37.1	37.4

Households & Income

	1 Mile	3 Miles	5 Miles
Total Households	2,191	21,727	51,509
# of Persons Per HH	2.3	2.4	2.4
Average HH Income	\$74,259	\$82,972	\$84,893
Average House Value	\$234,387	\$231,233	\$225,431

Race

	1 Mile	3 Miles	5 Miles
% White	87.4%	88.6%	89.5%
% Black	7.1%	5.9%	5.3%
% Asian	2.4%	3.1%	2.6%
% Hawaiian	1.1%	0.2%	0.1%
% Indian	0.0%	0.1%	0.2%
% Other	0.8%	0.7%	0.6%

Ethnicity

	1 Mile	3 Miles	5 Miles
% Hispanic	7.4%	5.0%	4.4%

* Demographic data derived from 2020 ACS - US Census

Sublease

The Terraces



Michelle Gibbs

Senior Advisor

865.531.6400 tel

fax

mgibbs@koellamoore.com

Professional Background

Michelle R. Gibbs serves as a Senior Advisor for NAI Koella | RM Moore, specializing in the sale and leasing of office and retail property in Knoxville, Tennessee. With over twelve years of industry experience, she brings her hometown charm and knowledge of the surrounding area to the table.

Prior to joining NAI Koella | RM Moore, Michelle worked for a property management company specializing in Knoxville office property. She received her affiliate broker license in 1992 and specialized in office leasing and property management. During this time, she managed and leased more than 1 million square feet of space in the Knoxville, Tellico Village and Cookeville areas of Tennessee, which also included more than 200,000 square feet of retail space.

Throughout her time with R.M. Moore Real Estate, Michelle was consistently recognized for being among the Top 100 Nationwide Sales Leaders of Sperry Van Ness. She also consistently achieved a Diamond Volume Award for exceeding \$5 million in transaction volume per year.

In 2005, Michelle managed the development of Phase II of the Jackson Plaza shopping center located in Cookeville, for a total expansion of 80,000 square feet. She worked with potential tenants, the City of Cookeville, the Chamber of Commerce and contractors in the completion of this project.

Sublease

The Terraces



Roger M. Moore, Jr, SIOR

President

865.531.6400 tel
fax
rogermoore@koellamoore.com

Memberships & Affiliations

Professional Designations:

Society of Industrial and Office Realtor (SIOR)

2018 CCIM Broker of the Year Award

Previously Licensed Real Estate Broker in both Kentucky and North Carolina

Current and Past Affiliations:

Leadership Knoxville

Farragut and West Knoxville Rotary

Knoxville Chamber of Commerce - Past Board Member

Harmony Adoptions - Past Board Member

Foster Care - Past Board Member

Concord Sertoma - Past President

The Young Entrepreneurs Organization

Boy Scouts of America

American Red Cross - Past Board Member

Education

University of Tennessee

Professional Background

Roger Moore, Jr. is a Principal Broker and serves as President of NAI Koella | RM Moore. With more than 25 years as a real estate agent and broker, Moore has amassed an impressive amount of experience in the sales and leasing of commercial properties.

Roger began his career in the industry in 1980 selling real estate for his father, who, at the time, had the largest real estate company in the state of Tennessee. In 1995, following in his father's footsteps, Roger carried on a family tradition when he opened R.M. Moore Real Estate Company as a full-service firm and focused solely on commercial real estate. R.M. Moore Real Estate was named on the INC 5000 list of the fastest growing companies in 2007 and 2008 and in February of 2007 was recognized in the Top 101 in Commercial Real Estate by Business TN Magazine. Roger was also affiliated with Sperry Van Ness (SVN), where his transactions consistently ranked him in the Top 20 of SVN Advisors and in the SVN Partner's Circle for achieving highest total volumes amongst 900+ Advisors. In 2017, Roger combined business with that of Maribel Koella of NAI Knoxville to form the largest commercial real estate group in East Tennessee, now known as NAI Koella | RM Moore.

Roger takes a very active role in the everyday functioning of the company. Not only does he assist in managing the firm and its many employees, but he also specializes in providing commercial property, tenant acquisition, and property management services through offices in both Knoxville and Sevierville, Tennessee.