



9050 Executive Park Drive, Suite C-100

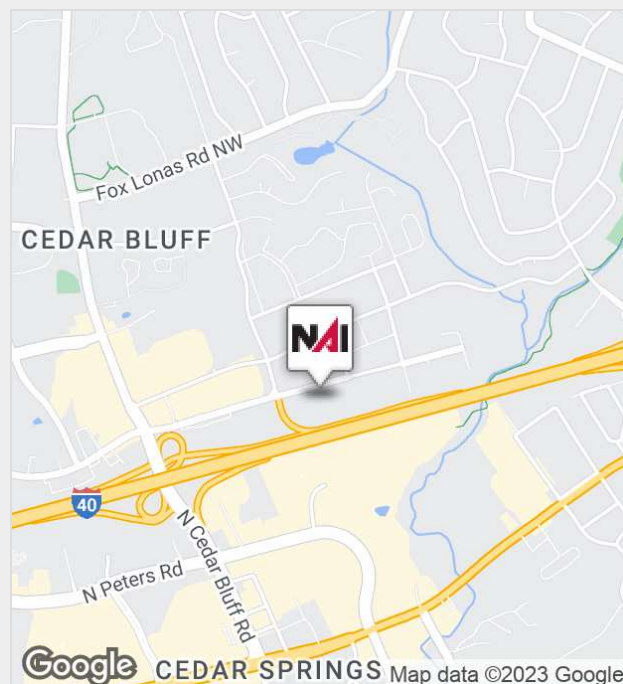
Knoxville, Tennessee 37923

Property Features

- Clean and well-kept space
- Quick access to Cedar Bluff and I-40
- Park at the door
- Well developed area

Lease Rate

Negotiable



For more information:

Michelle Gibbs

+1 865 531 6400 • mgibbs@koellamoore.com

For Lease

Financial Plaza Sublease



Property Summary

Available SF:

Lease Rate:

Negotiable

Building Size:

4,224 SF

Building Class:

B

Market:

Knox

Property Overview

4,224 SF of class B office space is available for sublease in the Financial Plaza building. The suite offers several office size options along with a conference room, kitchen and access to courtyard. Well maintained space with plenty of natural light.

Sublease through 2-28-21

Location Overview

Financial Plaza is located in the Cedar Bluff area of West Knoxville. There are a number of amenities in the area including retail, restaurants, day-care, banking, etc. The property is in close proximity to Cedar Bluff Road, Kingston Pike and Interstate 40.

For Lease

Financial Plaza Sublease



For Lease

Financial Plaza Sublease



For Lease

Financial Plaza Sublease



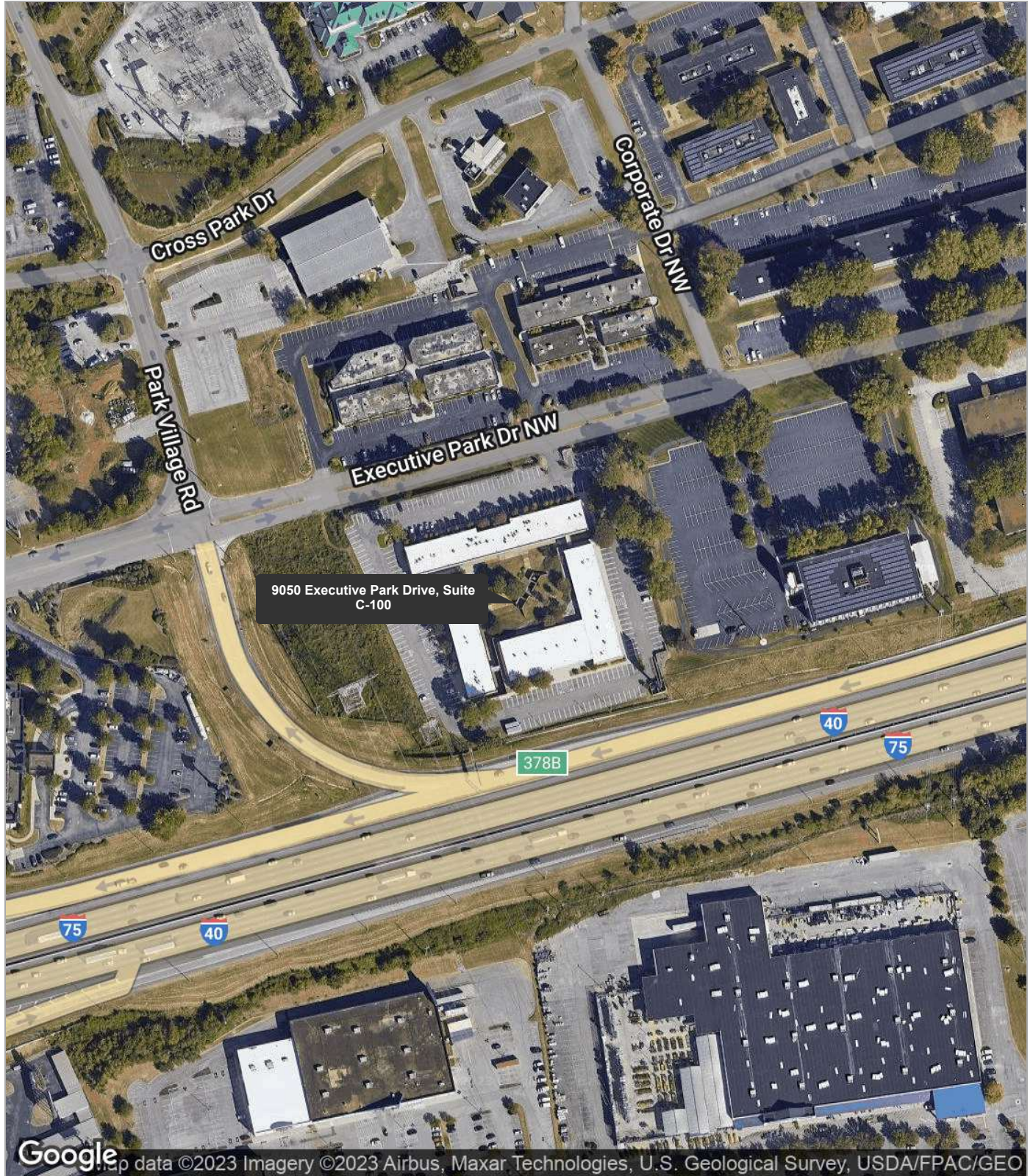
For Lease

Financial Plaza Sublease



For Lease

Financial Plaza Sublease

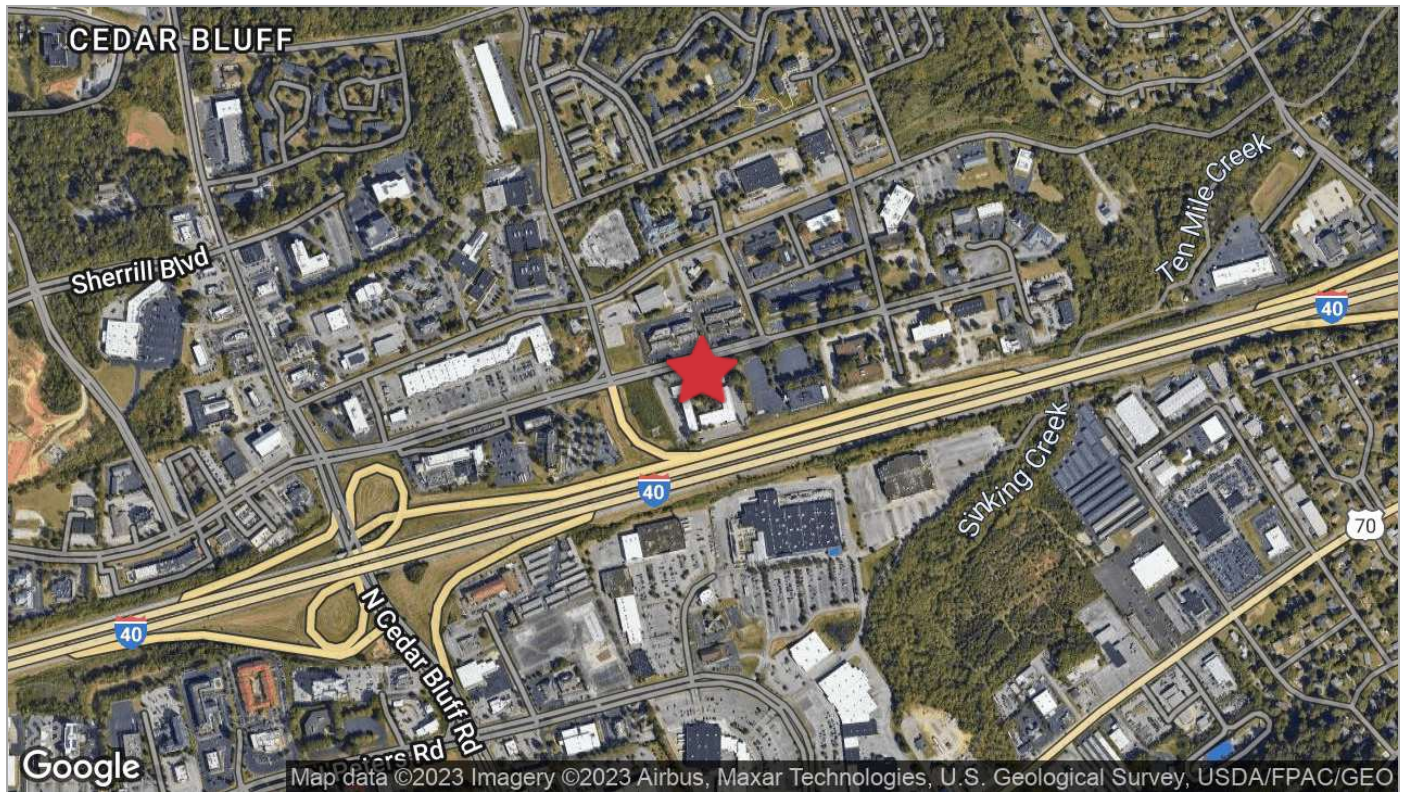


Financial Plaza Sublease



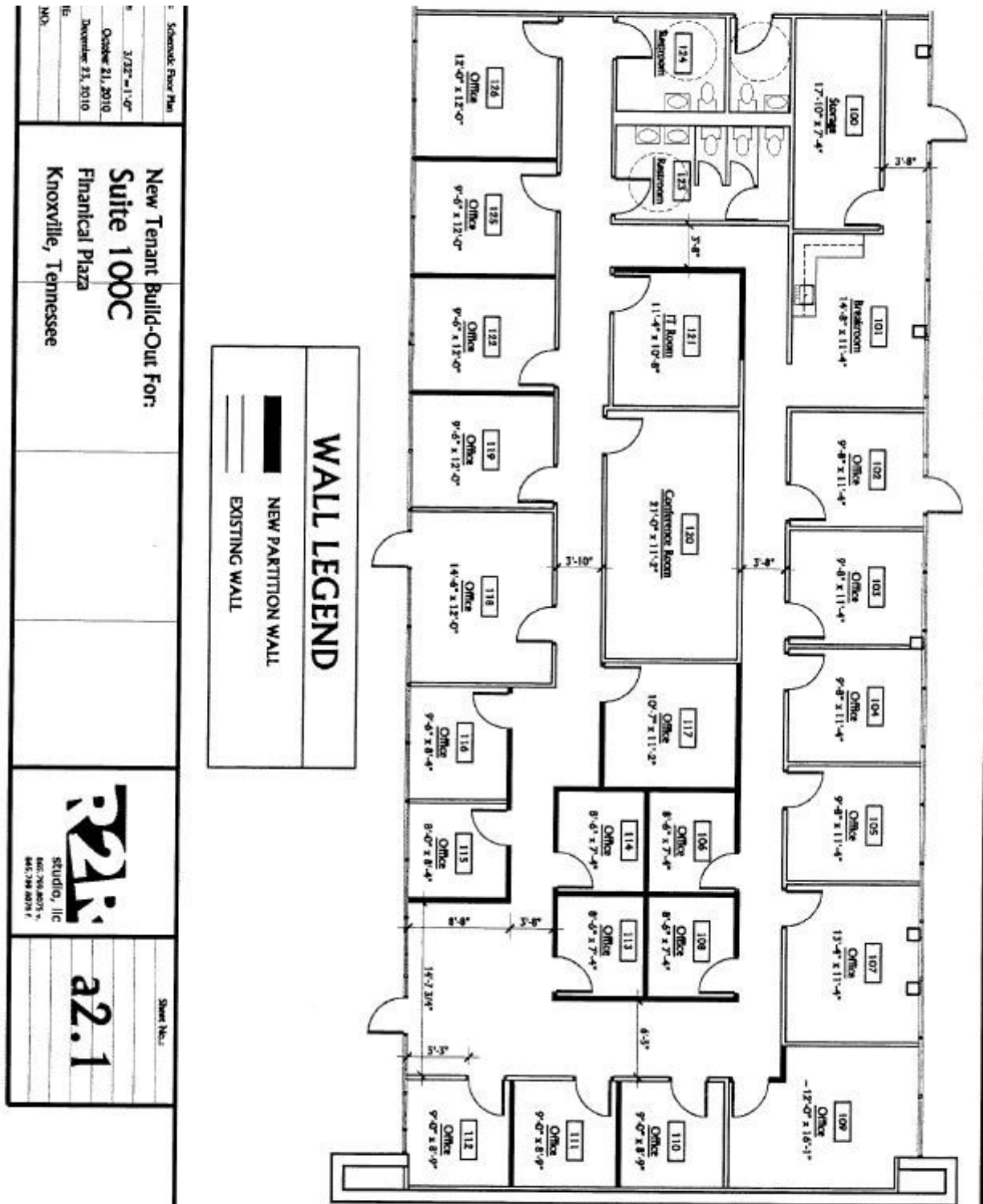
For Lease

Financial Plaza Sublease



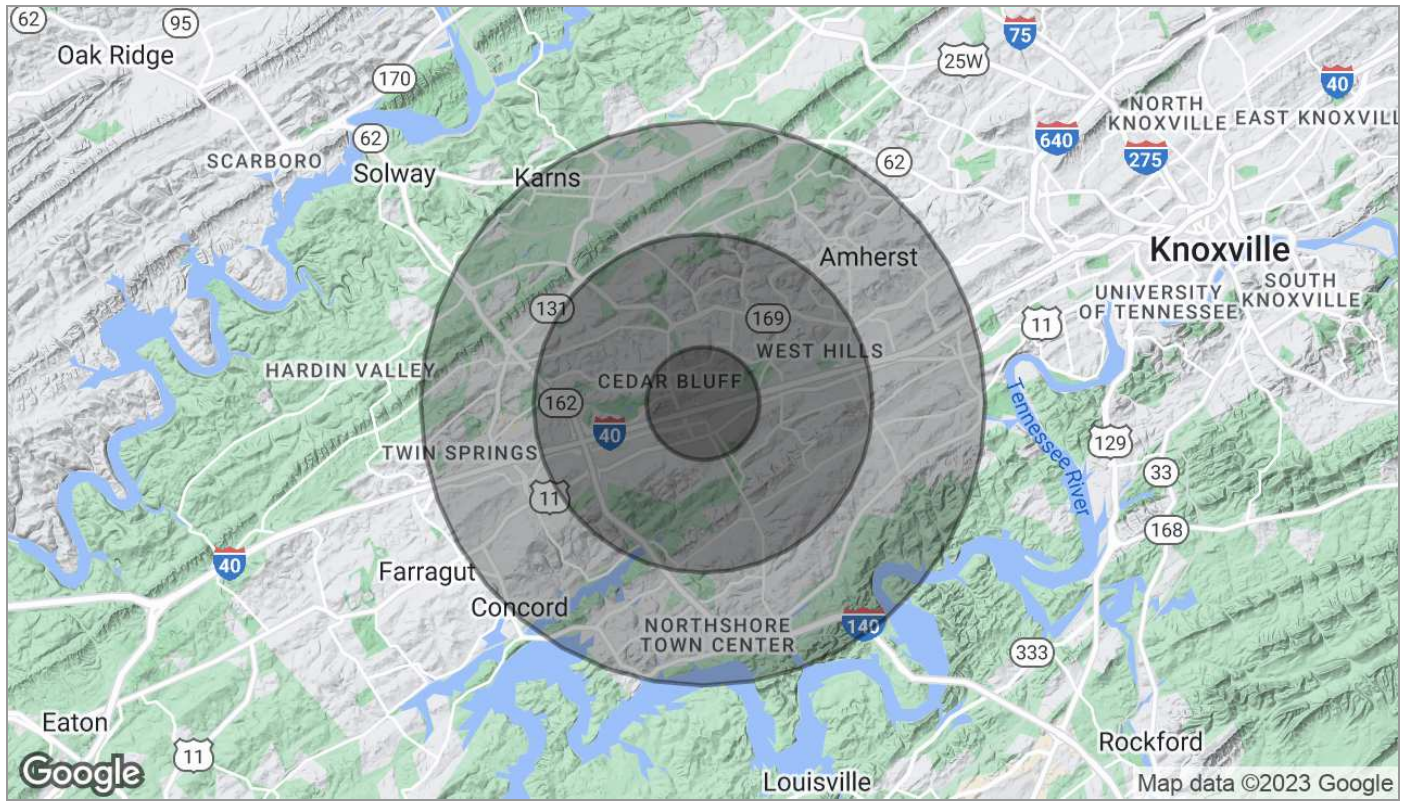
For Lease

Financial Plaza Sublease



For Lease

Financial Plaza Sublease



Population	1 Mile	3 Miles	5 Miles
TOTAL POPULATION	7,943	55,581	129,674
MEDIAN AGE	33.0	35.8	36.3
MEDIAN AGE (MALE)	30.3	34.4	35.5
MEDIAN AGE (FEMALE)	34.5	37.4	37.2
Households & Income	1 Mile	3 Miles	5 Miles
TOTAL HOUSEHOLDS	3,711	24,073	54,151
# OF PERSONS PER HH	2.1	2.3	2.4
AVERAGE HH INCOME	\$59,259	\$77,729	\$83,518
AVERAGE HOUSE VALUE	\$195,974	\$211,110	\$221,555

* Demographic data derived from 2020 ACS - US Census

Agent Profile



Michelle Gibbs

Senior Advisor
NAI Koella | RM Moore
o +1 865 531 6400
c +1 865 228 4264
mgibbs@koellamoore.com

Professional Background

Michelle R. Gibbs serves as a Senior Advisor for NAI Koella | RM Moore, specializing in the sale and leasing of office and retail property in Knoxville, Tennessee. With over twelve years of industry experience, she brings her hometown charm and knowledge of the surrounding area to the table.

Prior to joining NAI Koella | RM Moore, Michelle worked for a property management company specializing in Knoxville office property. She received her affiliate broker license in 1992 and specialized in office leasing and property management. During this time, she managed and leased more than 1 million square feet of space in the Knoxville, Tellico Village and Cookeville areas of Tennessee, which also included more than 200,000 square feet of retail space.

Throughout her time with R.M. Moore Real Estate, Michelle was consistently recognized for being among the Top 100 Nationwide Sales Leaders of Sperry Van Ness. She also consistently achieved a Diamond Volume Award for exceeding \$5 million in transaction volume per year.

In 2005, Michelle managed the development of Phase II of the Jackson Plaza shopping center located in Cookeville, for a total expansion of 80,000 square feet. She worked with potential tenants, the City of Cookeville, the Chamber of Commerce and contractors in the completion of this project.