

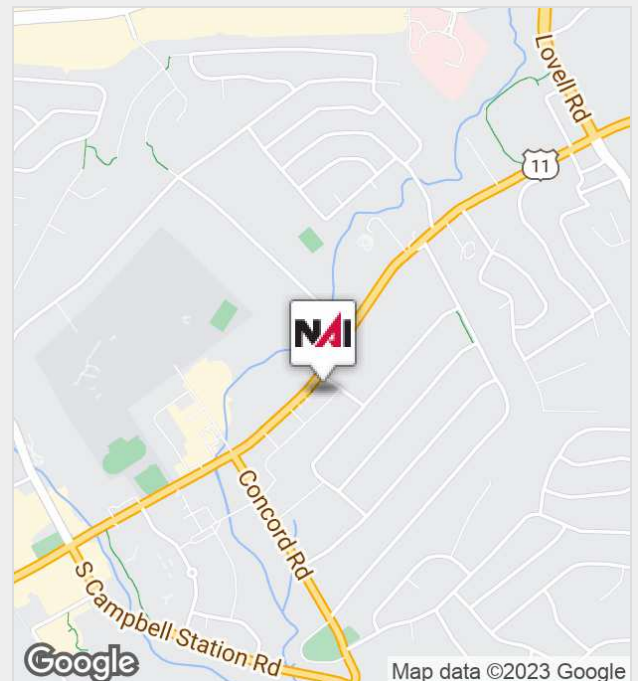


11124 Kingston Pike, Unit 113

Knoxville, Tennessee 37934

Property Features

- 1,741 square feet retail/office space available
- High Traffic Count Location
- Easy Access to Campbell Station, Lovell Road, I-40 and Pellissippi Parkway
- Located nearby banking, restaurants and shopping



Lease Rate

\$18.50 SF/Yr (NNN)

For more information:

Michelle Gibbs

+1 865 531 6400 • mgibbs@koellamoore.com

NO WARRANTY OR REPRESENTATION, EXPRESS OR IMPLIED, IS MADE AS TO THE ACCURACY OF THE INFORMATION CONTAINED HEREIN, AND THE SAME IS SUBMITTED SUBJECT TO ERRORS, OMISSIONS, CHANGE OF PRICE, RENTAL OR OTHER CONDITIONS, PRIOR SALE, LEASE OR FINANCING, OR WITHDRAWAL WITHOUT NOTICE, AND OF ANY SPECIAL LISTING CONDITIONS IMPOSED BY OUR PRINCIPALS NO WARRANTIES OR REPRESENTATIONS ARE MADE AS TO THE CONDITION OF THE PROPERTY OR ANY HAZARDS CONTAINED THEREIN ARE ANY TO BE IMPLIED.

NAI Koella | RM Moore

255 N Peters Road, Suite 101

+1 865 531 6400

www.koellamoore.com

For Lease

ESSEX POINTE RETAIL/OFFICE



Property Summary

Available SF:

Lease Rate:

Negotiable

Unit Size:

1,741 SF

Market:

Knox

Sub Market:

Farragut

Property Overview

1,741 square feet office/retail space located in the Essex Pointe condominium development with excellent visibility to Kingston Pike and easy access to Campbell Station Road, Lovell Road, I-40 and Pellissippi Parkway.

Other Tenants in the center include Jet's Pizza, Shrimp Dock, The Eye Group and The UPS Store.

Location Overview

Essex Point Retail is a strip center located nearby Farragut with excellent visibility and frontage on Kingston Pike. The property offers convenient access to Lovell Road, Campbell Station, I-40 and Pellissippi Parkway. Convenient to restaurants, shopping and banking.

Other Tenants include Jet's Pizza, Shrimp Dock, The Eye Group and The UPS Store.

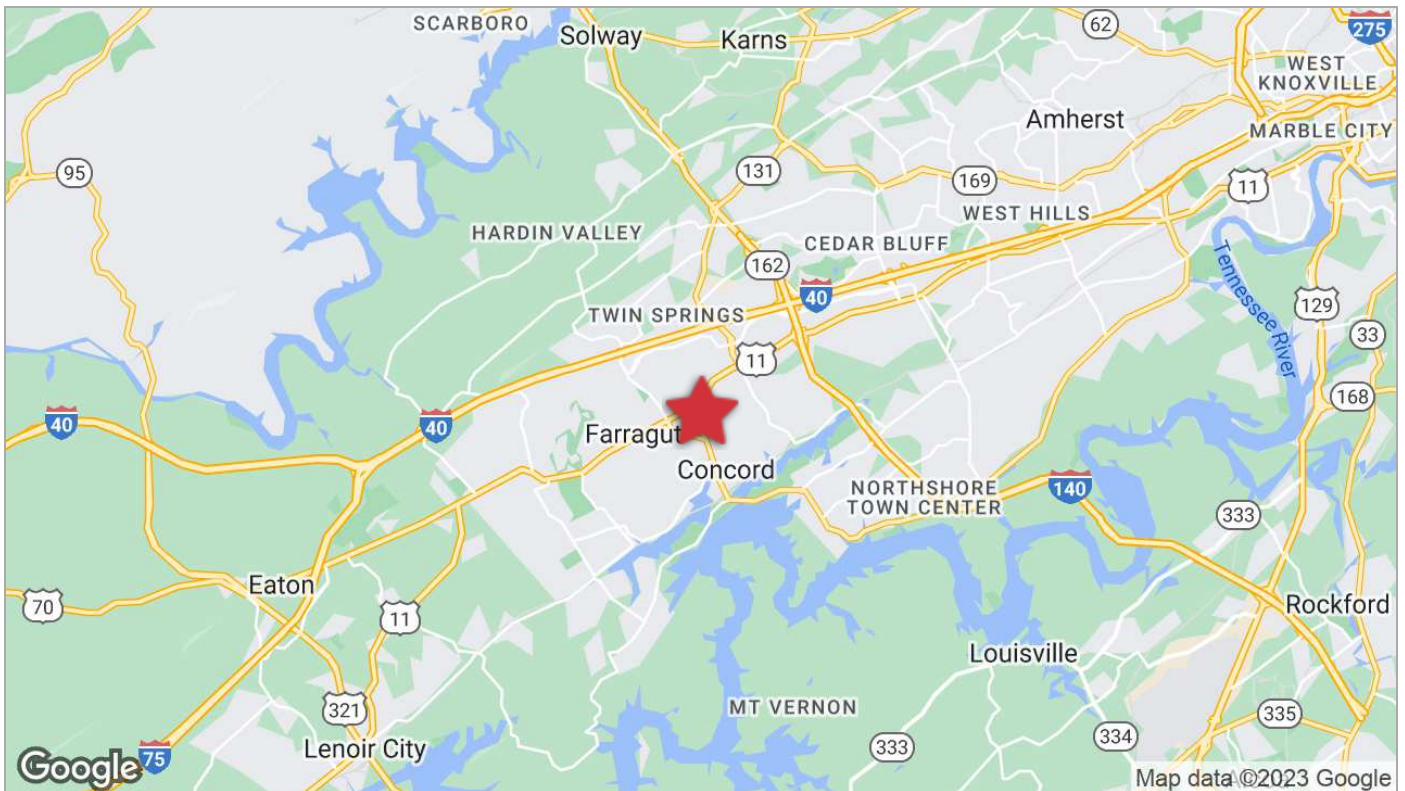
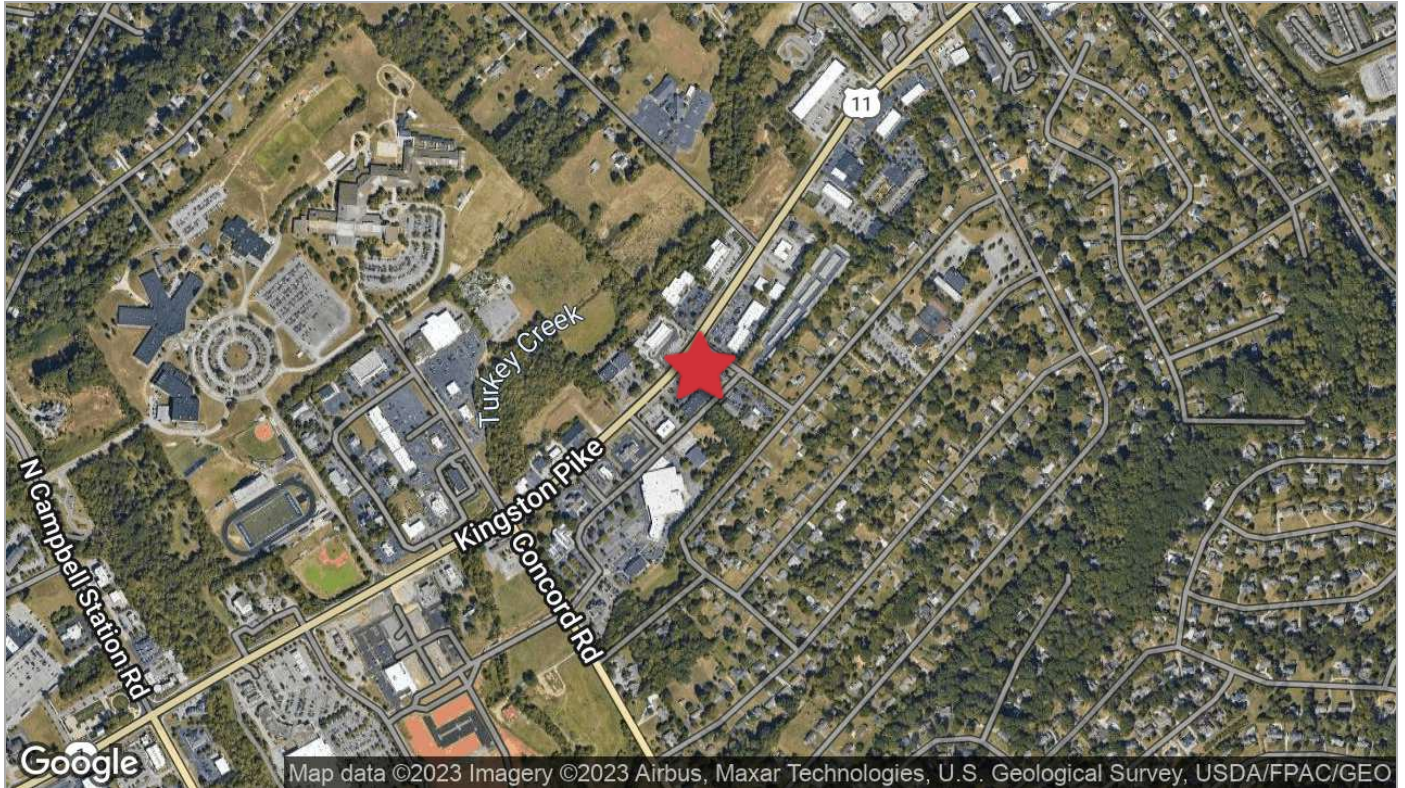
For Lease

ESSEX POINTE RETAIL/OFFICE



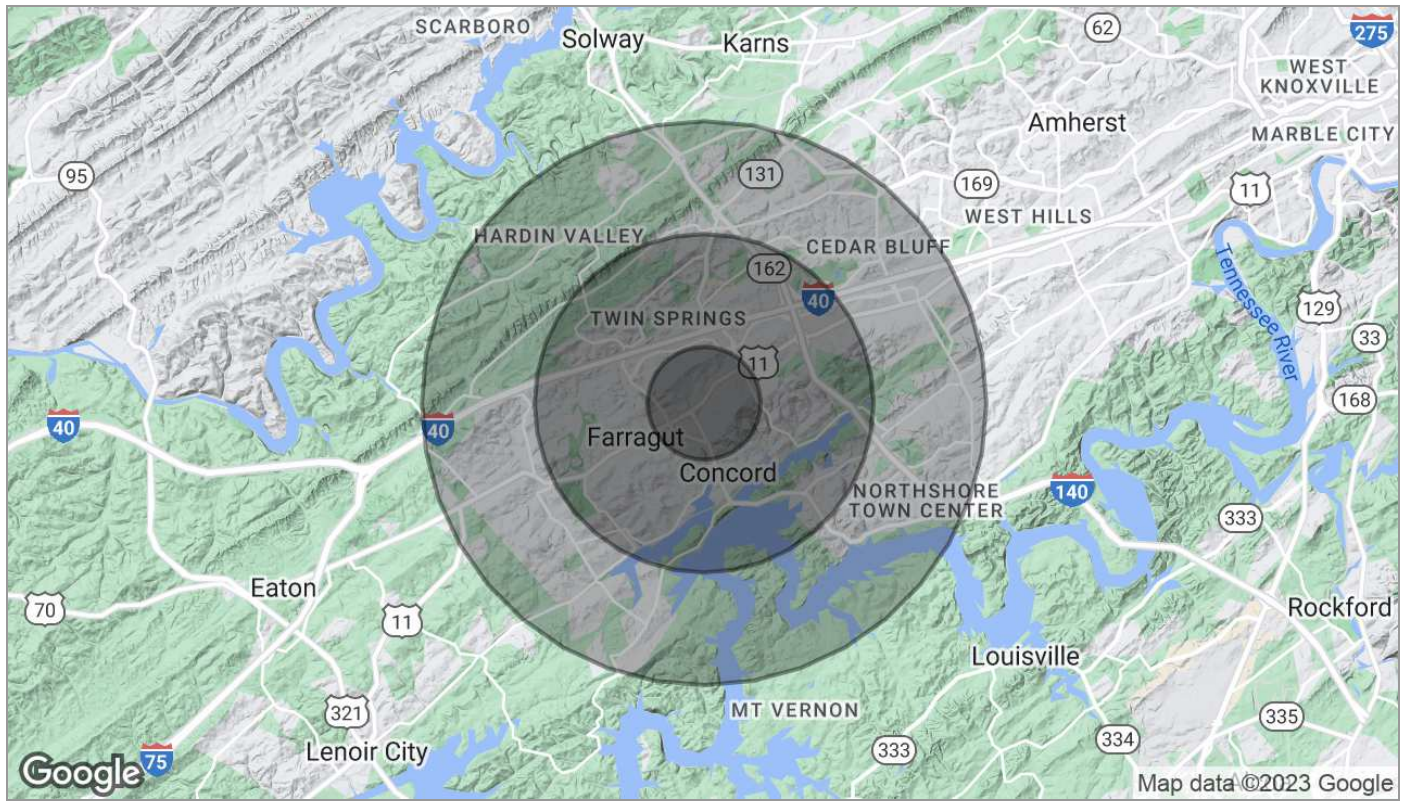
For Lease

ESSEX POINTE RETAIL/OFFICE



For Lease

ESSEX POINTE RETAIL/OFFICE



Population	1 Mile	3 Miles	5 Miles
TOTAL POPULATION	4,475	31,702	74,721
MEDIAN AGE	41.4	42.0	39.9
MEDIAN AGE (MALE)	40.4	41.7	39.2
MEDIAN AGE (FEMALE)	42.1	42.0	40.3
Households & Income	1 Mile	3 Miles	5 Miles
TOTAL HOUSEHOLDS	1,842	12,290	27,985
# OF PERSONS PER HH	2.4	2.6	2.7
AVERAGE HH INCOME	\$84,321	\$98,949	\$102,606
AVERAGE HOUSE VALUE	\$237,263	\$284,969	\$297,395

* Demographic data derived from 2020 ACS - US Census

For Lease

ESSEX POINTE RETAIL/OFFICE

Agent Profile



Michelle Gibbs

Senior Advisor
NAI Koella | RM Moore
o +1 865 531 6400
c +1 865 228 4264
mgibbs@koellamoore.com

Professional Background

Michelle R. Gibbs serves as a Senior Advisor for NAI Koella | RM Moore, specializing in the sale and leasing of office and retail property in Knoxville, Tennessee. With over twelve years of industry experience, she brings her hometown charm and knowledge of the surrounding area to the table.

Prior to joining NAI Koella | RM Moore, Michelle worked for a property management company specializing in Knoxville office property. She received her affiliate broker license in 1992 and specialized in office leasing and property management. During this time, she managed and leased more than 1 million square feet of space in the Knoxville, Tellico Village and Cookeville areas of Tennessee, which also included more than 200,000 square feet of retail space.

Throughout her time with R.M. Moore Real Estate, Michelle was consistently recognized for being among the Top 100 Nationwide Sales Leaders of Sperry Van Ness. She also consistently achieved a Diamond Volume Award for exceeding \$5 million in transaction volume per year.

In 2005, Michelle managed the development of Phase II of the Jackson Plaza shopping center located in Cookeville, for a total expansion of 80,000 square feet. She worked with potential tenants, the City of Cookeville, the Chamber of Commerce and contractors in the completion of this project.