

Virginia Pines Way

2.18 Acres



10706 Virginia Pines Way

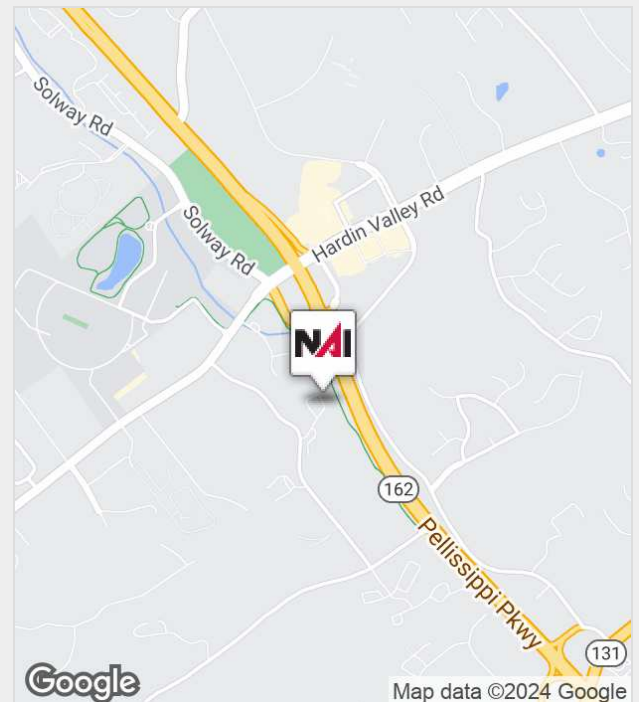
Knoxville, Tennessee 37932

Property Features

- Your Business can be in the prestigious Vista Del Monte Business Park!
- Excellent visibility from the Pellissippi Parkway.
- Located in the fast growing Hardin Valley market.
- 2.18 Acres
- Existing land use- Office

Sale Price

Reduced To \$245,000



For more information:

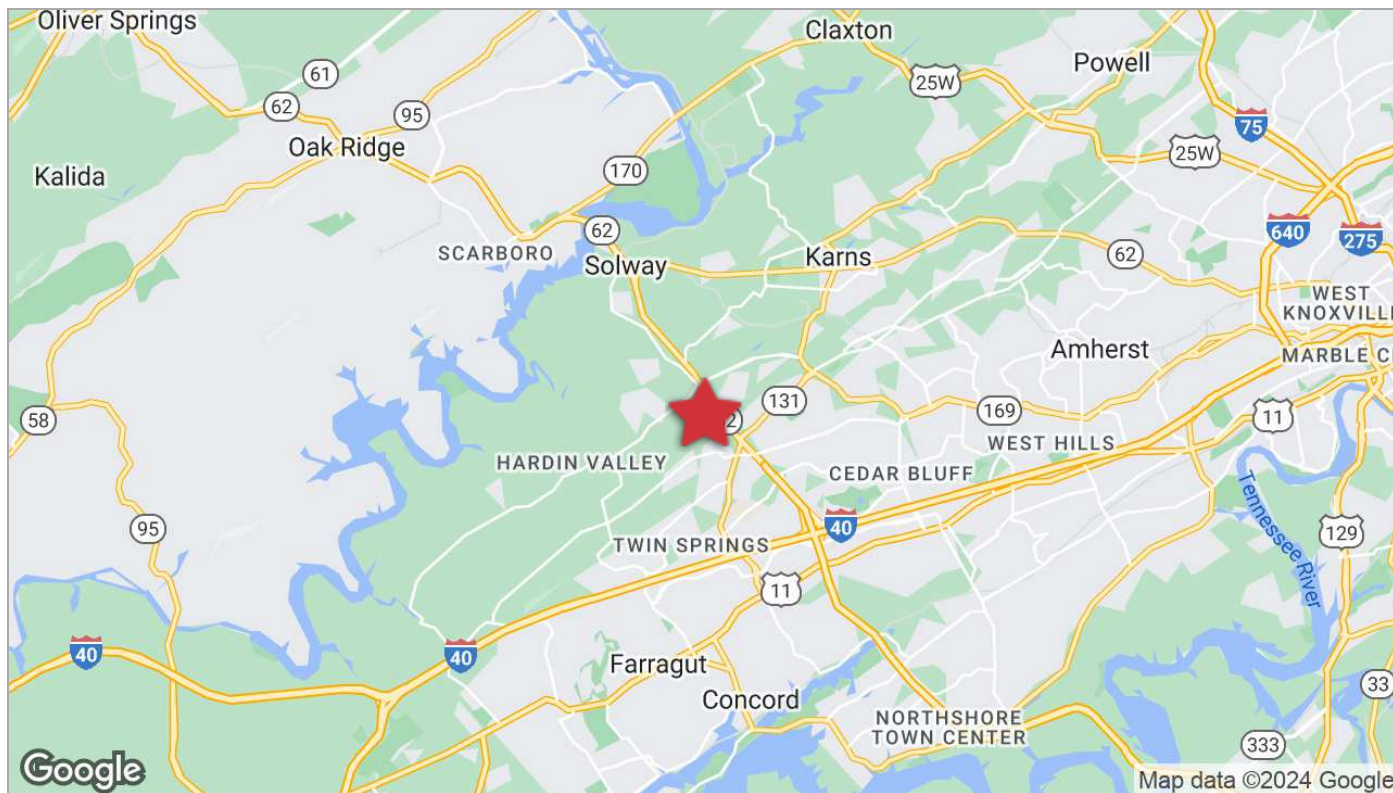
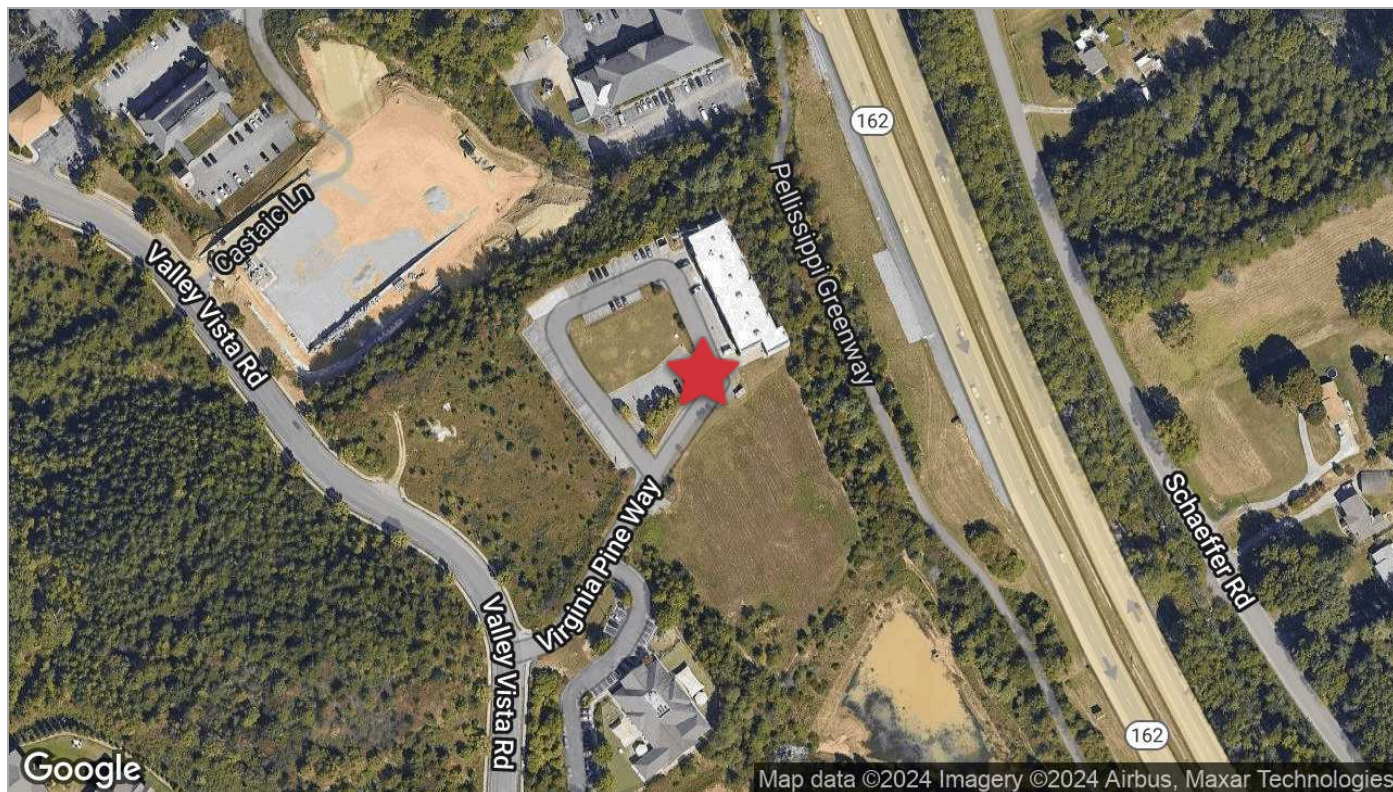
Matt Fentress, RPA, CPM, CCIM, SIOR
+1 865 777 3037 • mfentress@koellamoore.com

NO WARRANTY OR REPRESENTATION, EXPRESS OR IMPLIED, IS MADE AS TO THE ACCURACY OF THE INFORMATION CONTAINED HEREIN, AND THE SAME IS SUBMITTED SUBJECT TO ERRORS, OMISSIONS, CHANGE OF PRICE, RENTAL OR OTHER CONDITIONS, PRIOR SALE, LEASE OR FINANCING, WITHDRAWAL WITHOUT NOTICE, OR ANY SPECIAL LISTING CONDITIONS IMPOSED BY OUR PRINCIPALS. NO WARRANTIES OR REPRESENTATIONS ARE MADE AS TO THE CONDITION OF THE PROPERTY OR ANY HAZARDS CONTAINED THEREIN. UNLESS THERE IS AN AGREEMENT STIPULATING OTHERWISE, THE AFFILIATE BROKERS OR BROKERS NAMED WITHIN REPRESENT THE OWNER OR LANDLORD.

NAI Koella | RM Moore
255 N Peters Road, Suite 101
+1 865 531 6400
www.koellamoore.com

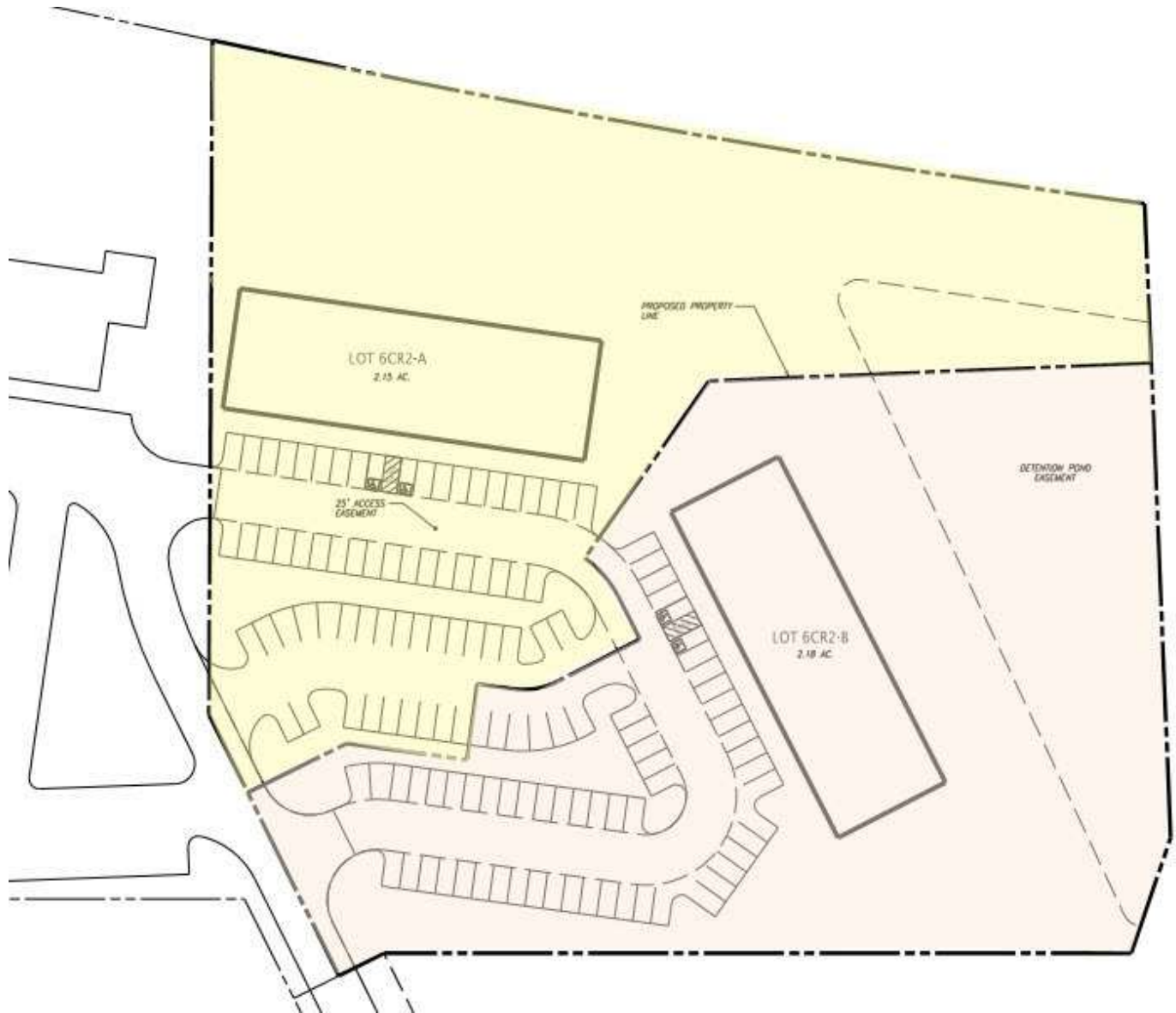
For Sale

10706 Virginia Pines Way



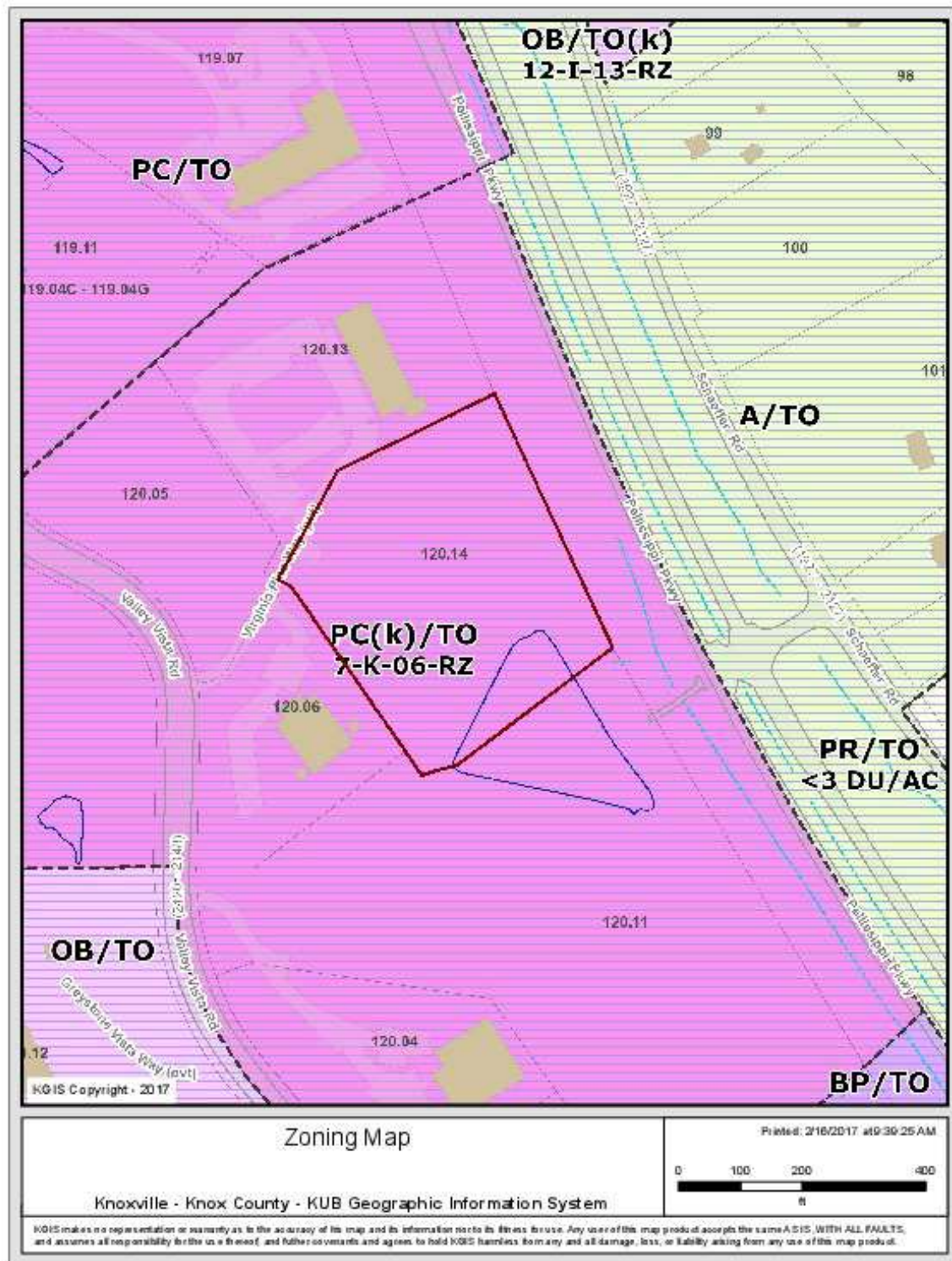
For Sale

Proposed Site Division



For Sale

10706 Virginia Pines Way



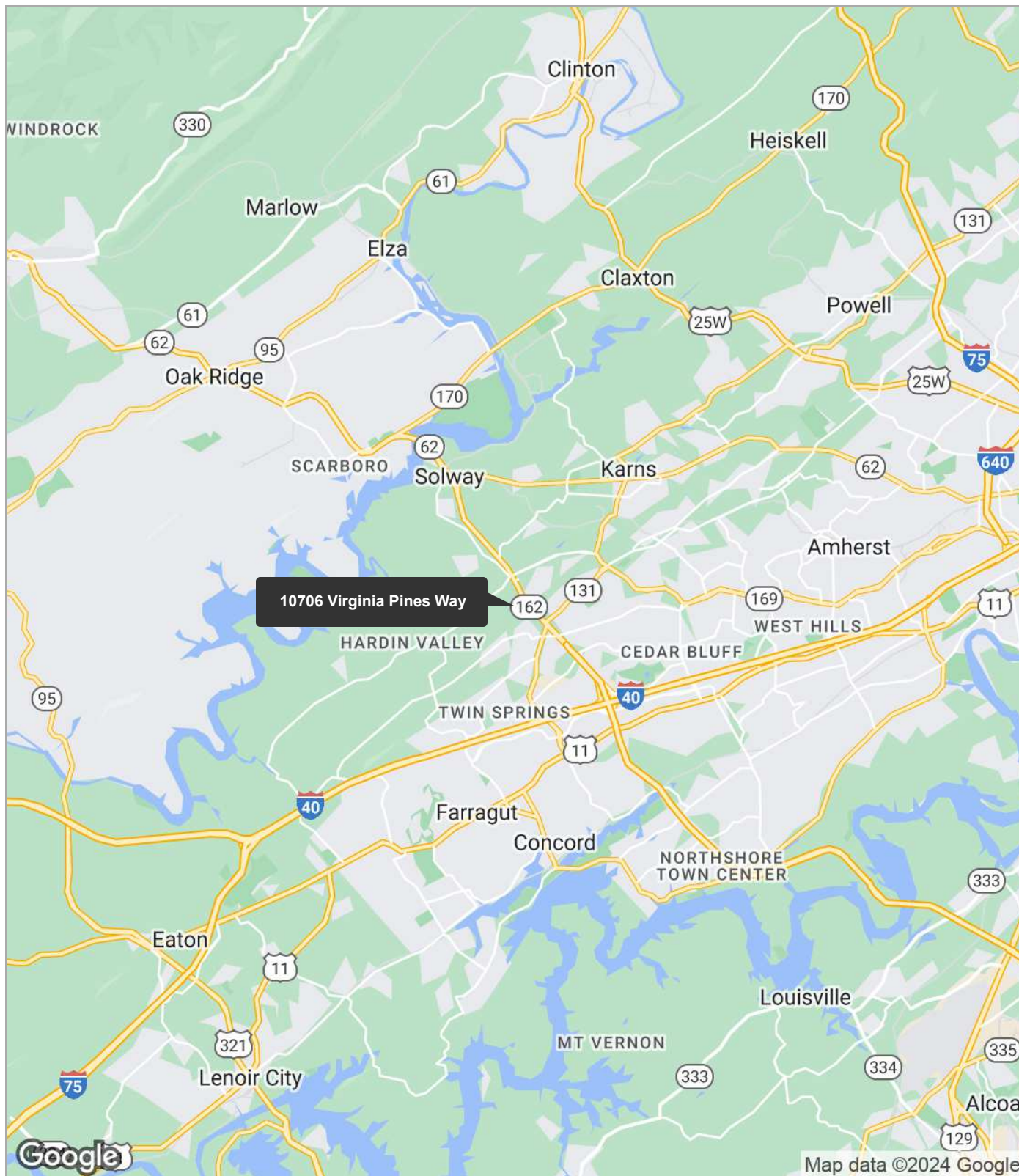
For Sale

10706 Virginia Pines Way



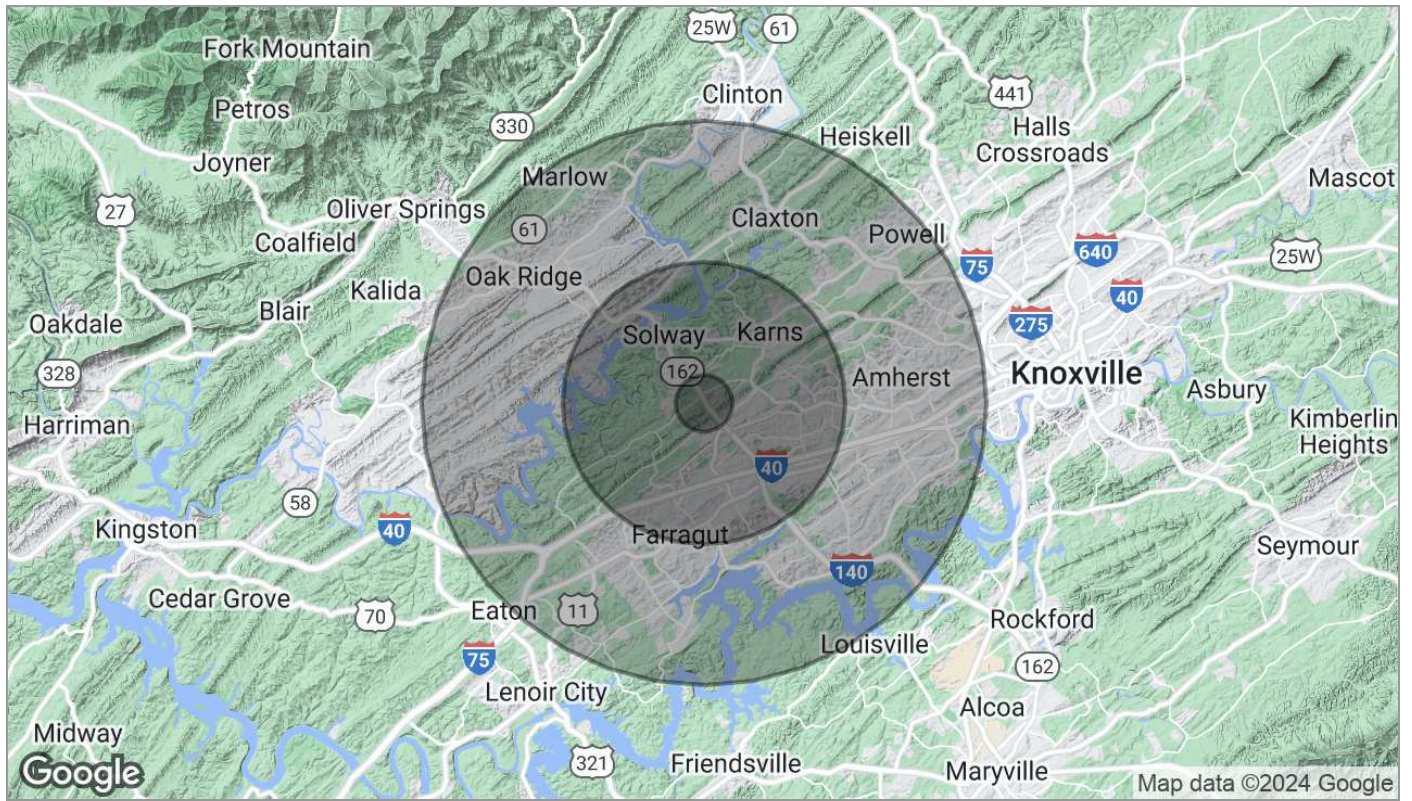
For Sale

10706 Virginia Pines Way



For Sale

10706 Virginia Pines Way



Population	1 Mile	5 Miles	10 Miles
TOTAL POPULATION	1,829	61,546	247,886
MEDIAN AGE	38.9	40.5	38.8
MEDIAN AGE (MALE)	35.7	39.6	37.8
MEDIAN AGE (FEMALE)	40.5	41.1	39.9
Households & Income	1 Mile	5 Miles	10 Miles
TOTAL HOUSEHOLDS	724	24,531	100,754
# OF PERSONS PER HH	2.5	2.5	2.5
AVERAGE HH INCOME	\$76,355	\$85,496	\$82,700
AVERAGE HOUSE VALUE	\$258,830	\$222,062	\$248,786

* Demographic data derived from 2020 ACS - US Census