

Homberg Theater

8,100 SF Available

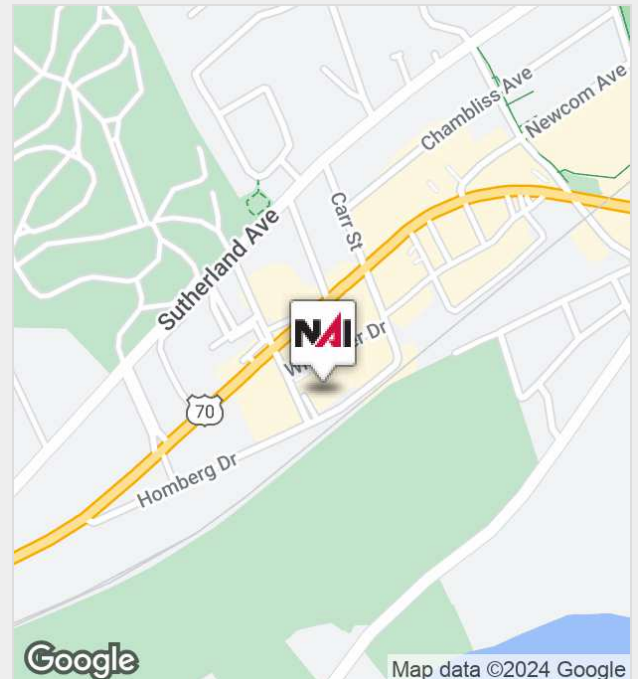


315 Mohican St.

Knoxville, Tennessee 37919

Property Features

- Retail/restaurant/special event space in the Heart of Bearden
- Large monument signage on Kingston Pike available
- Convenient Access to Kingston Pike



For more information:

Catherine Hodges

+1 865 862 6413 • chodges@koellamoore.com

NO WARRANTY OR REPRESENTATION, EXPRESS OR IMPLIED, IS MADE AS TO THE ACCURACY OF THE INFORMATION CONTAINED HEREIN, AND THE SAME IS SUBMITTED SUBJECT TO ERRORS, OMISSIONS, CHANGE OF PRICE, RENTAL OR OTHER CONDITIONS, PRIOR SALE, LEASE OR FINANCING, OR WITHDRAWAL WITHOUT NOTICE, AND OF ANY SPECIAL LISTING CONDITIONS IMPOSED BY OUR PRINCIPALS NO WARRANTIES OR REPRESENTATIONS ARE MADE AS TO THE CONDITION OF THE PROPERTY OR ANY HAZARDS CONTAINED THEREIN ARE ANY TO BE IMPLIED.

NAI Koella | RM Moore
255 N Peters Road, Suite 101
+1 865 531 6400
www.koellamoore.com

For Lease

Homberg Place Retail

Property Summary

Available SF:	8,100
Lease Rate:	9.00 SF/YR (NNN)
Total Building Size:	13,830 SF
Year Built:	1978
Zoning:	commercial
Market:	Knoxville
Sub Market:	Bearden
Cross Street:	Homberg Drive

Property Overview

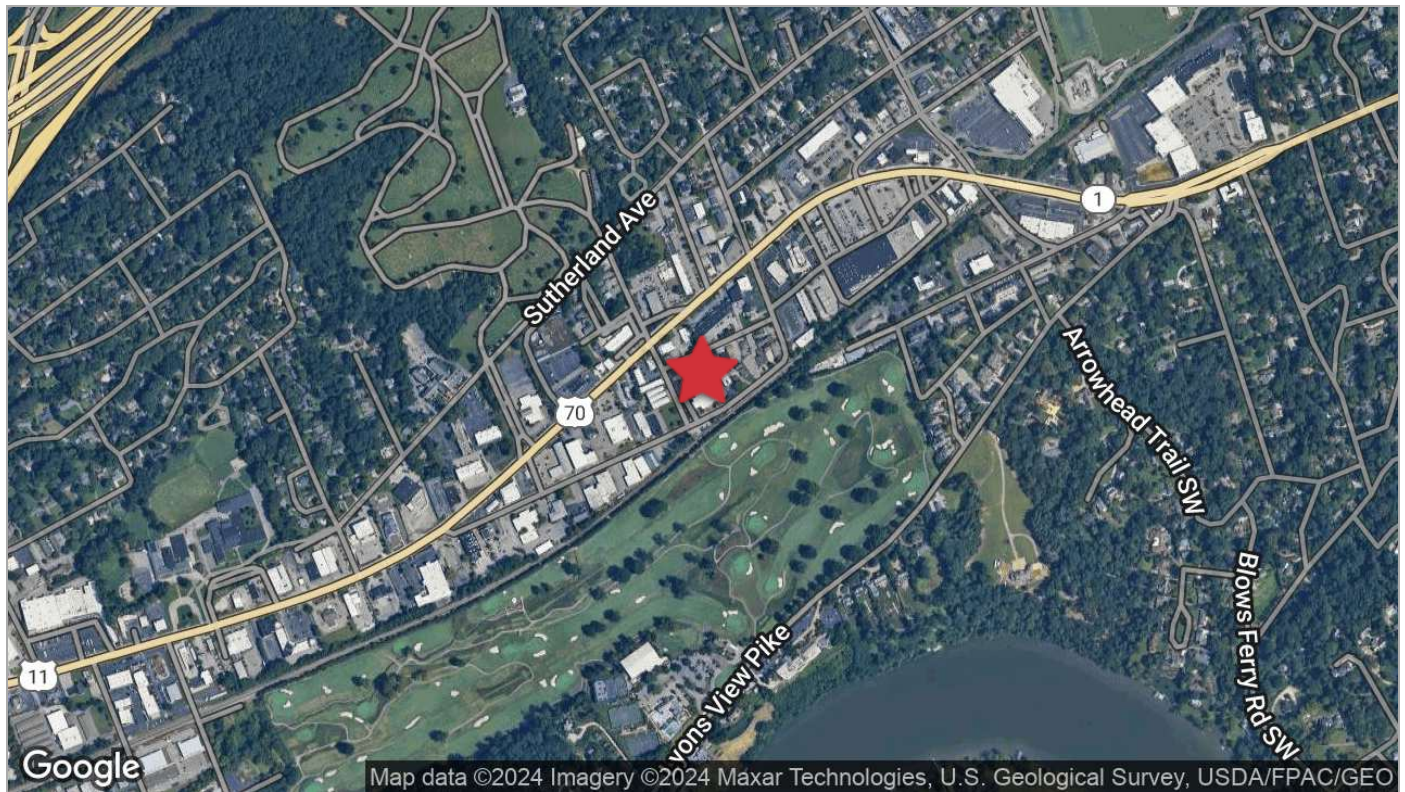
The historic Homberg Theater is located in the heart of Bearden with large monument signage available directly on Kingston Pike. This well-manicured and highly recognizable property is ideal for retail, office, or restaurant concepts. Professionally managed by NAI Koella/ R.M. Moore.

Location Overview

This space is located on Homberg Drive in Knoxville's Bearden District. Retailers and restaurants within the vicinity include Shuck Raw bar, Nama Sushi, Willies Butcher Shop, Shiva Skin Studio, Simon Hall Private Chef, Salon Azure, Michael Peters Home, Hairpeace, Annie's Alterations and many others.

For Lease

Homberg Office/Retail/Event Available



For Lease

Homberg Place Retail

Agent Profile



Catherine Hodges

Advisor

NAI Koella | RM Moore

o +1 865 862 6413

c +1 865 804 1985

chodges@koellamoore.com

Professional Background

Catherine Hodges is a Commercial Real Estate Advisor with NAI Koella | RM Moore. She specializes in office and retail leasing, and in land sales. She has a proven tract record in Landlord representation by bringing several developments to full occupancy. As a Knoxville native, she believes in contributing to the community by helping business owners secure the best location possible and values the close relationships made through her brokerage efforts.

Memberships & Affiliations

Catherine is a member of the International Council of Shopping Centers (ICSC) and has completed courses from the Certified Commercial Investment Member (CCIM) Institute. She is a member of the Girls Cotillion and the East Tennessee Presentation Society.

In her free time, she enjoys the natural beauty of East Tennessee though hiking, mountain biking, and kayaking. She is active in fundraising charities such as THRIVE Youth Ministries, Big Brothers/ Big Sisters, the American Heart Association, and Cathy L. Hodges memorial fund.

NAI Global 2017 Retail Power Broker Award

CoStar 2017 Retail Power Broker Award

Education

Catherine attended Knoxville's West High School and went on to obtain her bachelor's degree from the University of Tennessee in Finance with a minor in International Business.