



# 9729 Cogdill Road

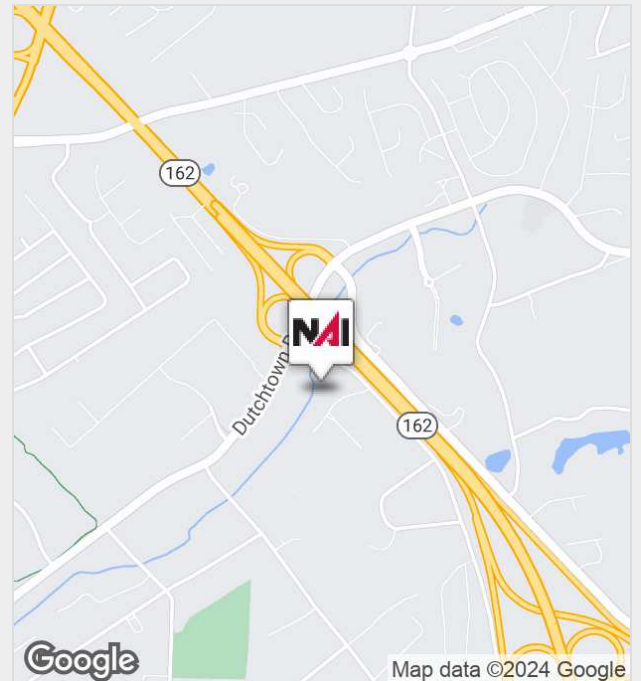
Knoxville, Tennessee 37932

## Property Features

- Full Service Lease
- Class A top of the line finishes
- Executive quality office space.
- Located in the Pellissippi Pointe Office Park.
- Suite available June 1, 2017

Lease Rate

**\$19.50 SF/Yr**



For more information:

**Matt Fentress, RPA, CPM, CCIM, SIOR**  
+1 865 777 3037 • [mfentress@koellamoore.com](mailto:mfentress@koellamoore.com)

NO WARRANTY OR REPRESENTATION, EXPRESS OR IMPLIED, IS MADE AS TO THE ACCURACY OF THE INFORMATION CONTAINED HEREIN, AND THE SAME IS SUBMITTED SUBJECT TO ERRORS, OMISSIONS, CHANGE OF PRICE, RENTAL OR OTHER CONDITIONS, PRIOR SALE, LEASE OR FINANCING, OR WITHDRAWAL WITHOUT NOTICE, AND OF ANY SPECIAL LISTING CONDITIONS IMPOSED BY OUR PRINCIPALS NO WARRANTIES OR REPRESENTATIONS ARE MADE AS TO THE CONDITION OF THE PROPERTY OR ANY HAZARDS CONTAINED THEREIN ARE ANY TO BE IMPLIED.

NAI Koella | RM Moore  
255 N Peters Road, Suite 101  
+1 865 531 6400  
[www.koellamoore.com](http://www.koellamoore.com)

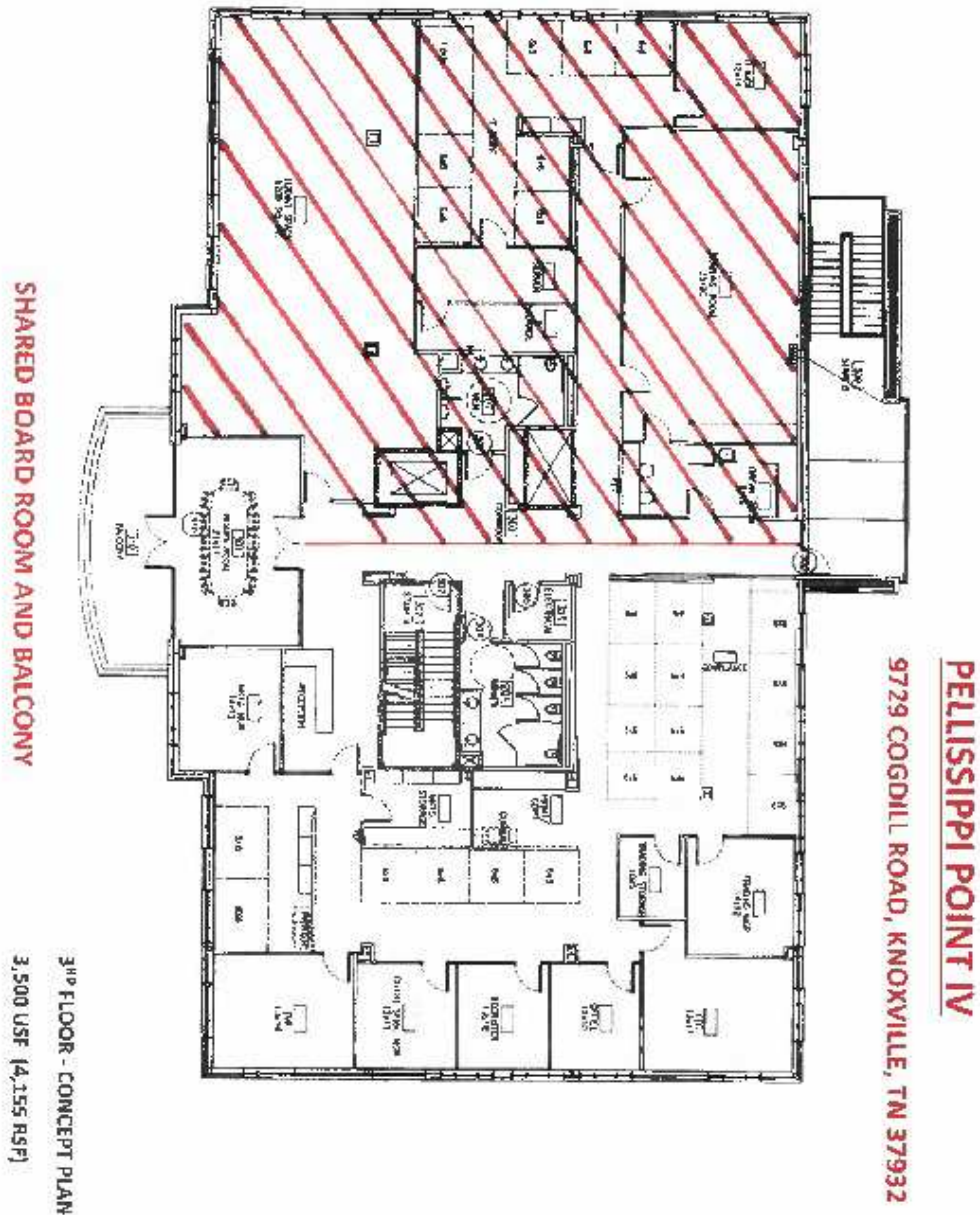
9721 Cogdill Road

# Photos

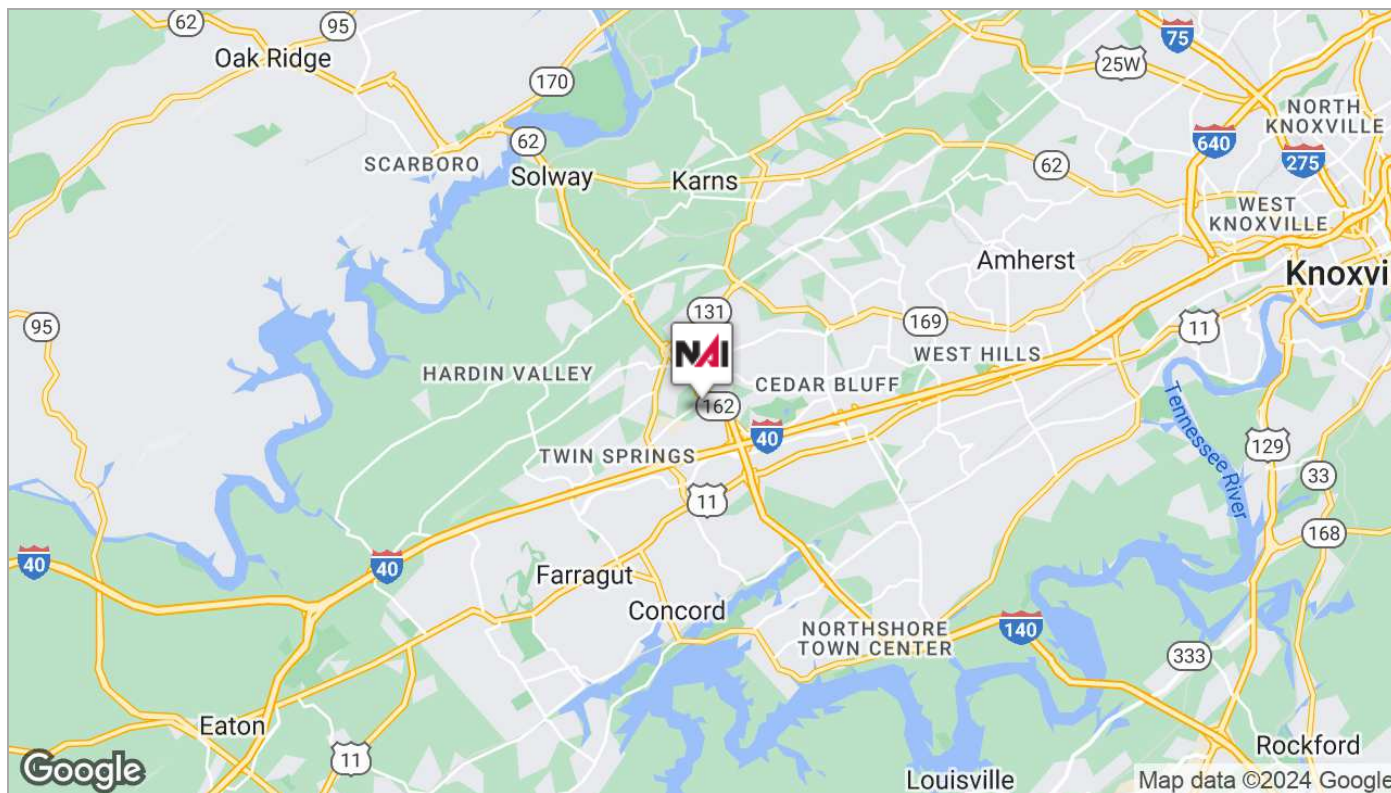
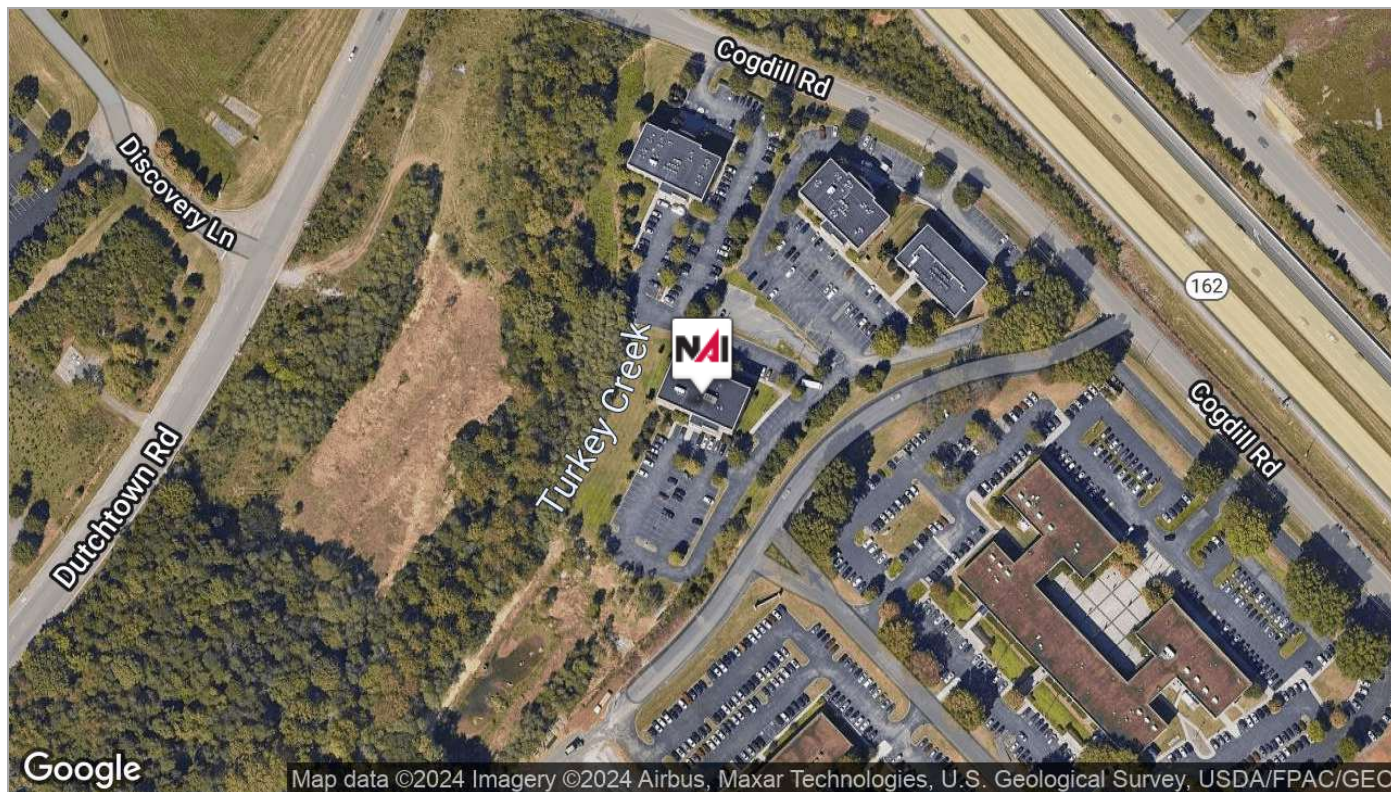


9729 Cogdill Road

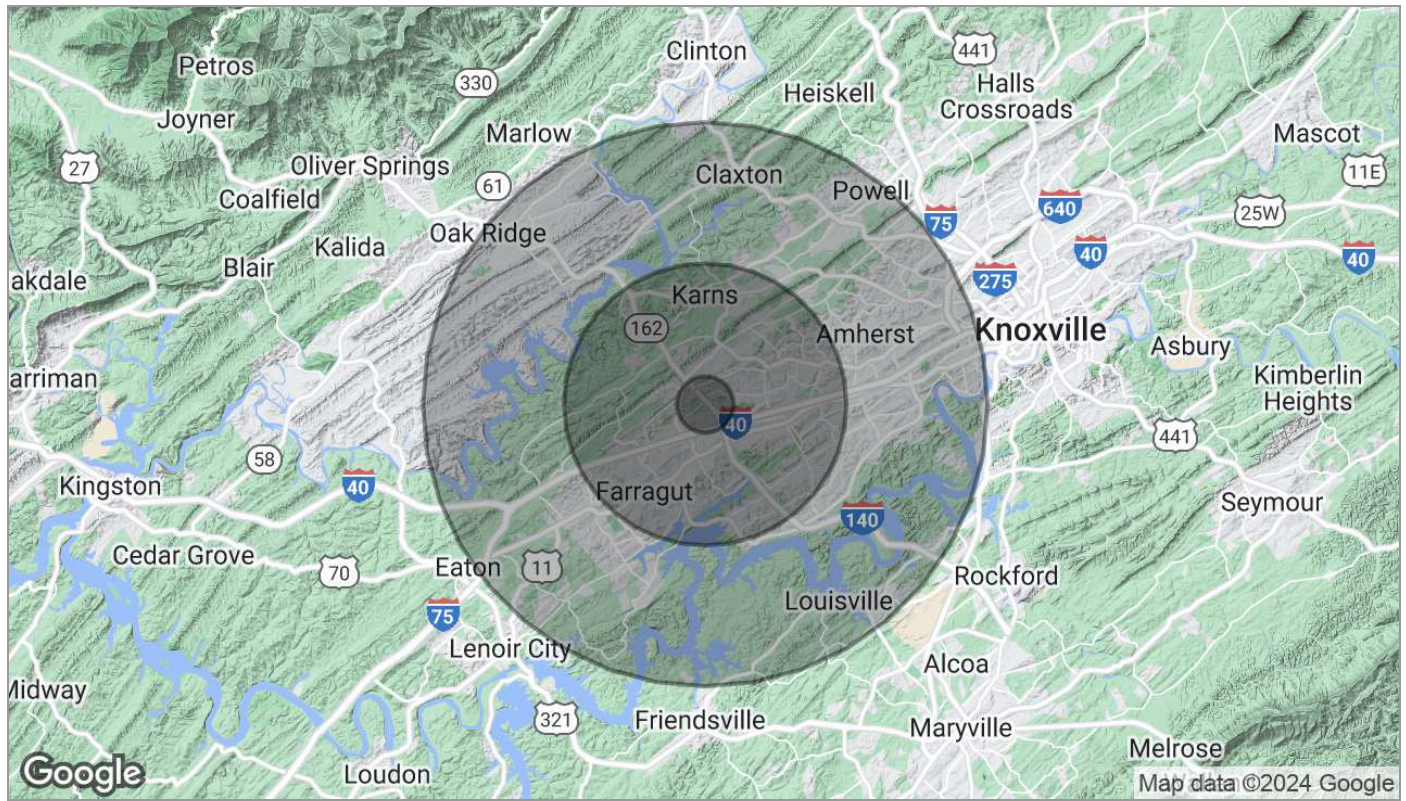
# Floor Plan - Third Floor



# Maps



# Demographics



Population	1 Mile	5 Miles	10 Miles
TOTAL POPULATION	2,855	92,856	251,967
MEDIAN AGE	41.1	38.4	38.5
MEDIAN AGE (MALE)	39.7	37.3	37.5
MEDIAN AGE (FEMALE)	42.4	38.9	39.4
Households & Income	1 Mile	5 Miles	10 Miles
TOTAL HOUSEHOLDS	1,117	37,342	102,577
# OF PERSONS PER HH	2.6	2.5	2.5
AVERAGE HH INCOME	\$86,349	\$85,206	\$84,535
AVERAGE HOUSE VALUE	\$201,588	\$236,465	\$252,269
Race	1 Mile	5 Miles	10 Miles
% WHITE	92.1%	89.7%	90.1%
% BLACK	5.7%	5.3%	4.7%
% ASIAN	1.1%	3.0%	2.8%
% HAWAIIAN	0.0%	0.1%	0.0%
% INDIAN	0.0%	0.2%	0.2%
% OTHER	0.1%	0.5%	0.6%
Ethnicity	1 Mile	5 Miles	10 Miles
% HISPANIC	2.6%	4.1%	3.7%

\* Demographic data derived from 2020 ACS - US Census