

## Jefferson Plaza Office Fully Leased

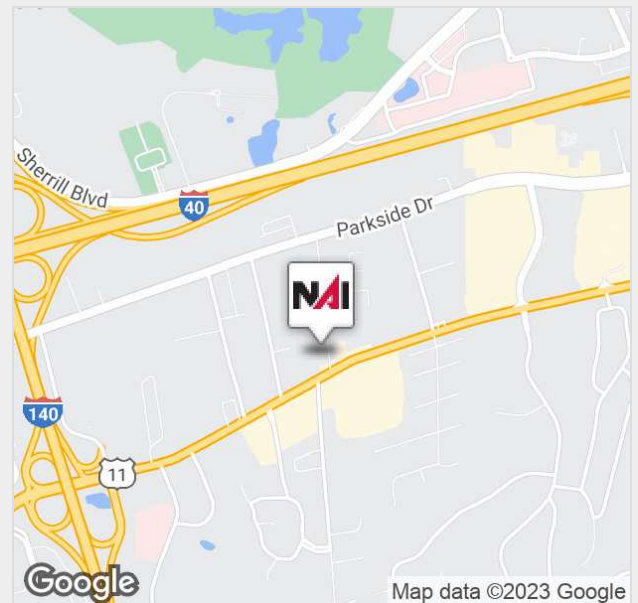


# 101 Sherlake Lane

Knoxville, Tennessee 37922

### Property Features

- Office space available with Kingston Pike exposure
- Drive up to the door space
- Conveniently located to Kingston Pike and Pellissippi Parkway
- Easy access to restaurants, banking and shopping
- Located within close proximity to I-40



For more information:

**Michelle Gibbs**

+1 865 531 6400 • [mgibbs@koellamoore.com](mailto:mgibbs@koellamoore.com)

**Roger M. Moore, Jr, SIOR**

+1 865 531 6400 • [rogermoore@koellamoore.com](mailto:rogermoore@koellamoore.com)

Lease Rate

## Negotiable

NO WARRANTY OR REPRESENTATION, EXPRESS OR IMPLIED, IS MADE AS TO THE ACCURACY OF THE INFORMATION CONTAINED HEREIN, AND THE SAME IS SUBMITTED SUBJECT TO ERRORS, OMISSIONS, CHANGE OF PRICE, RENTAL OR OTHER CONDITIONS, PRIOR SALE, LEASE OR FINANCING, OR WITHDRAWAL WITHOUT NOTICE, AND OF ANY SPECIAL LISTING CONDITIONS IMPOSED BY OUR PRINCIPALS NO WARRANTIES OR REPRESENTATIONS ARE MADE AS TO THE CONDITION OF THE PROPERTY OR ANY HAZARDS CONTAINED THEREIN ARE ANY TO BE IMPLIED.

NAI Koella | RM Moore

255 N Peters Road, Suite 101

+1 865 531 6400

[www.koellamoore.com](http://www.koellamoore.com)

For Lease

## OFFICE SPACE AVAILABLE IN JEFFERSON PLAZA



### Property Summary

Available SF:	Fully Leased
Lease Rate:	Negotiable
Building Size:	14,639 SF
Building Class:	B
Year Built:	1989
Market:	West
Sub Market:	Cedar Bluff
Cross Streets:	Sherlake Lane & Kingston Pike

### Property Overview

Office space available for Lease with Kingston Pike exposure:  
Suite 107 - 1,984 square feet  
\$17.00 PSF - modified gross

### Location Overview

Jefferson Plaza is located at the corner of Sherlake Lane and Kingston Pike with great visibility to Kingston Pike. Just minutes from Pellissippi Parkway and conveniently located to restaurants, banking and shopping.



For Lease

OFFICE SPACE AVAILABLE IN JEFFERSON PLAZA



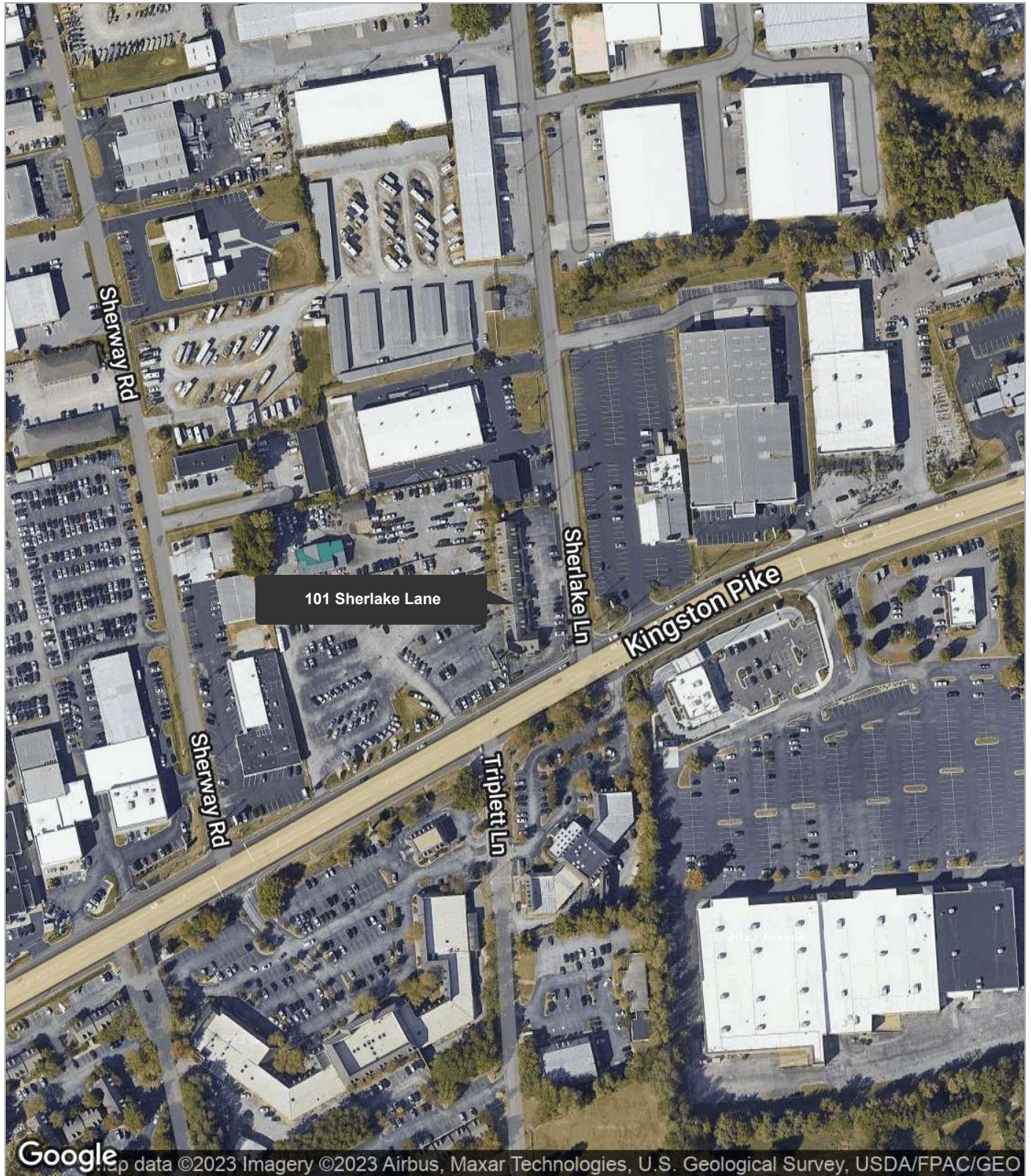
For Lease

OFFICE SPACE AVAILABLE IN JEFFERSON PLAZA



For Lease

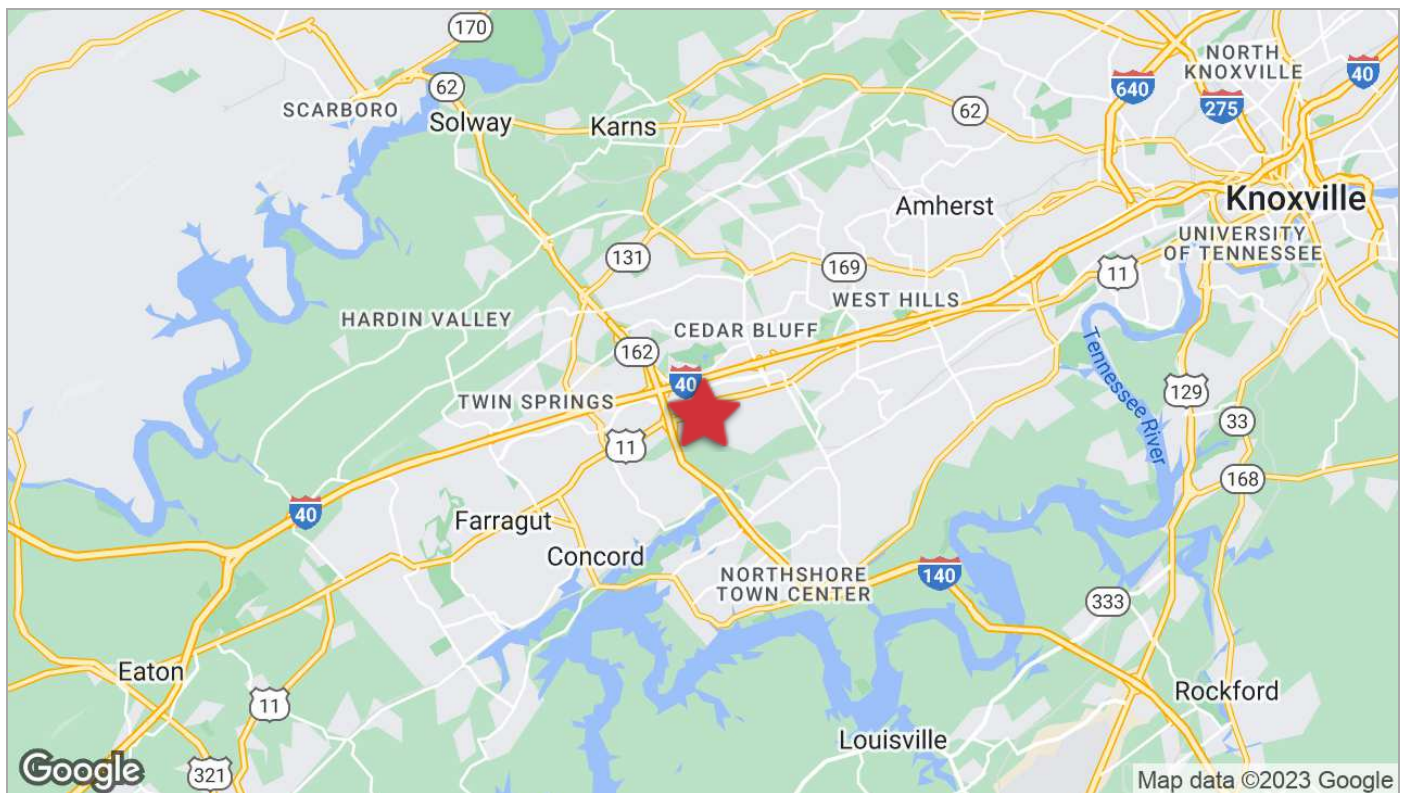
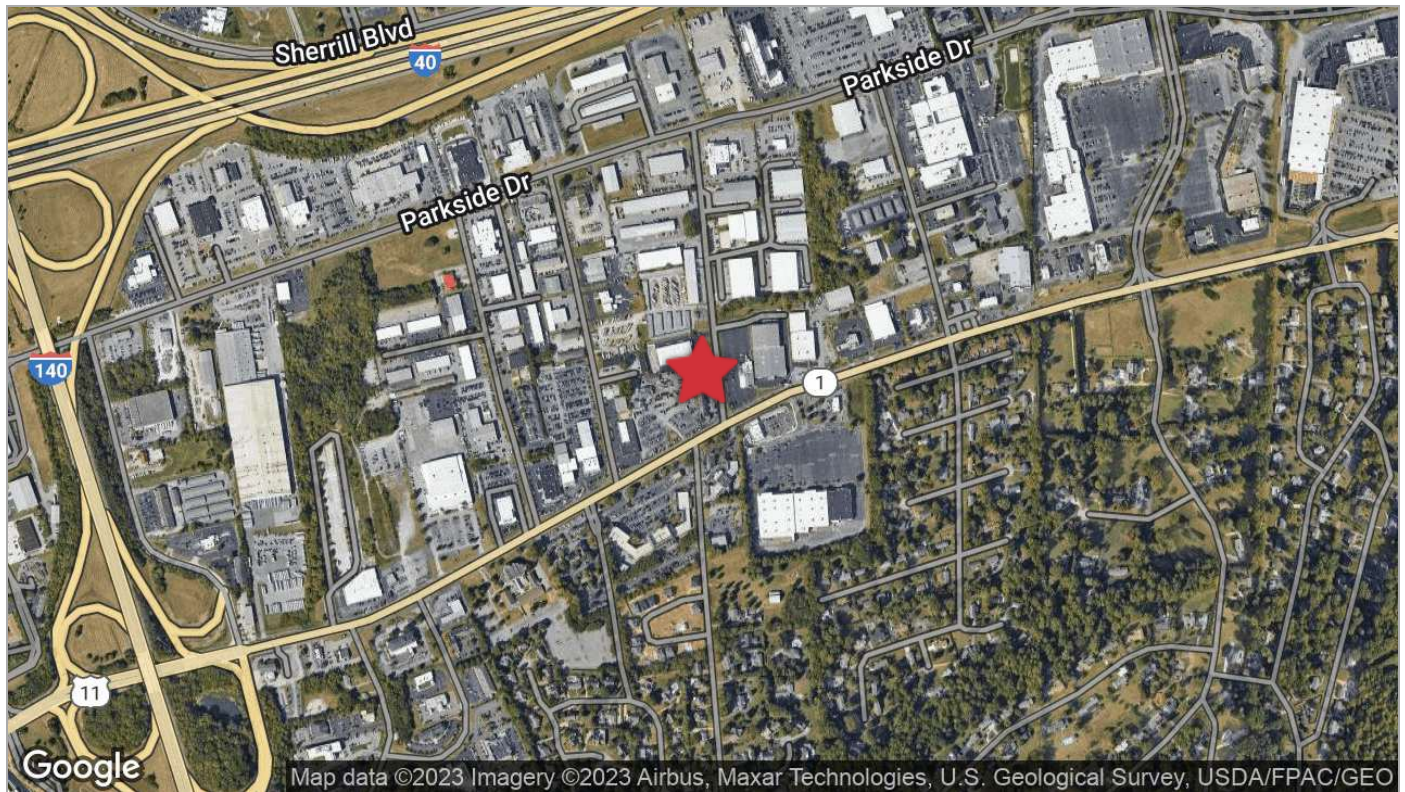
## OFFICE SPACE AVAILABLE IN JEFFERSON PLAZA





For Lease

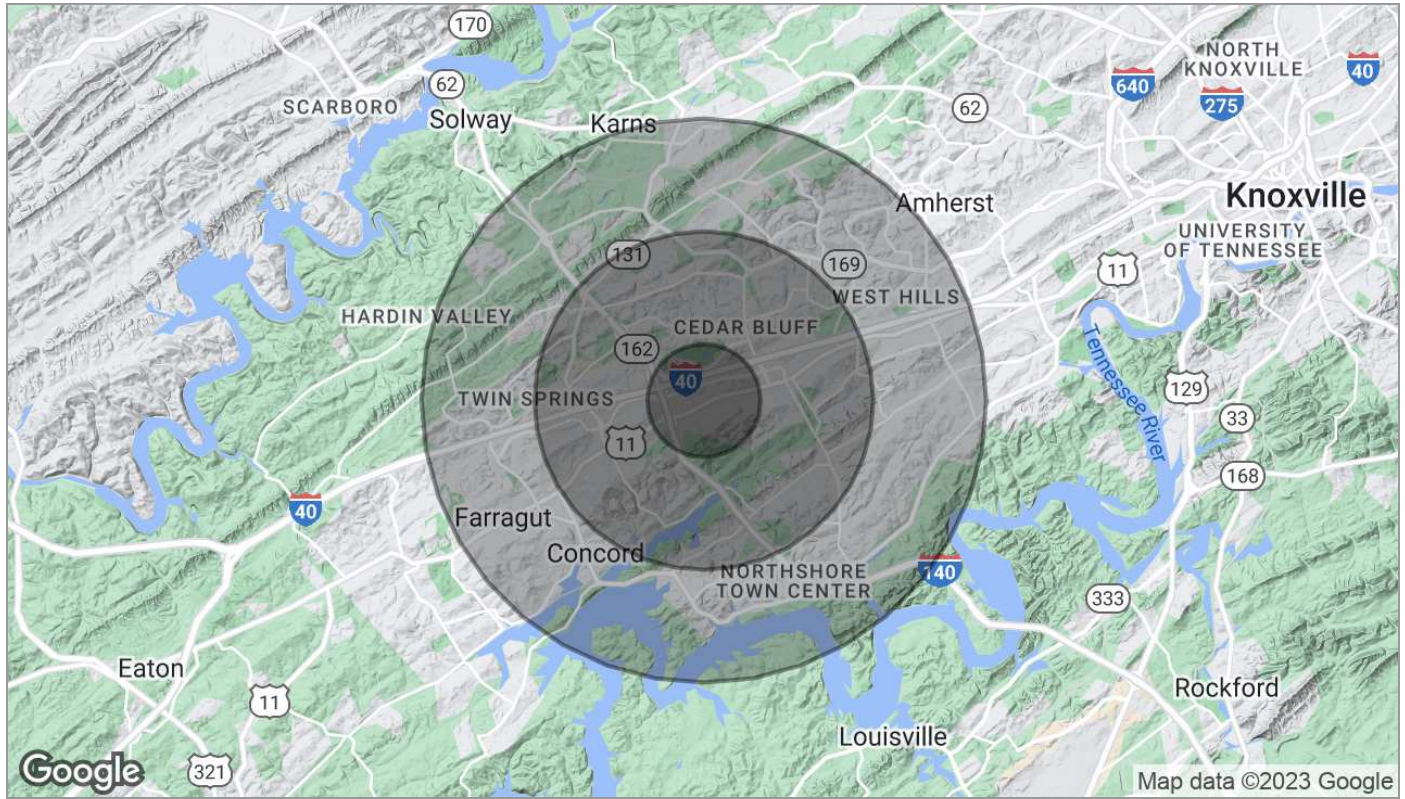
## OFFICE SPACE AVAILABLE IN JEFFERSON PLAZA





For Lease

## OFFICE SPACE AVAILABLE IN JEFFERSON PLAZA



Population	1 Mile	3 Miles	5 Miles
TOTAL POPULATION	3,659	43,920	114,527
MEDIAN AGE	38.4	36.7	37.2
MEDIAN AGE (MALE)	41.2	35.8	36.1
MEDIAN AGE (FEMALE)	36.9	37.2	38.0
Households & Income	1 Mile	3 Miles	5 Miles
TOTAL HOUSEHOLDS	1,436	17,903	46,944
# OF PERSONS PER HH	2.5	2.5	2.4
AVERAGE HH INCOME	\$96,077	\$85,872	\$86,612
AVERAGE HOUSE VALUE	\$245,095	\$250,533	\$232,411

\* Demographic data derived from 2020 ACS - US Census

For Lease

OFFICE SPACE AVAILABLE IN JEFFERSON PLAZA

# Agent Profile



## Michelle Gibbs

Senior Advisor  
NAI Koella | RM Moore  
o +1 865 531 6400  
c +1 865 228 4264  
[mgibbs@koellamoore.com](mailto:mgibbs@koellamoore.com)

### Professional Background

Michelle R. Gibbs serves as a Senior Advisor for NAI Koella | RM Moore, specializing in the sale and leasing of office and retail property in Knoxville, Tennessee. With over twelve years of industry experience, she brings her hometown charm and knowledge of the surrounding area to the table.

Prior to joining NAI Koella | RM Moore, Michelle worked for a property management company specializing in Knoxville office property. She received her affiliate broker license in 1992 and specialized in office leasing and property management. During this time, she managed and leased more than 1 million square feet of space in the Knoxville, Tellico Village and Cookeville areas of Tennessee, which also included more than 200,000 square feet of retail space.

Throughout her time with R.M. Moore Real Estate, Michelle was consistently recognized for being among the Top 100 Nationwide Sales Leaders of Sperry Van Ness. She also consistently achieved a Diamond Volume Award for exceeding \$5 million in transaction volume per year.

In 2005, Michelle managed the development of Phase II of the Jackson Plaza shopping center located in Cookeville, for a total expansion of 80,000 square feet. She worked with potential tenants, the City of Cookeville, the Chamber of Commerce and contractors in the completion of this project.



# Agent Profile



## Roger M. Moore, Jr, SIOR

President  
NAI Koella | RM Moore  
o +1 865 531 6400  
c +1 865 755 8774  
[rogermoore@koellamoore.com](mailto:rogermoore@koellamoore.com)

## Professional Background

Roger Moore, Jr. is a Principal Broker and serves as President of NAI Koella | RM Moore. With more than 25 years as a real estate agent and broker, Moore has amassed an impressive amount of experience in the sales and leasing of commercial properties.

Roger began his career in the industry in 1980 selling real estate for his father, who, at the time, had the largest real estate company in the state of Tennessee. In 1995, following in his father's footsteps, Roger carried on a family tradition when he opened R.M. Moore Real Estate Company as a full-service firm and focused solely on commercial real estate. R.M. Moore Real Estate was named on the INC 5000 list of the fastest growing companies in 2007 and 2008 and in February of 2007 was recognized in the Top 101 in Commercial Real Estate by Business TN Magazine. Roger was also affiliated with Sperry Van Ness (SVN), where his transactions consistently ranked him in the Top 20 of SVN Advisors and in the SVN Partner's Circle for achieving highest total volumes amongst 900+ Advisors. In 2017, Roger combined business with that of Maribel Koella of NAI Knoxville to form the largest commercial real estate group in East Tennessee, now known as NAI Koella | RM Moore.

Roger takes a very active role in the everyday functioning of the company. Not only does he assist in managing the firm and its many employees, but he also specializes in providing commercial property, tenant acquisition, and property management services through offices in both Knoxville and Sevierville, Tennessee.

## Memberships & Affiliations

Professional Designations:

Society of Industrial and Office Realtor (SIOR)

2018 CCIM Broker of the Year Award

Previously Licensed Real Estate Broker in both Kentucky and North Carolina

Current and Past Affiliations:

Leadership Knoxville

Farragut and West Knoxville Rotary

Knoxville Chamber of Commerce - Past Board Member

Harmony Adoptions - Past Board Member

Foster Care - Past Board Member

Concord Sertoma - Past President

The Young Entrepreneurs Organization

Boy Scouts of America

American Red Cross - Past Board Member