



# 10670 Parkside Drive

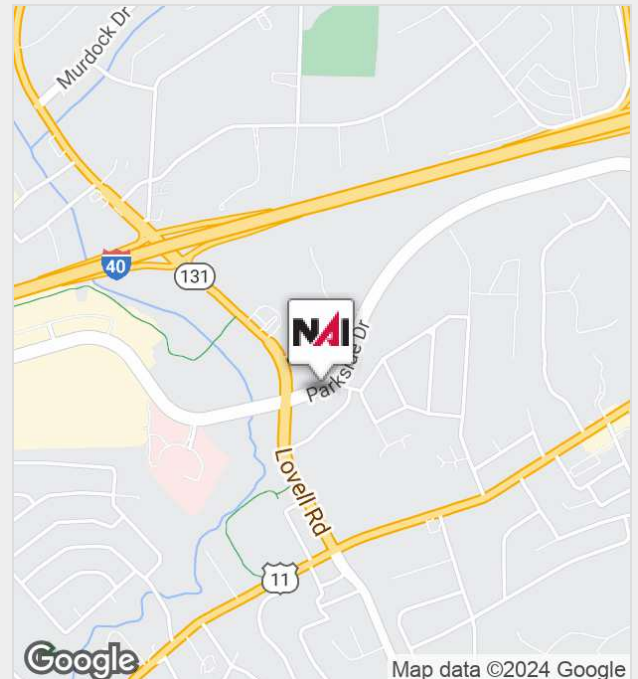
Knoxville, Tennessee 37922

## Property Features

- Class A Retail Center which includes Wasabi Restaurant as the Anchor Tenant.
- At the entrance of Turkey Creek Development
- Great signage and visibility
- Space consists of mostly open space with one private room and restroom
- Exterior recently painted

Lease Rate

**\$22.50 SF/Yr**



For more information:

**Roger M. Moore, Jr, SIOR**

+1 865 531 6400 • [rogermoore@koellamoore.com](mailto:rogermoore@koellamoore.com)

NO WARRANTY OR REPRESENTATION, EXPRESS OR IMPLIED, IS MADE AS TO THE ACCURACY OF THE INFORMATION CONTAINED HEREIN, AND THE SAME IS SUBMITTED SUBJECT TO ERRORS, OMISSIONS, CHANGE OF PRICE, RENTAL OR OTHER CONDITIONS, PRIOR SALE, LEASE OR FINANCING, OR WITHDRAWAL WITHOUT NOTICE, AND OF ANY SPECIAL LISTING CONDITIONS IMPOSED BY OUR PRINCIPALS NO WARRANTIES OR REPRESENTATIONS ARE MADE AS TO THE CONDITION OF THE PROPERTY OR ANY HAZARDS CONTAINED THEREIN ARE ANY TO BE IMPLIED.

NAI Koella | RM Moore

255 N Peters Road, Suite 101

+1 865 531 6400

[www.koellamoore.com](http://www.koellamoore.com)

For Lease

# Parkside Retail Center



## Property Summary

Available SF:	938 SF
Lease Rate:	\$22.50 SF/yr (NNN)
Building Size:	7,925 SF
Ceiling Height:	10.0 FT
Year Built:	2000
Market:	Knoxville
Sub Market:	Farragut
Cross Streets:	Lovell Road

## Property Overview

Class A Retail Center which includes Wasabi Restaurant as the Anchor Tenant. At the entrance of Turkey Creek Development Great signage and visibility.

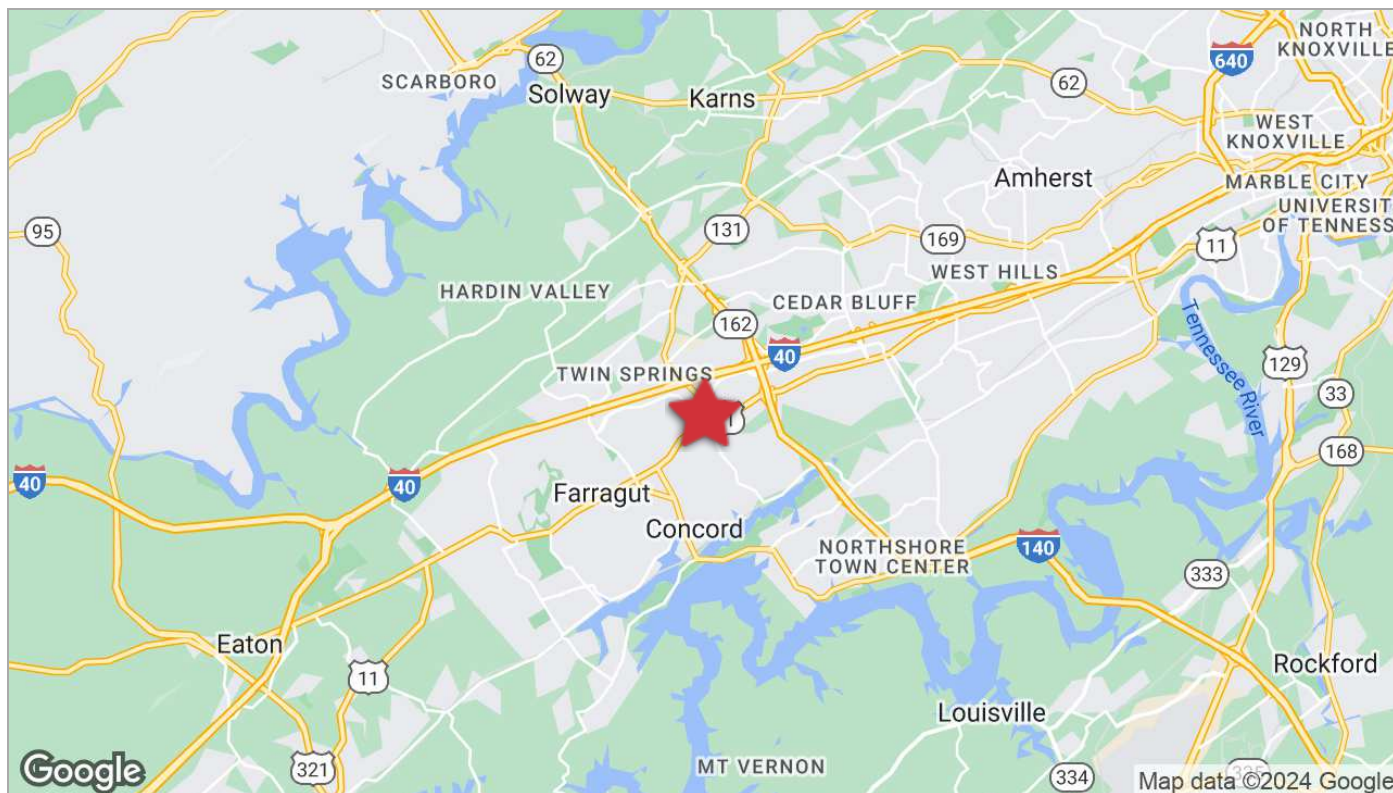
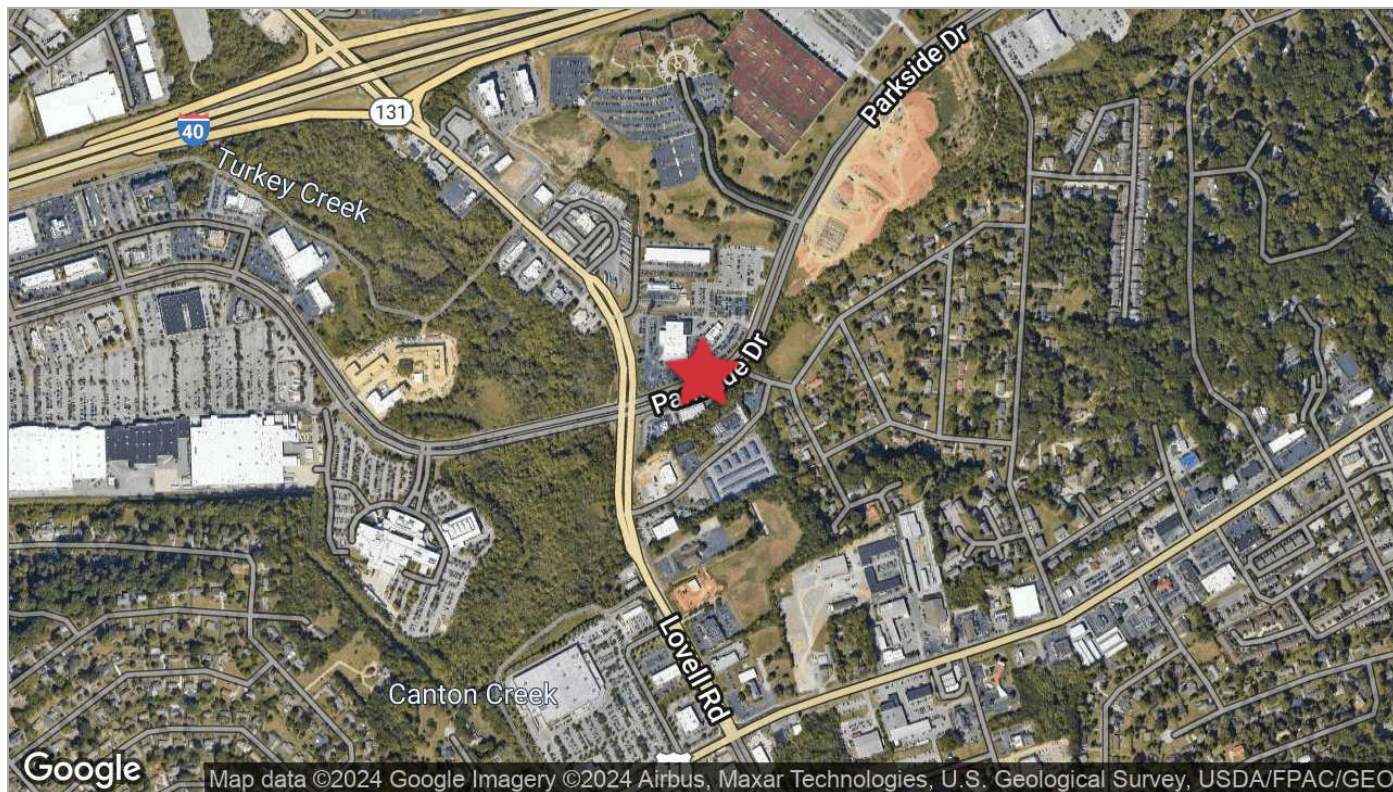
## Location Overview

The building located at the intersection of Parkside Drive and Lovell Road with easy access to the Turkey Creek Development. Accessible to I-40 and Kingston Pike.



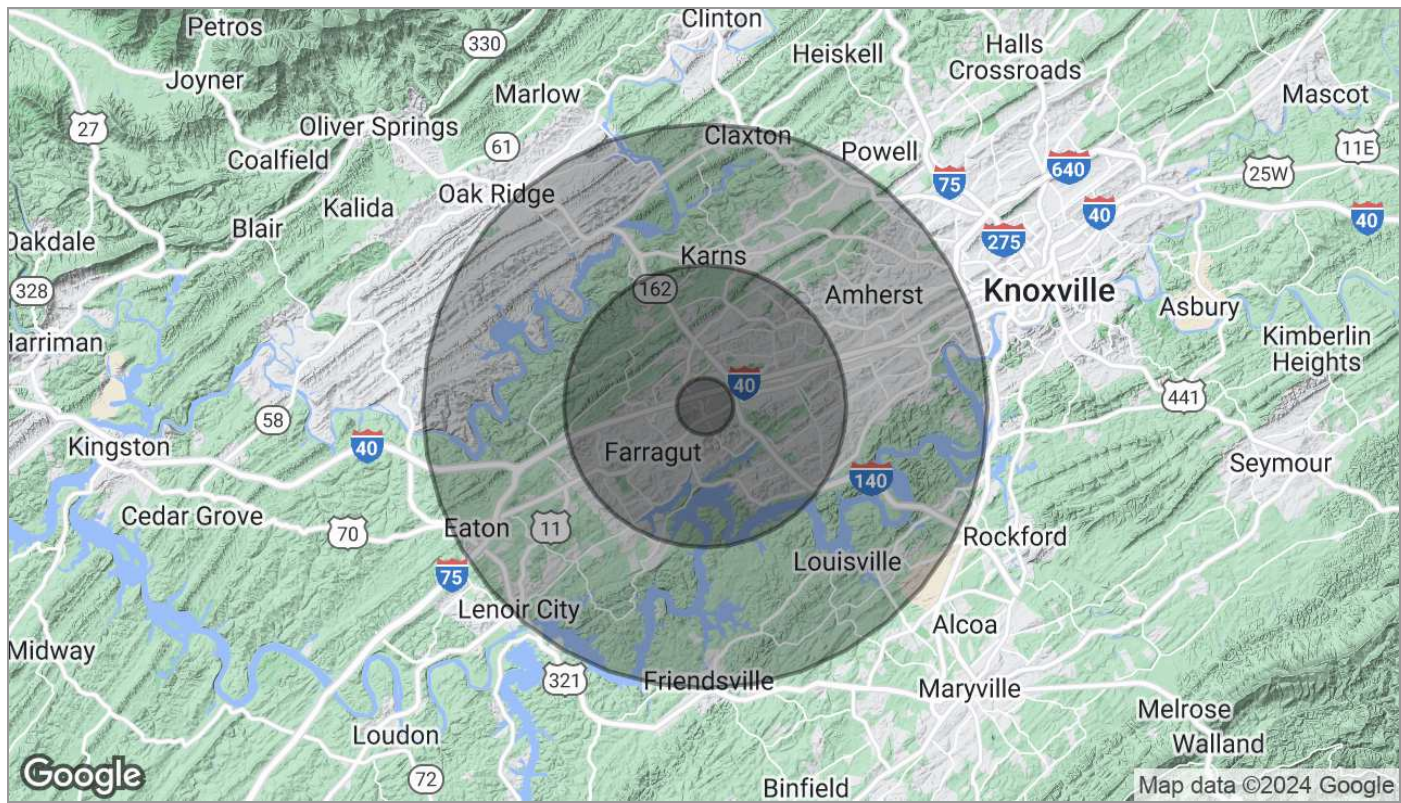
For Lease

# Parkside Retail Center





# Parkside Retail Center



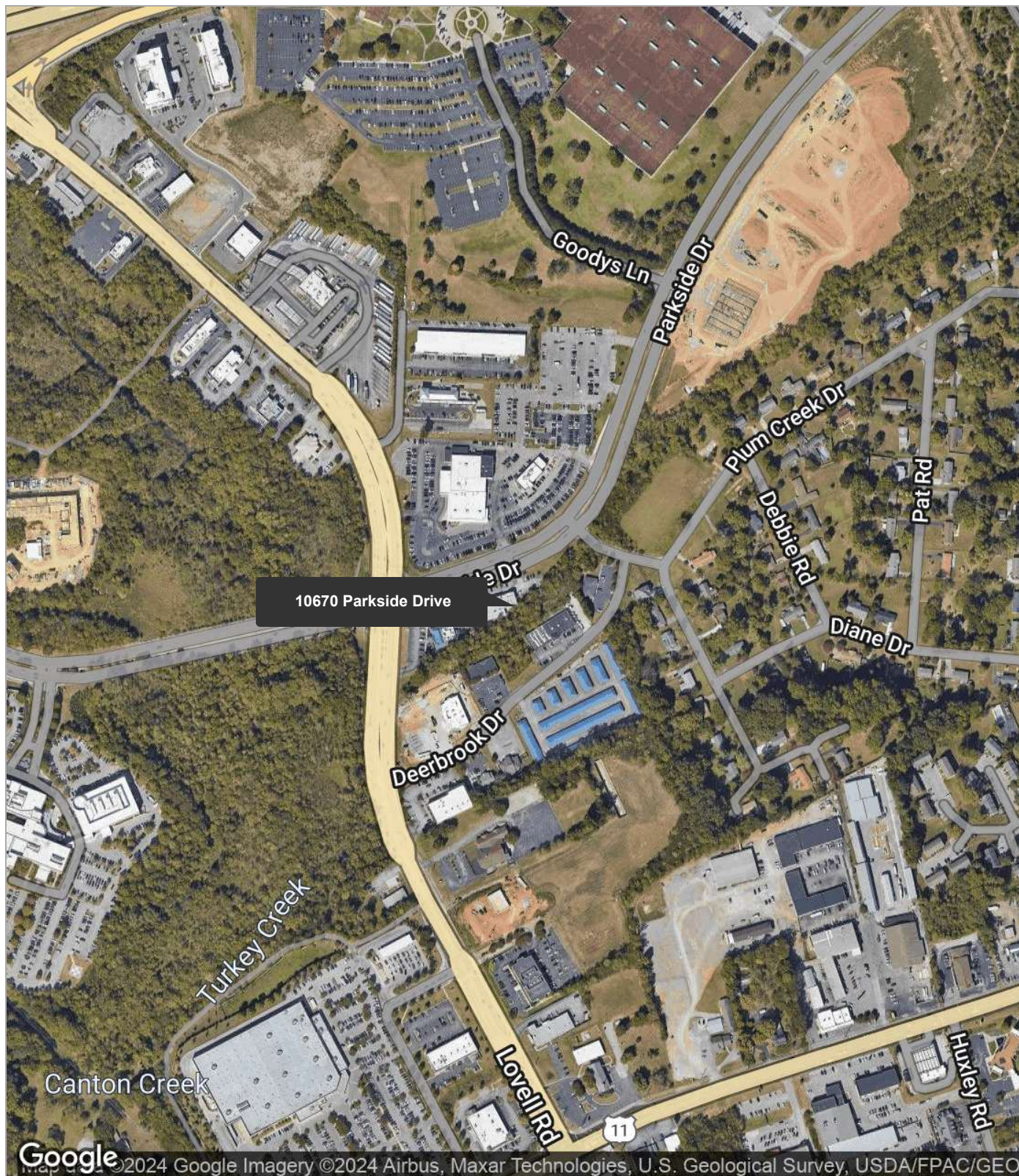
Population	1 Mile	5 Miles	10 Miles
TOTAL POPULATION	3,225	88,378	233,852
MEDIAN AGE	43.2	38.9	38.6
MEDIAN AGE (MALE)	44.0	37.9	37.9
MEDIAN AGE (FEMALE)	41.7	39.4	39.4
Households & Income	1 Mile	5 Miles	10 Miles
TOTAL HOUSEHOLDS	1,321	34,426	94,833
# OF PERSONS PER HH	2.4	2.6	2.5
AVERAGE HH INCOME	\$86,300	\$93,155	\$86,783
AVERAGE HOUSE VALUE	\$243,049	\$265,043	\$255,842

\* Demographic data derived from 2020 ACS - US Census



For Lease

# Parkside Retail Center





## Agent Profile



**Roger M. Moore, Jr, SIOR**

President  
NAI Koella | RM Moore  
o +1 865 531 6400  
c +1 865 755 8774  
[rogermoore@koellamoore.com](mailto:rogermoore@koellamoore.com)

### Professional Background

Roger Moore, Jr. is a Principal Broker and serves as President of NAI Koella | RM Moore. With more than 25 years as a real estate agent and broker, Moore has amassed an impressive amount of experience in the sales and leasing of commercial properties.

Roger began his career in the industry in 1980 selling real estate for his father, who, at the time, had the largest real estate company in the state of Tennessee. In 1995, following in his father's footsteps, Roger carried on a family tradition when he opened R.M. Moore Real Estate Company as a full-service firm and focused solely on commercial real estate. R.M. Moore Real Estate was named on the INC 5000 list of the fastest growing companies in 2007 and 2008 and in February of 2007 was recognized in the Top 101 in Commercial Real Estate by Business TN Magazine. Roger was also affiliated with Sperry Van Ness (SVN), where his transactions consistently ranked him in the Top 20 of SVN Advisors and in the SVN Partner's Circle for achieving highest total volumes amongst 900+ Advisors. In 2017, Roger combined business with that of Maribel Koella of NAI Knoxville to form the largest commercial real estate group in East Tennessee, now known as NAI Koella | RM Moore.

Roger takes a very active role in the everyday functioning of the company. Not only does he assist in managing the firm and its many employees, but he also specializes in providing commercial property, tenant acquisition, and property management services through offices in both Knoxville and Sevierville, Tennessee.

### Memberships & Affiliations

Professional Designations:

Society of Industrial and Office Realtor (SIOR)

2018 CCIM Broker of the Year Award

Previously Licensed Real Estate Broker in both Kentucky and North Carolina

Current and Past Affiliations:

Leadership Knoxville

Farragut and West Knoxville Rotary

Knoxville Chamber of Commerce - Past Board Member

Harmony Adoptions - Past Board Member

Foster Care - Past Board Member

Concord Sertoma - Past President

The Young Entrepreneurs Organization

Boy Scouts of America

American Red Cross - Past Board Member

### Education