



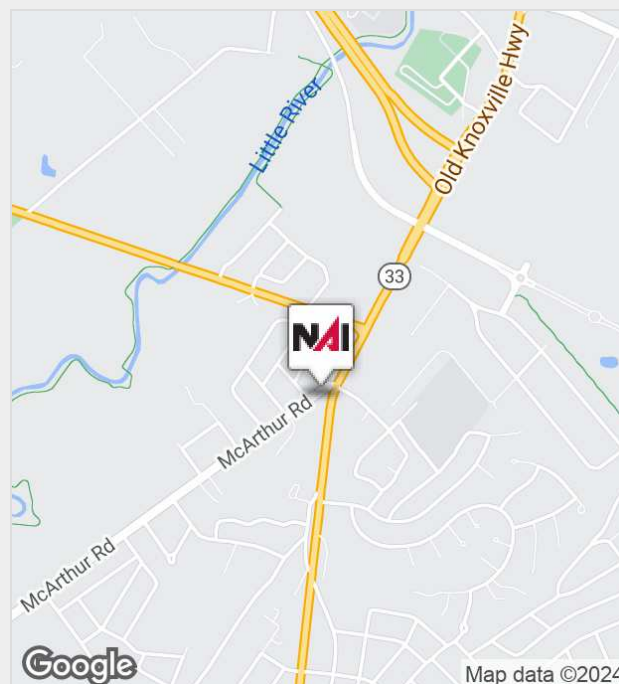
# 2747 East Broadway

Maryville, Tennessee 37804

## Property Features

- Suite B - 885 SF
- Full Service Lease
- Furnished
- Tenant pays phone and internet

| Space | Lease Rate | Size (SF) |
|-------|------------|-----------|
|-------|------------|-----------|



For more information:

**Matt Fentress, RPA, CPM, CCIM, SIOR**

+1 865 777 3037 • [mfentress@koellamoore.com](mailto:mfentress@koellamoore.com)

NO WARRANTY OR REPRESENTATION, EXPRESS OR IMPLIED, IS MADE AS TO THE ACCURACY OF THE INFORMATION CONTAINED HEREIN, AND THE SAME IS SUBMITTED SUBJECT TO ERRORS, OMISSIONS, CHANGE OF PRICE, RENTAL OR OTHER CONDITIONS, PRIOR SALE, LEASE OR FINANCING, OR WITHDRAWAL WITHOUT NOTICE, AND OF ANY SPECIAL LISTING CONDITIONS IMPOSED BY OUR PRINCIPALS NO WARRANTIES OR REPRESENTATIONS ARE MADE AS TO THE CONDITION OF THE PROPERTY OR ANY HAZARDS CONTAINED THEREIN ARE ANY TO BE IMPLIED.

NAI Koella | RM Moore

255 N Peters Road, Suite 101

+1 865 531 6400

[www.koellamoore.com](http://www.koellamoore.com)



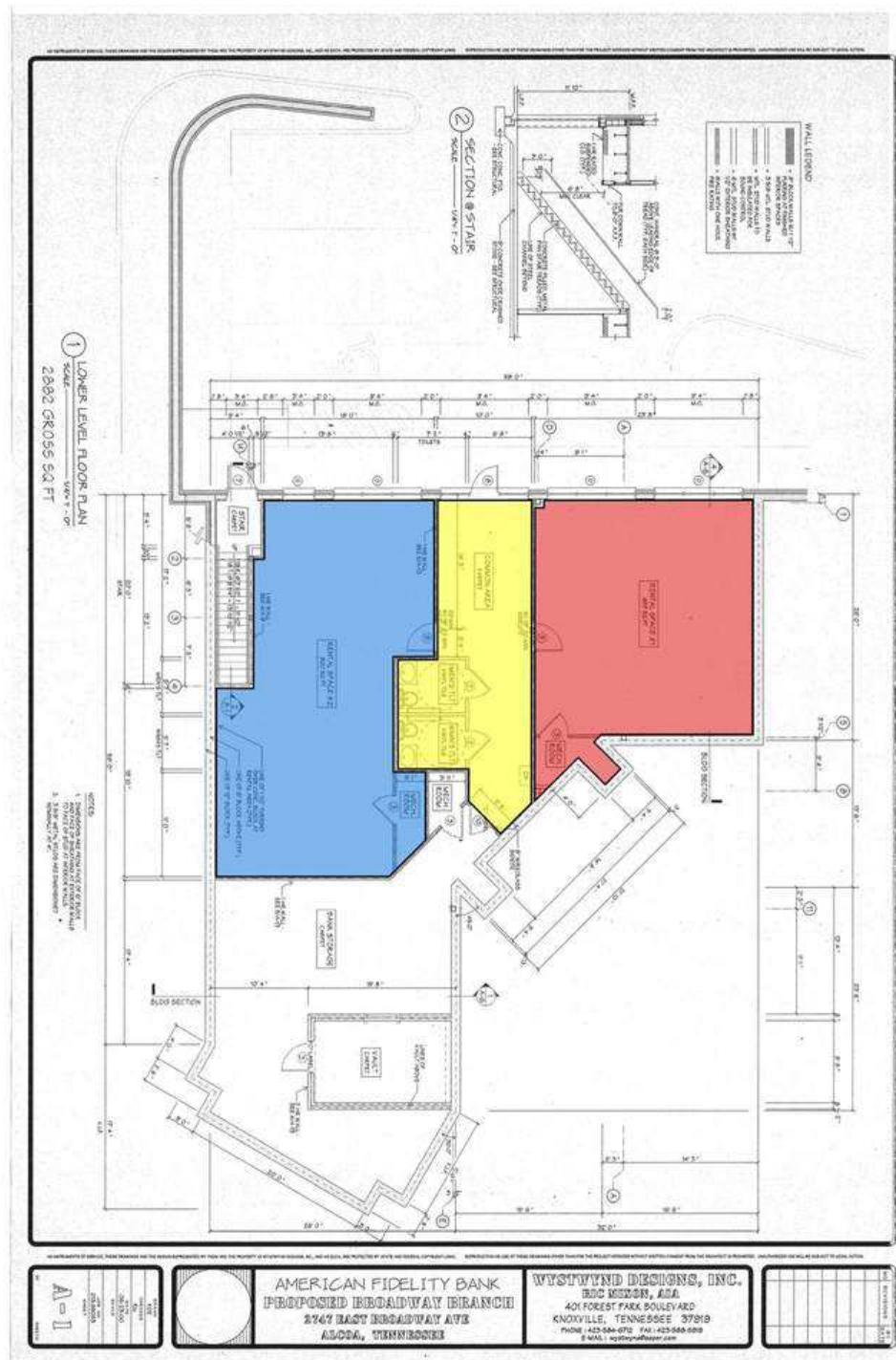
For Lease

# 2747 East Broadway



For Lease

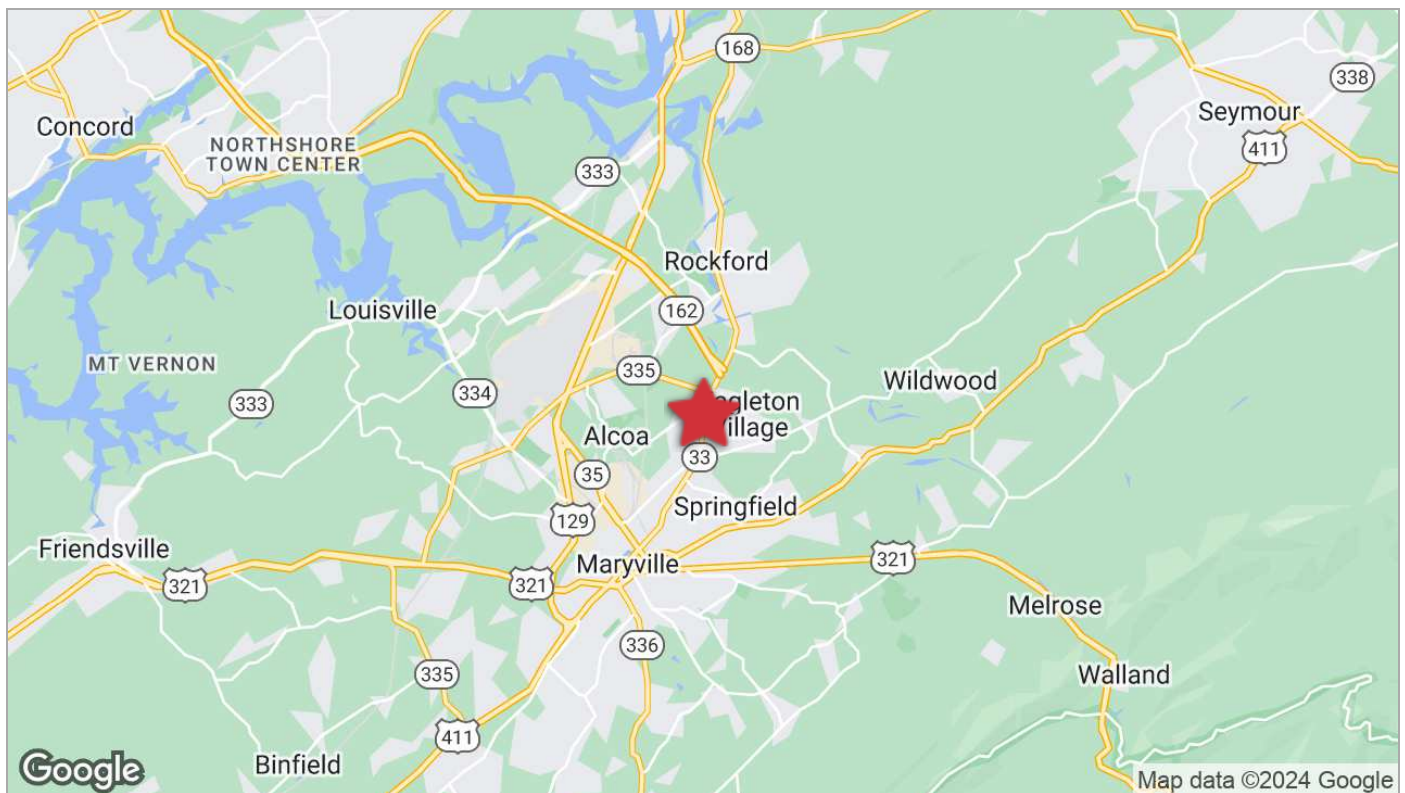
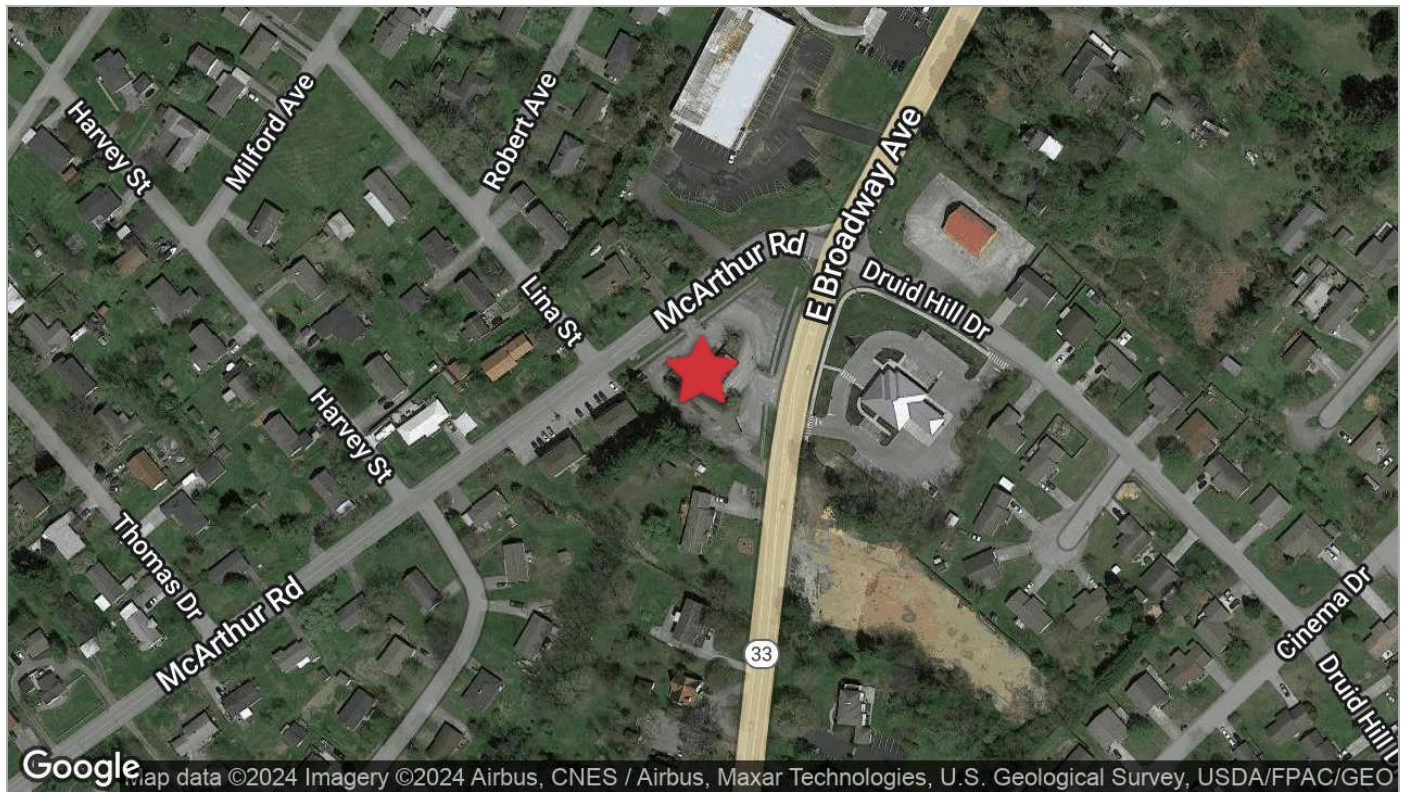
# 2747 East Broadway





For Lease

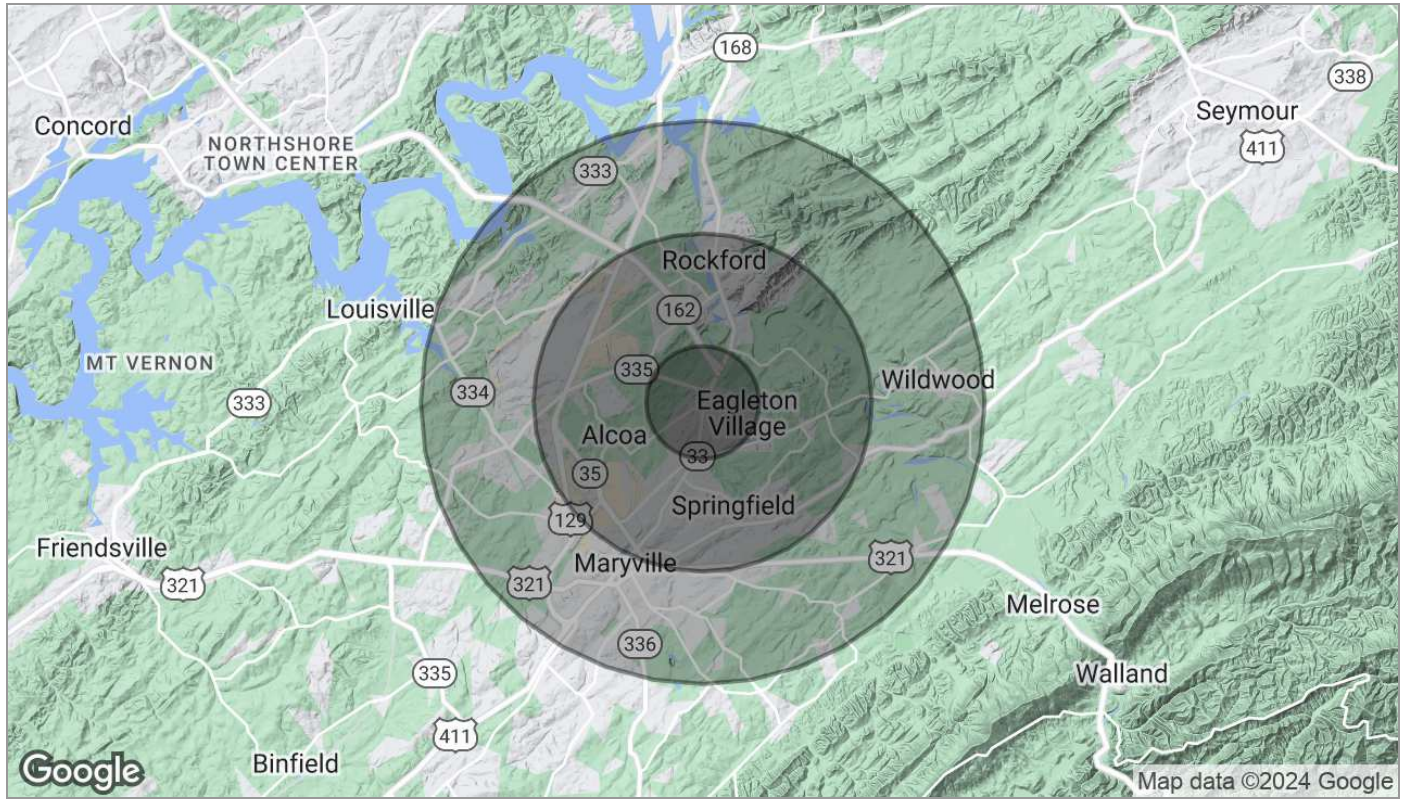
# 2747 East Broadway





For Lease

# 2747 East Broadway



| Population          | 1 Mile    | 3 Miles   | 5 Miles   |
|---------------------|-----------|-----------|-----------|
| TOTAL POPULATION    | 2,784     | 23,642    | 55,611    |
| MEDIAN AGE          | 36.1      | 38.8      | 38.5      |
| MEDIAN AGE (MALE)   | 33.0      | 36.7      | 36.9      |
| MEDIAN AGE (FEMALE) | 39.2      | 40.8      | 40.1      |
| Households & Income | 1 Mile    | 3 Miles   | 5 Miles   |
| TOTAL HOUSEHOLDS    | 1,069     | 9,472     | 22,614    |
| # OF PERSONS PER HH | 2.6       | 2.5       | 2.5       |
| AVERAGE HH INCOME   | \$47,618  | \$53,927  | \$53,572  |
| AVERAGE HOUSE VALUE | \$178,126 | \$166,863 | \$167,395 |

\* Demographic data derived from 2020 ACS - US Census