



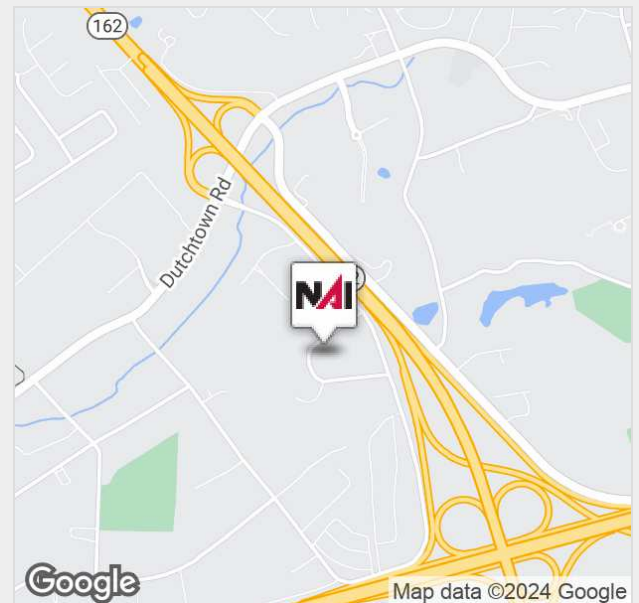
10301 Technology Drive

Knoxville, Tennessee 37932

Property Features

- Windows throughout the spaces
- Immediate occupancy available
- Space affords a mix of offices and open space for cubicles and training rooms
- Building provides ample parking
- Modified Gross Lease

Suite	Lease Rate	Size (SF)
101	\$16.00 SF/YR	3,122 SF
102	\$16.00 SF/YR	5,092 SF



For more information:

Roger M. Moore, Jr, SIOR

+1 865 531 6400 • rogermoore@koellamoore.com

Matt Fentress, RPA, CPM, CCIM, SIOR

+1 865 777 3037 • mfentress@koellamoore.com

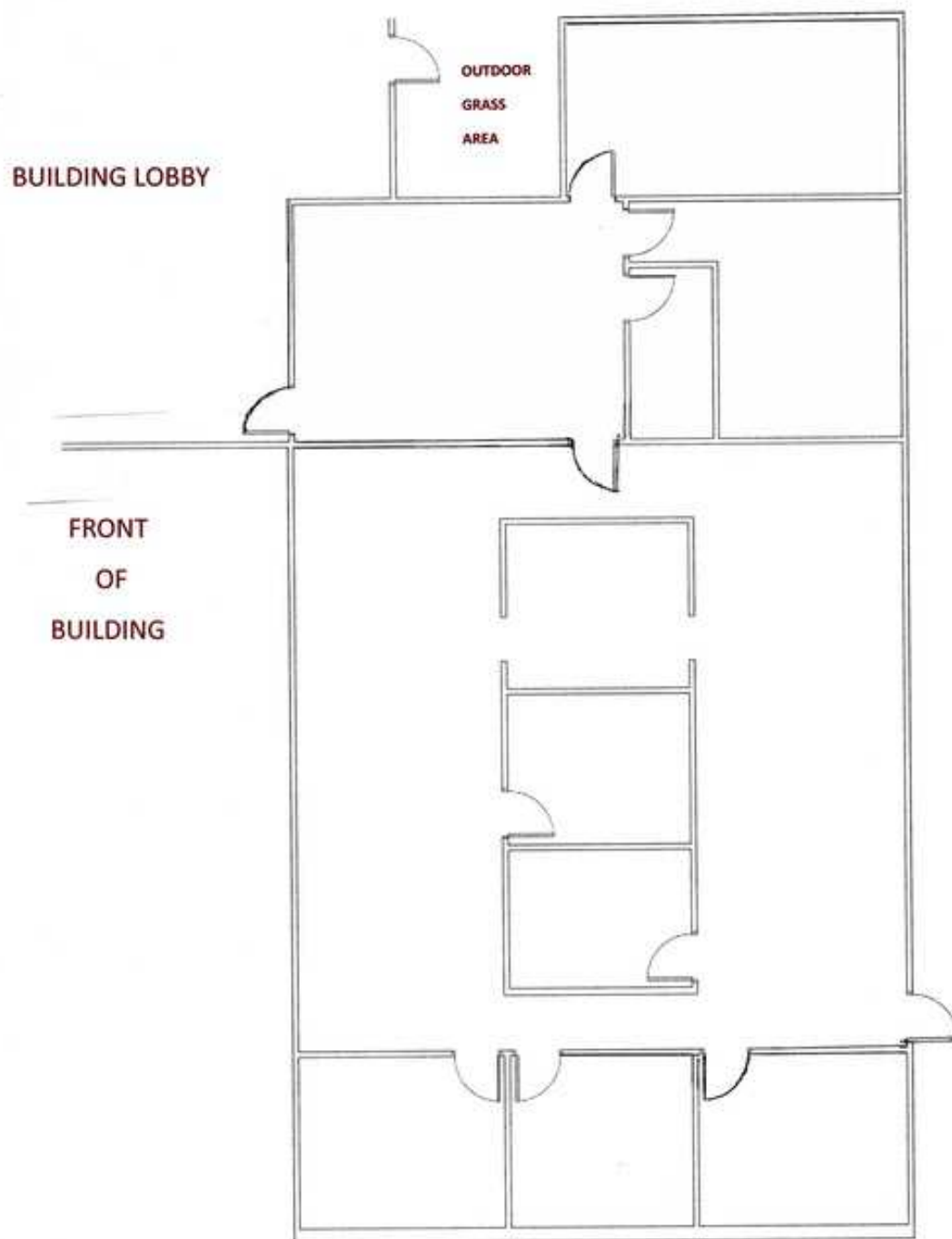
For Lease

10301 Technology Drive



For Lease

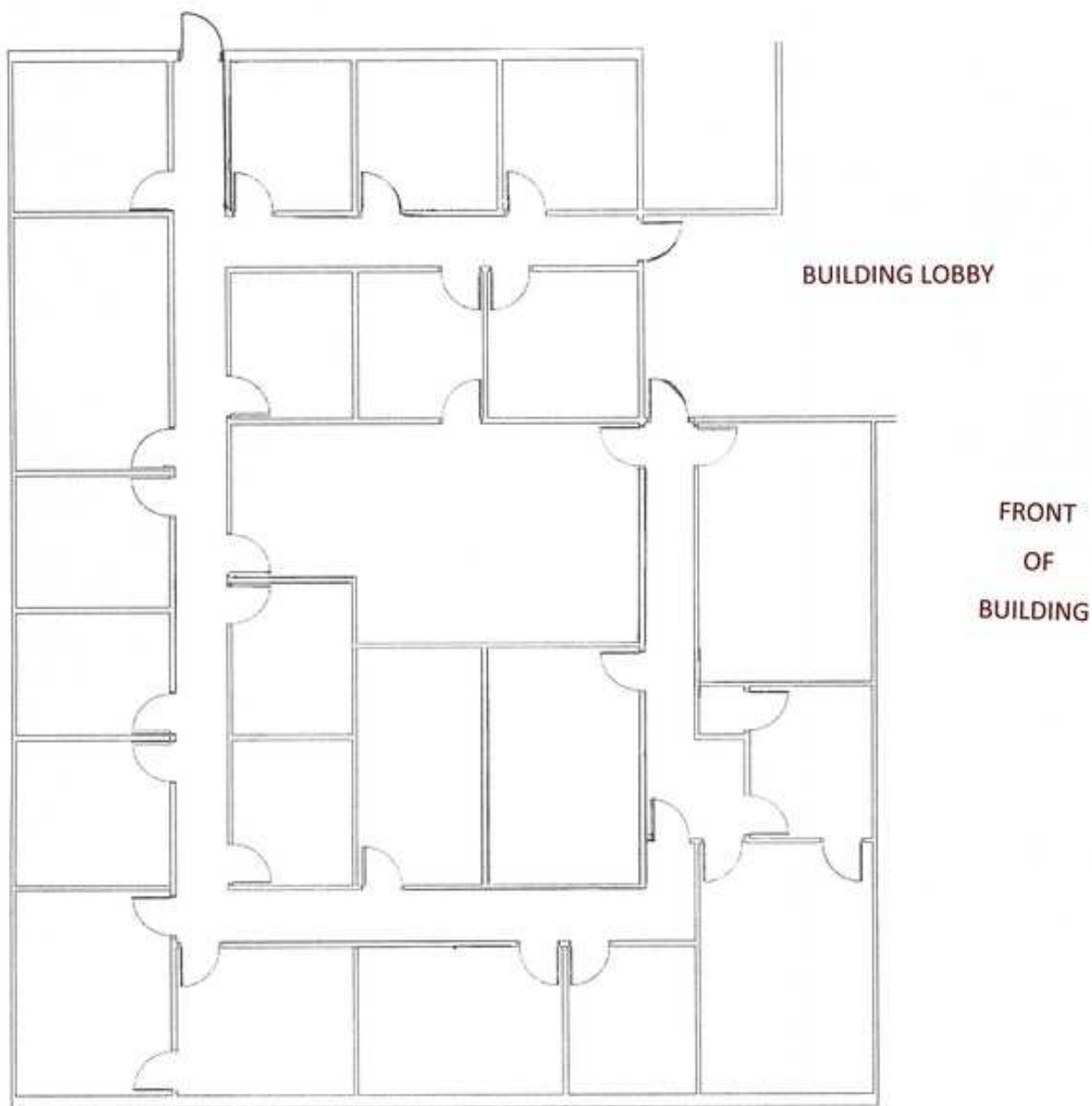
Suite 101- 3,122 SF



For Lease

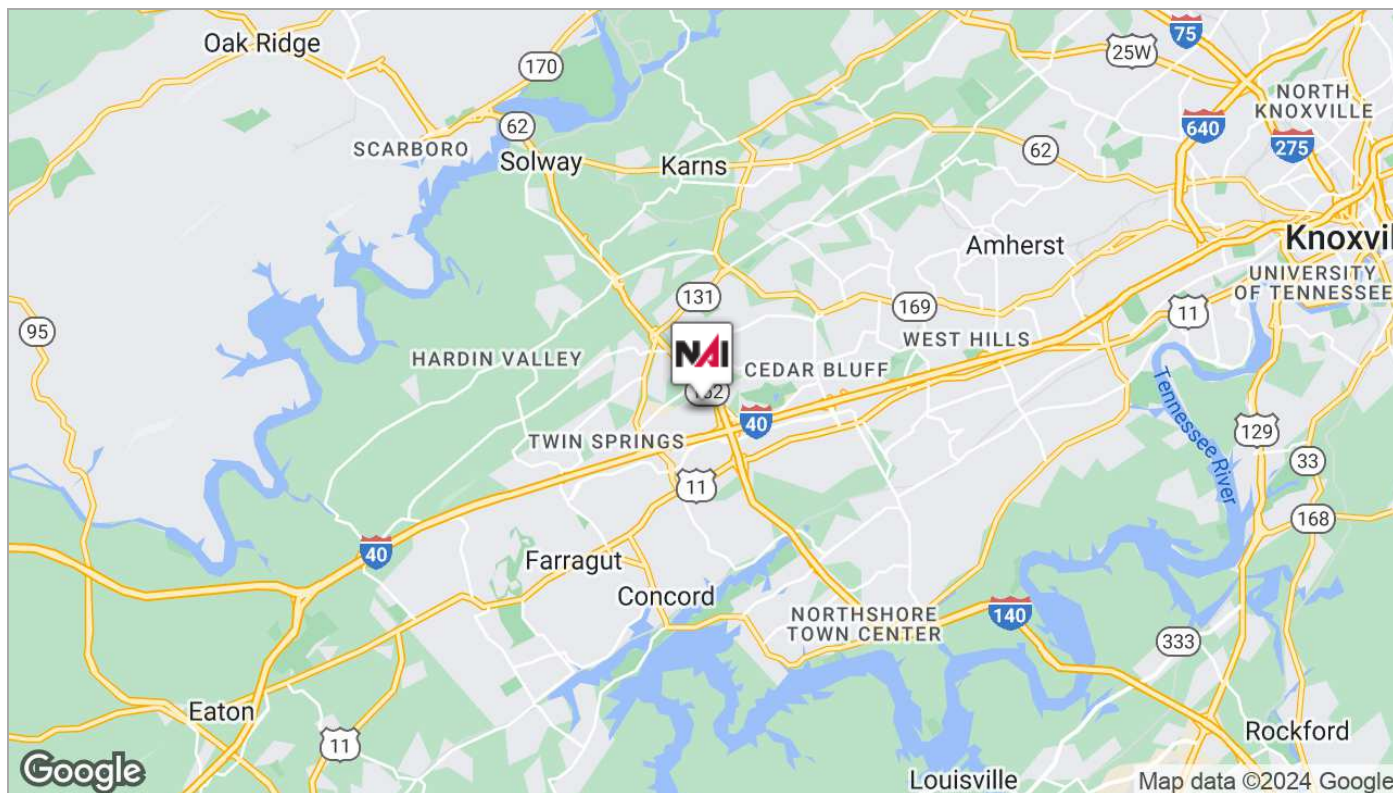
Suite 102- 5,092 SF

5,092 RSF



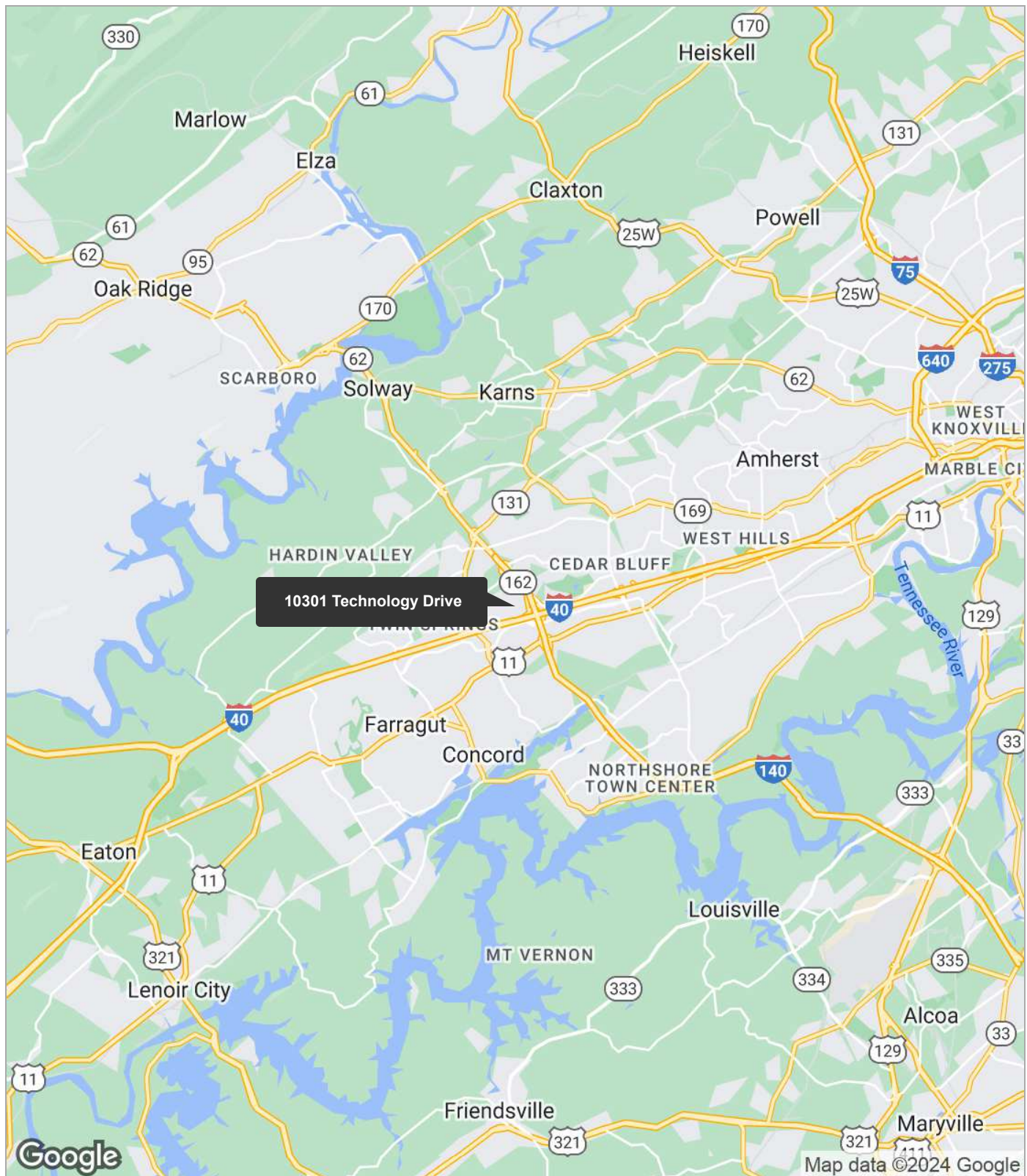
For Lease

10301 Technology Drive



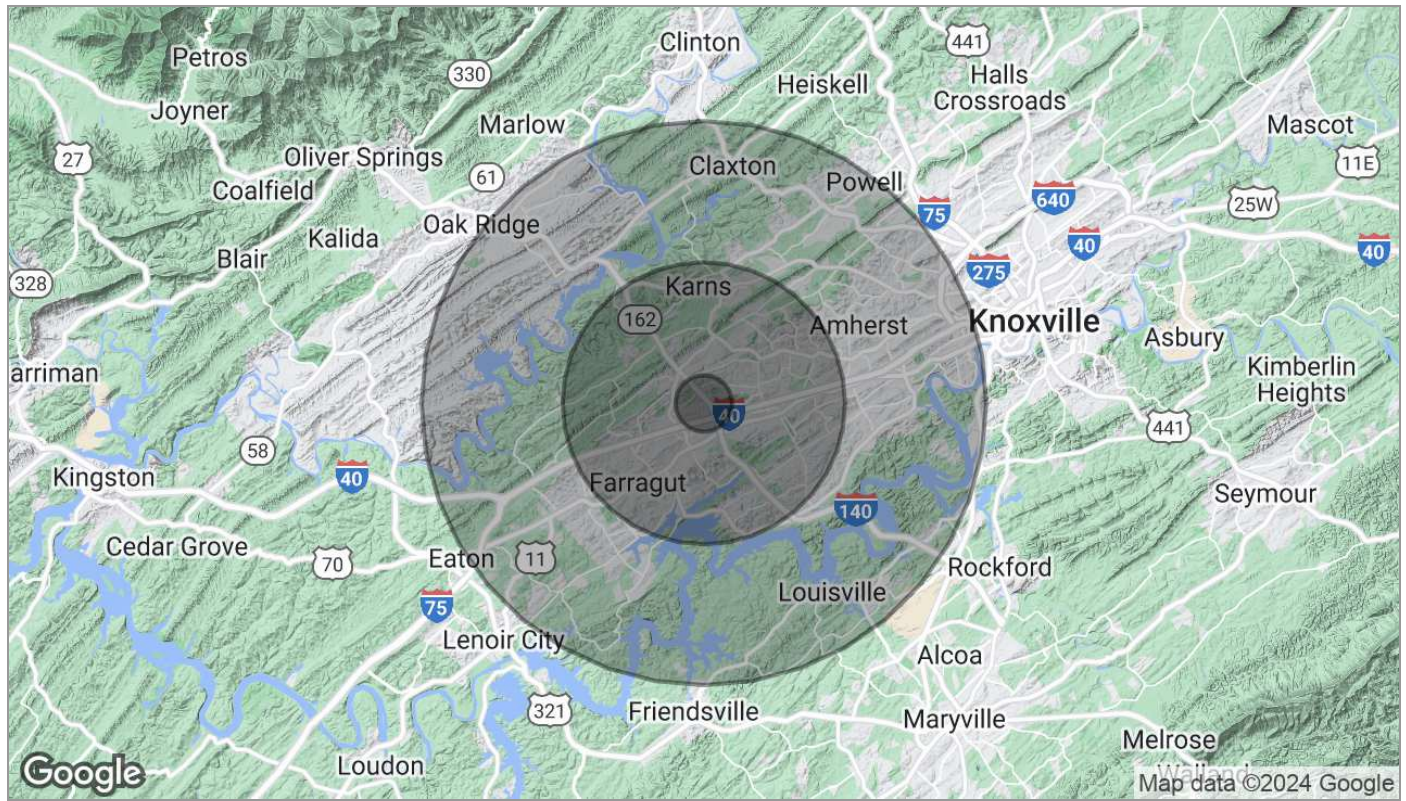
For Lease

10301 Technology Drive



For Lease

10301 Technology Drive



Population	1 Mile	5 Miles	10 Miles
TOTAL POPULATION	2,853	97,035	251,701
MEDIAN AGE	42.1	38.2	38.4
MEDIAN AGE (MALE)	41.5	37.1	37.4
MEDIAN AGE (FEMALE)	43.0	38.8	39.2
Households & Income	1 Mile	5 Miles	10 Miles
TOTAL HOUSEHOLDS	1,118	38,936	102,481
# OF PERSONS PER HH	2.6	2.5	2.5
AVERAGE HH INCOME	\$89,432	\$85,983	\$84,496
AVERAGE HOUSE VALUE	\$205,952	\$237,264	\$251,734
Race	1 Mile	5 Miles	10 Miles
% WHITE	93.0%	89.7%	90.1%
% BLACK	5.4%	5.3%	4.6%
% ASIAN	0.9%	3.0%	2.8%
% HAWAIIAN	0.1%	0.1%	0.0%
% INDIAN	0.0%	0.2%	0.2%
% OTHER	0.0%	0.5%	0.6%
Ethnicity	1 Mile	5 Miles	10 Miles
% HISPANIC	2.3%	4.1%	3.7%

* Demographic data derived from 2020 ACS - US Census