



Land for Sale  
**Former Helma's**  
3.07 Acres | 13,816 SF Structure

## Former Helma's

8608 Asheville Hwy  
Knoxville, TN 37924

## Property Highlights

- Being sold for as-is for land value
- Andrew Johnson Hwy intersection
- All utilities at lot line except for gas
- Very close to KUB power substation
- 13,816 SF existing restaurant structure
- Split zoning CA on front and Ag for back

For more information

**Sam Tate, CCIM**

O: 865 777 3035 | C: 865 806 6517  
state@koellamoore.com

**Ryan McElveen, MBA**

O: 865 531 6400 | C: 865 567 0232  
rmcelveen@koellamoore.com

### OFFERING SUMMARY

<b>Sale Price</b>	\$695,000
<b>Lot Size</b>	3.07 Acres
<b>Sector Plan</b>	MU-SD   ECO-3
<b>Zoning</b>	CA   Ag
<b>Vehicles Per Day</b>	23,596
<b>Frontage</b>	262 Feet

### DEMOGRAPHICS

Stats	Population	Avg. HH Income
<b>1 Mile</b>	1,683	\$70,856
<b>2 Miles</b>	4,559	\$74,271
<b>3 Miles</b>	8,552	\$72,811
<b>Knox Metro</b>	1,172,792	\$77,766



Land For Sale



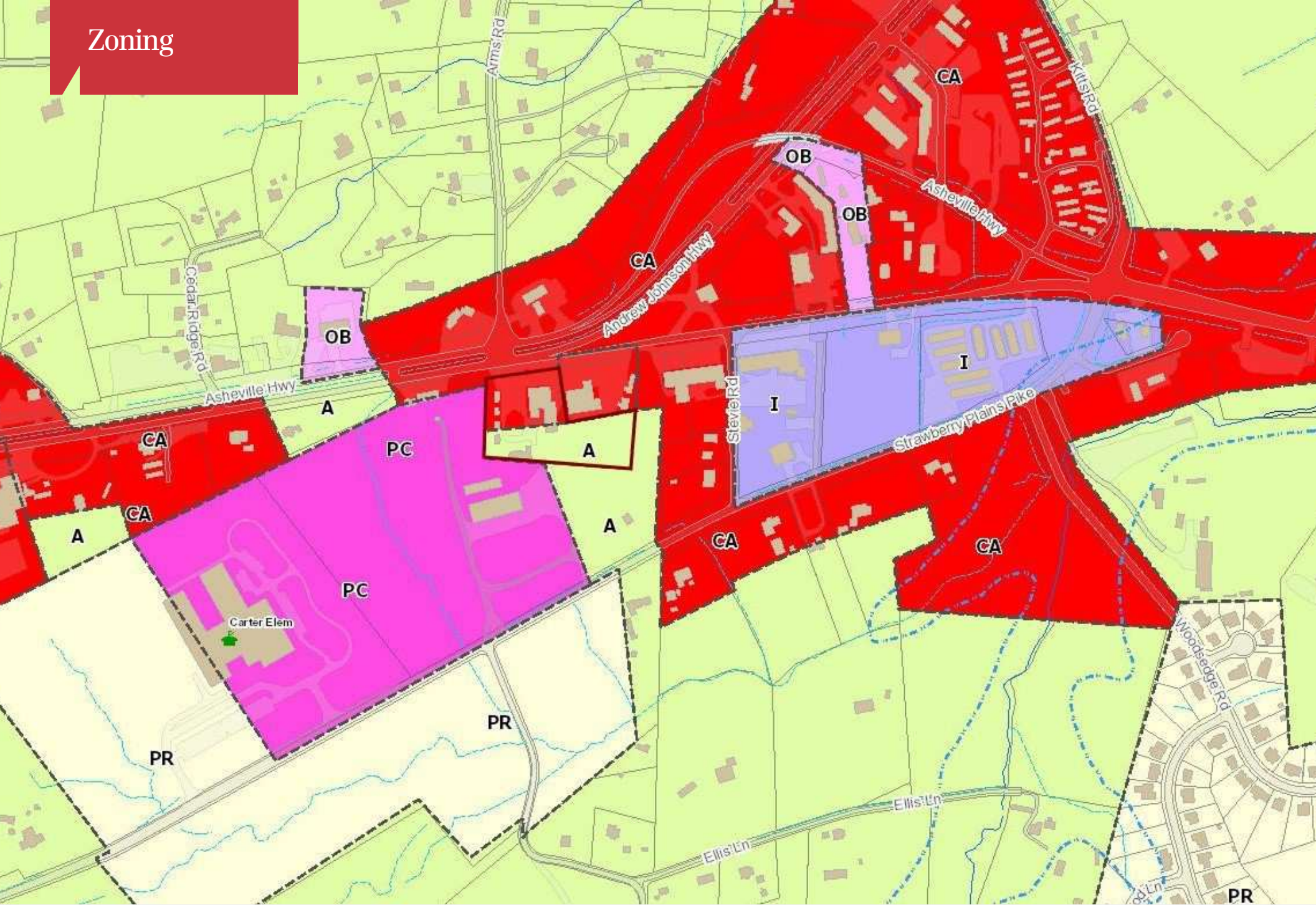


Land For Sale



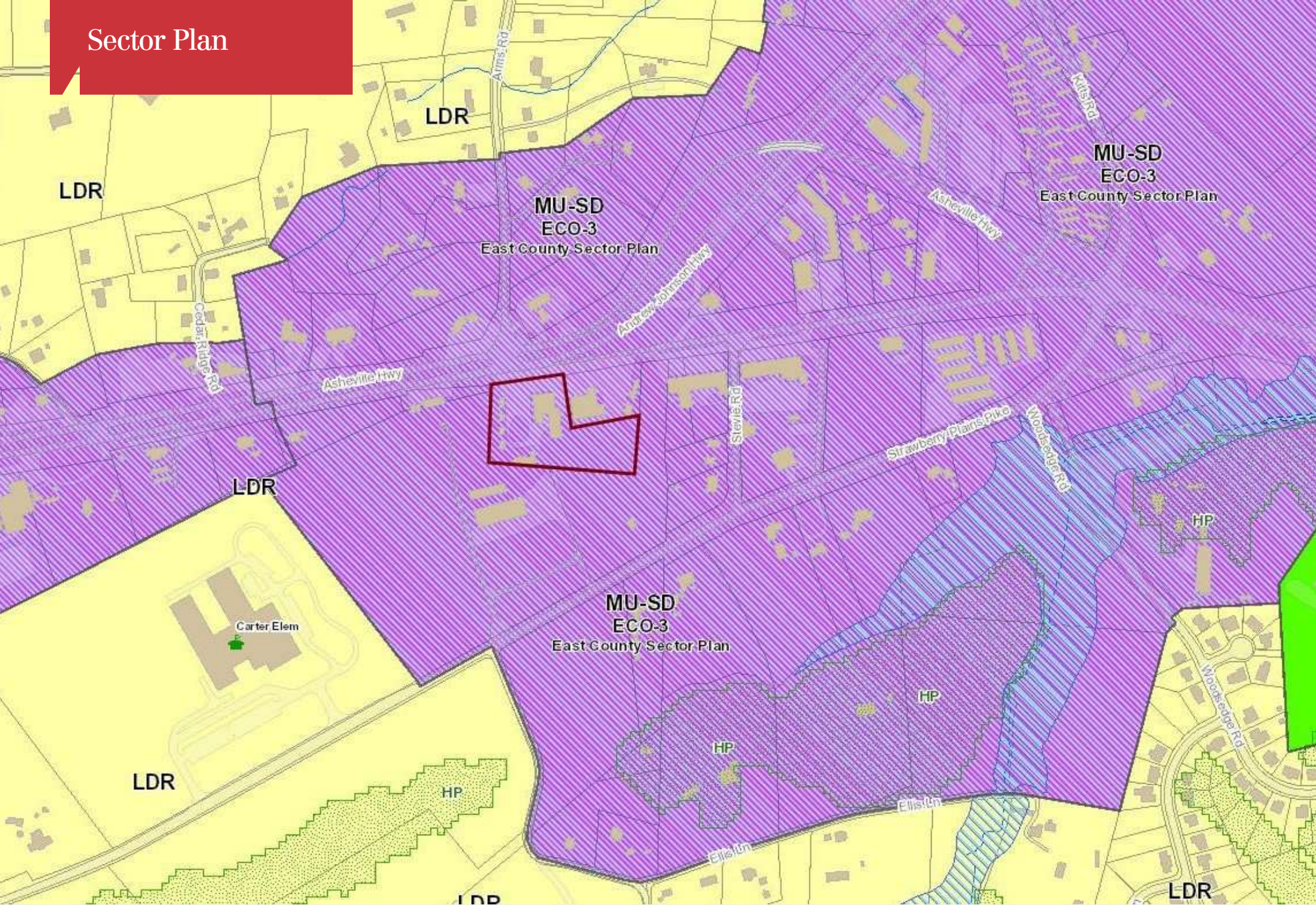


# Zoning



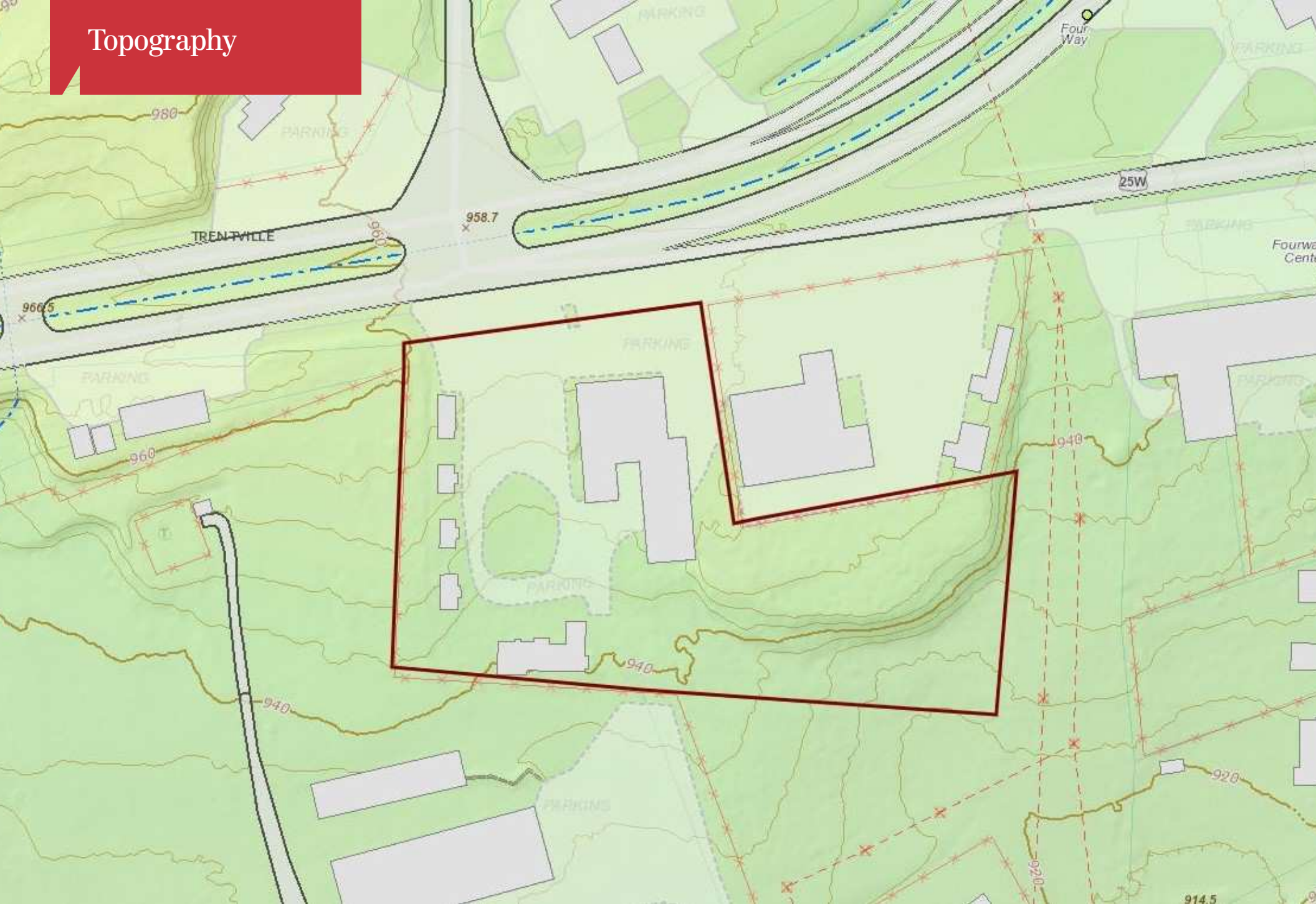


# Sector Plan



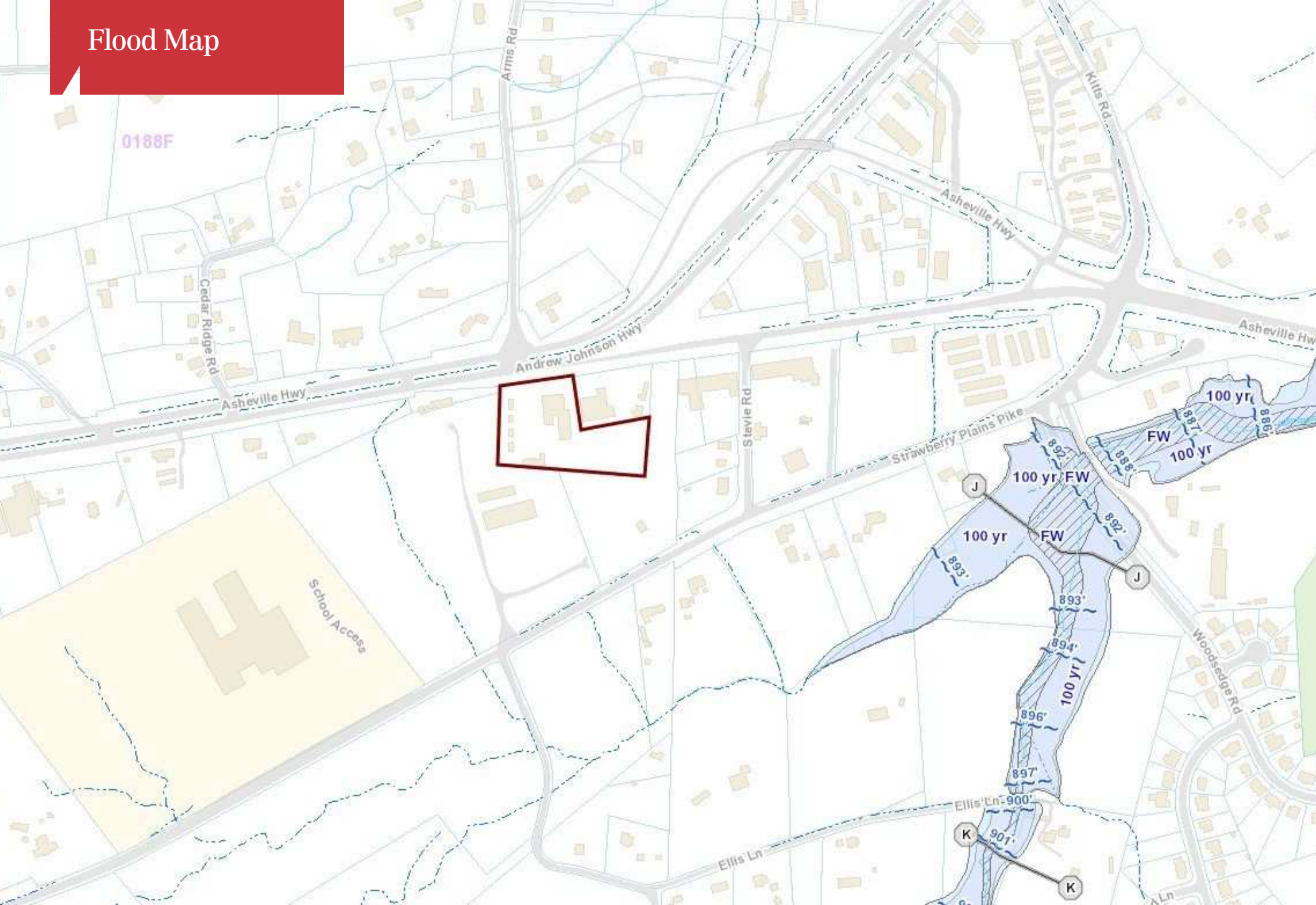


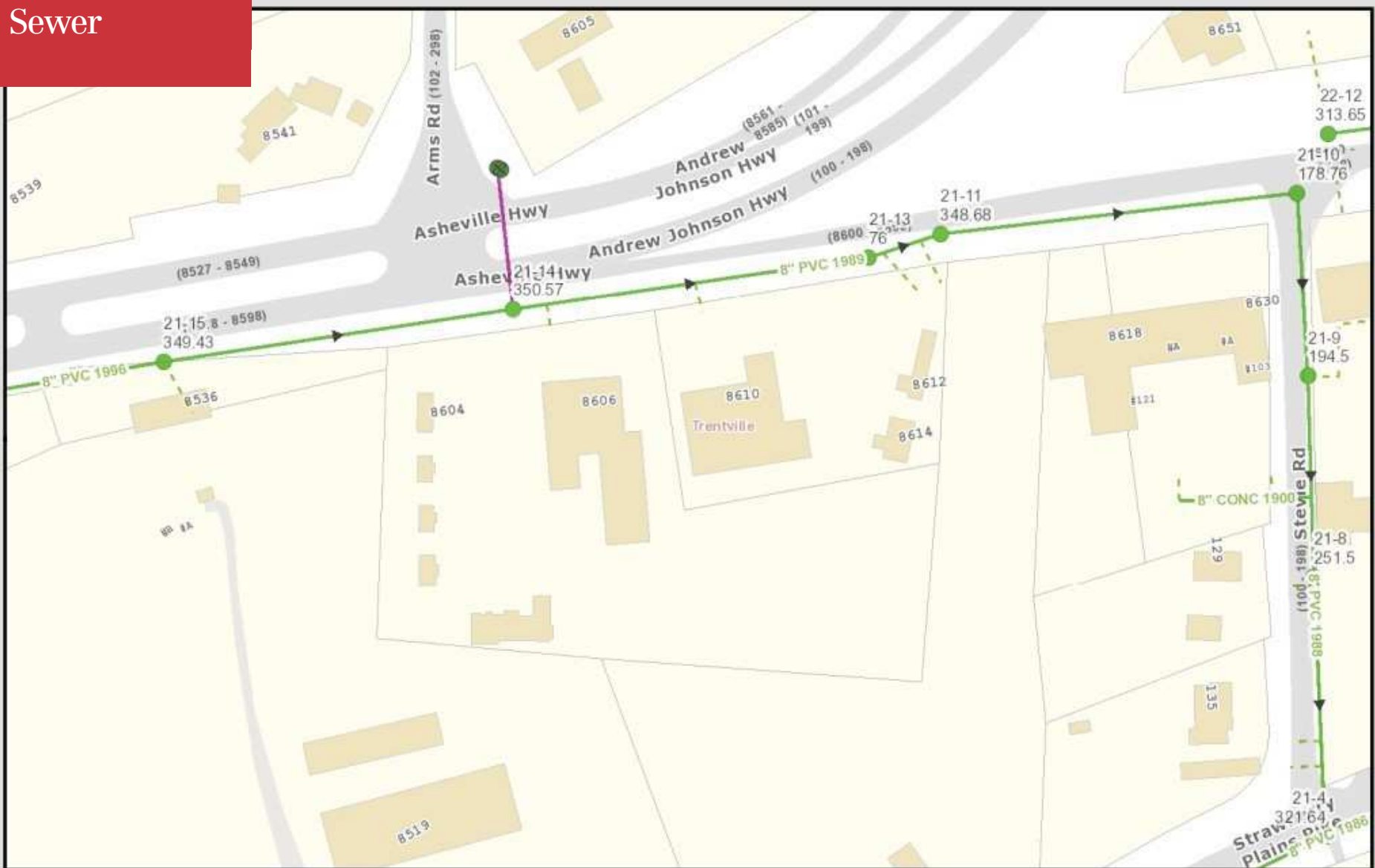
# Topography





# Flood Map





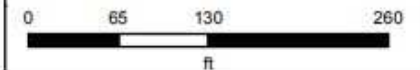
Sewer

**Knoxville Utilities Board**

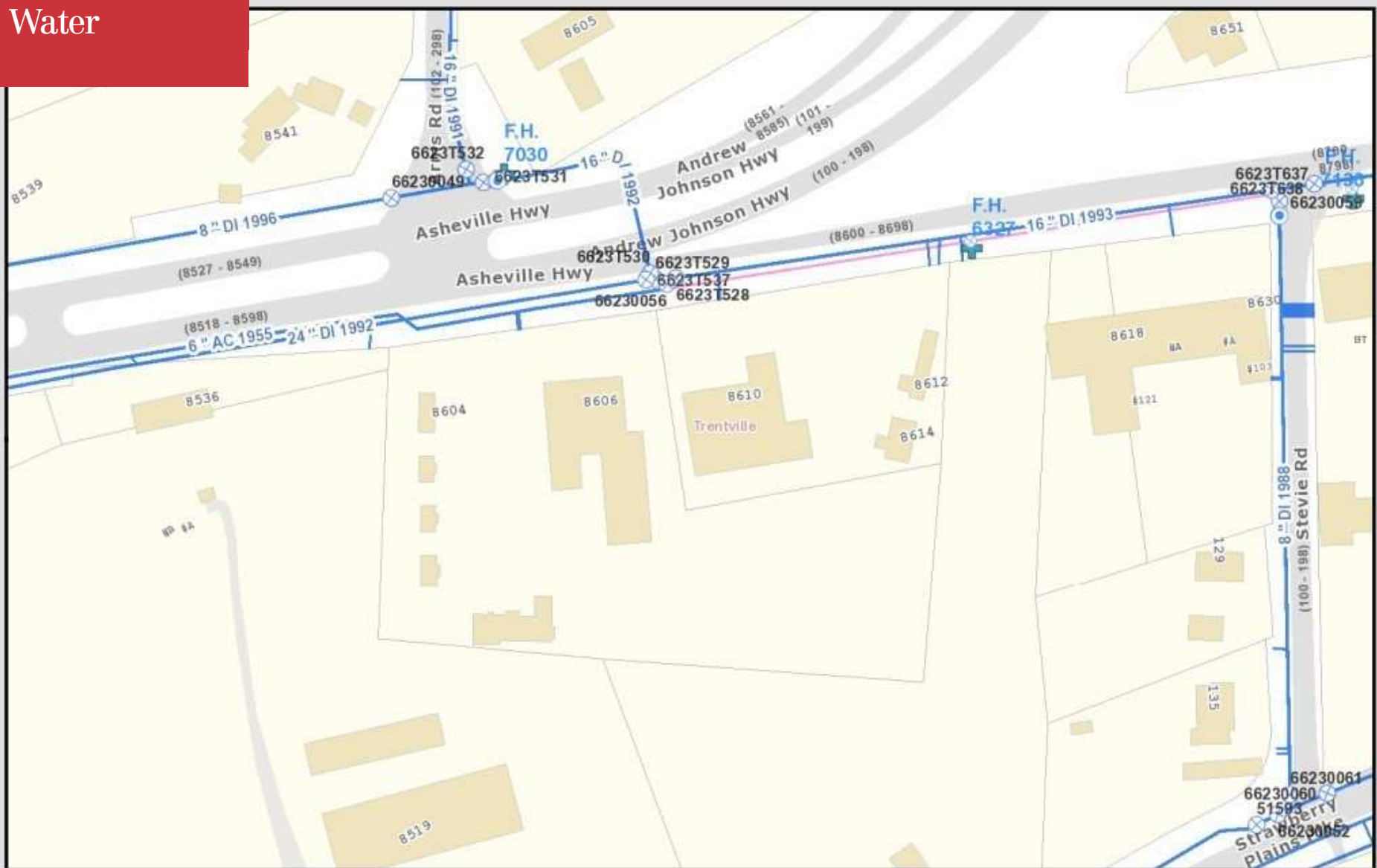
KUB makes no representation or warranty as to the accuracy of his map and its information nor to its fitness for use. Any user of this map product accepts the same AS IS, WITH ALL FAULTS, and assumes all responsibility for the use thereof, and further covenants and agrees to hold KUB harmless from any and all damage, loss, or liability arising from any use of this map product. All rights reserved.



Printed: 8/9/2022 at 10:20:48 AM







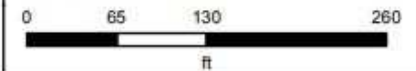
Water

**Knoxville Utilities Board**

KUB makes no representation or warranty as to the accuracy of his map and its information nor to its fitness for use. Any user of this map product accepts the same AS IS, WITH ALL FAULTS, and assumes all responsibility for the use thereof, and further covenants and agrees to hold KUB harmless from any and all damage, loss, or liability arising from any use of this map product. All rights reserved.

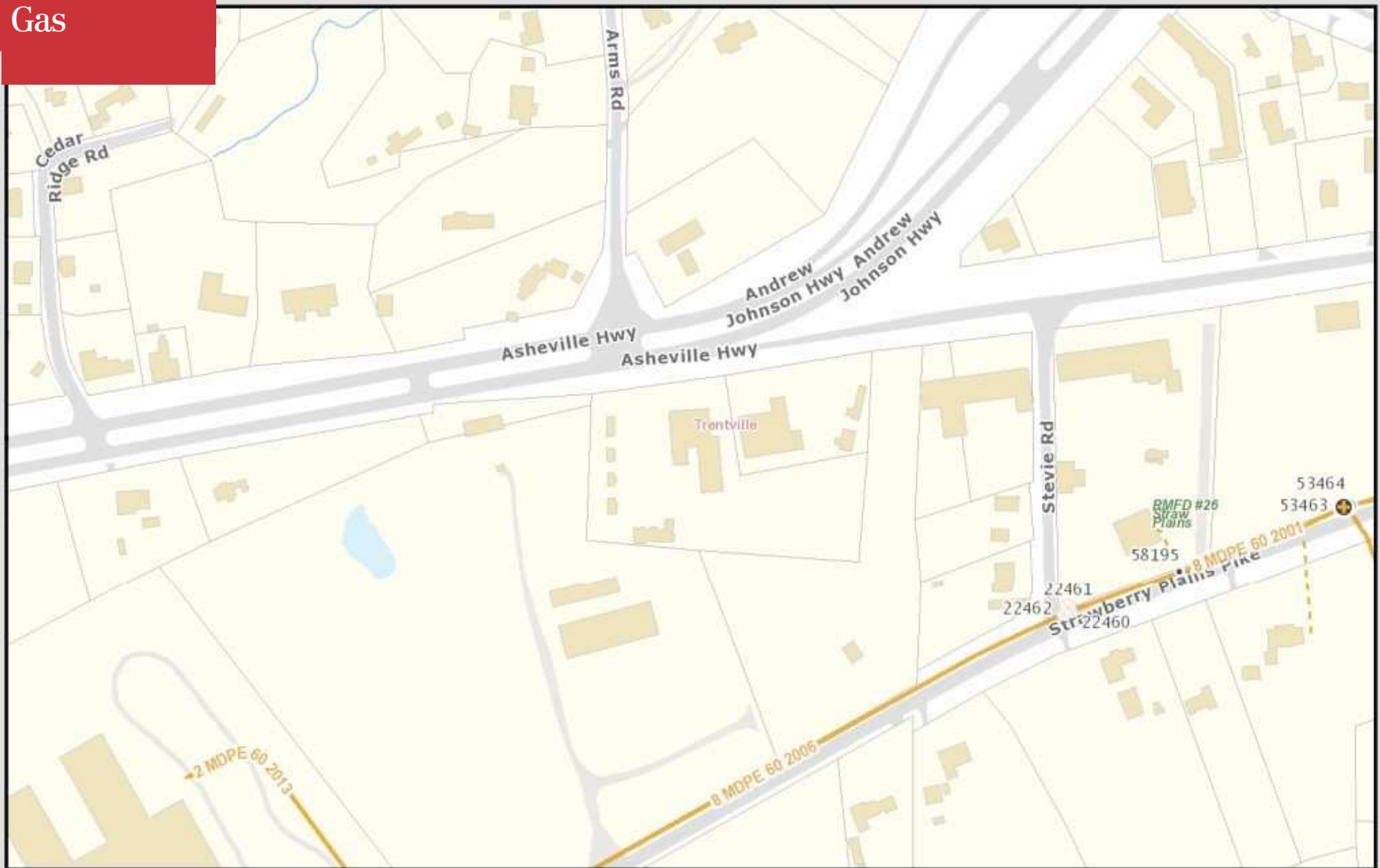


Printed: 8/9/2022 at 10:20:25 AM





Gas



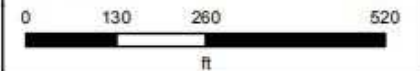
Gas

**Knoxville Utilities Board**

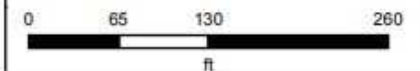
KUB makes no representation or warranty as to the accuracy of his map and its information nor to its fitness for use. Any user of this map product accepts the same AS IS, WITH ALL FAULTS, and assumes all responsibility for the use thereof, and further covenants and agrees to hold KUB harmless from any and all damage, loss, or liability arising from any use of this map product. All rights reserved.



Printed: 8/10/2022 at 2:22:37 PM

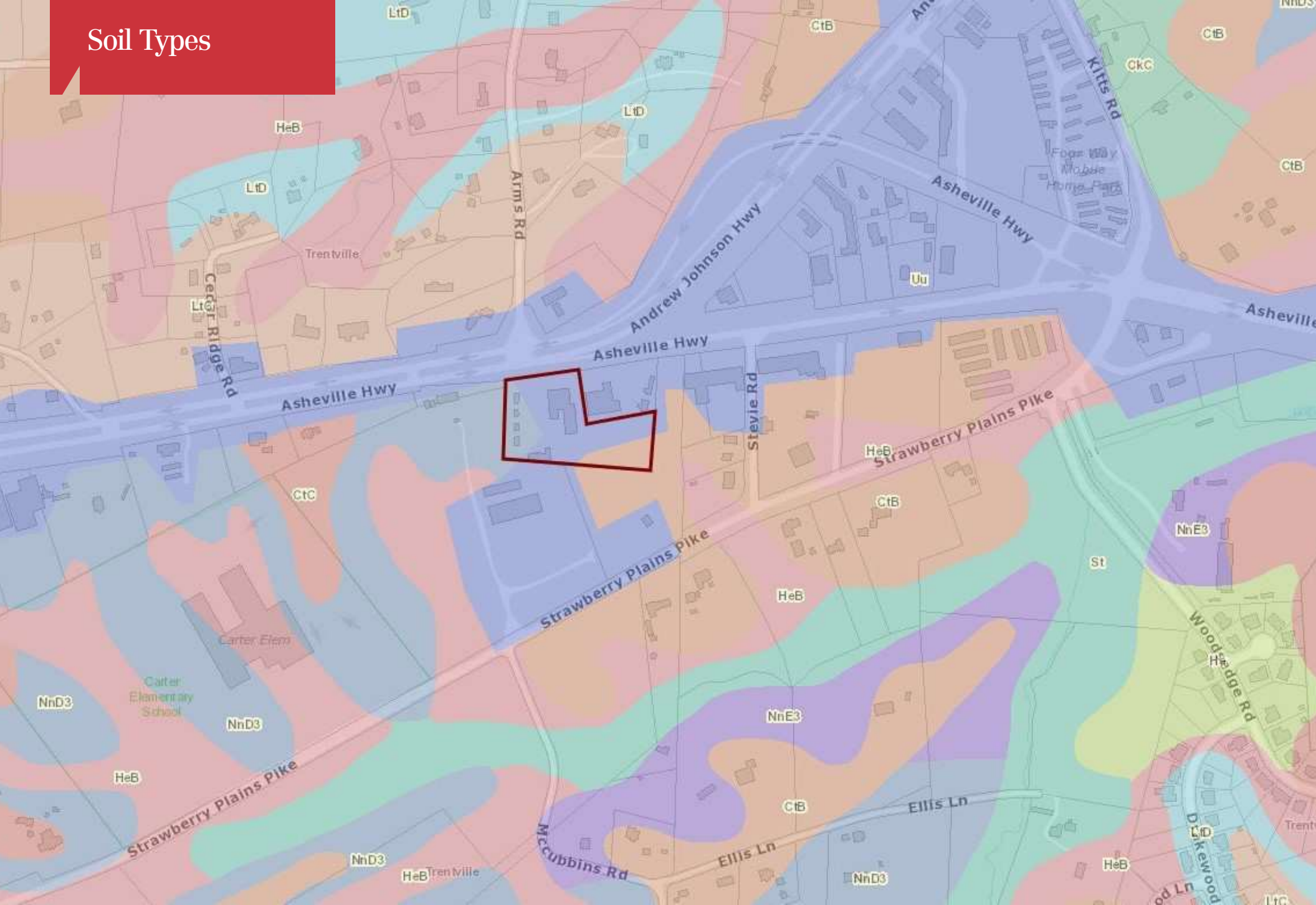








## Soil Types

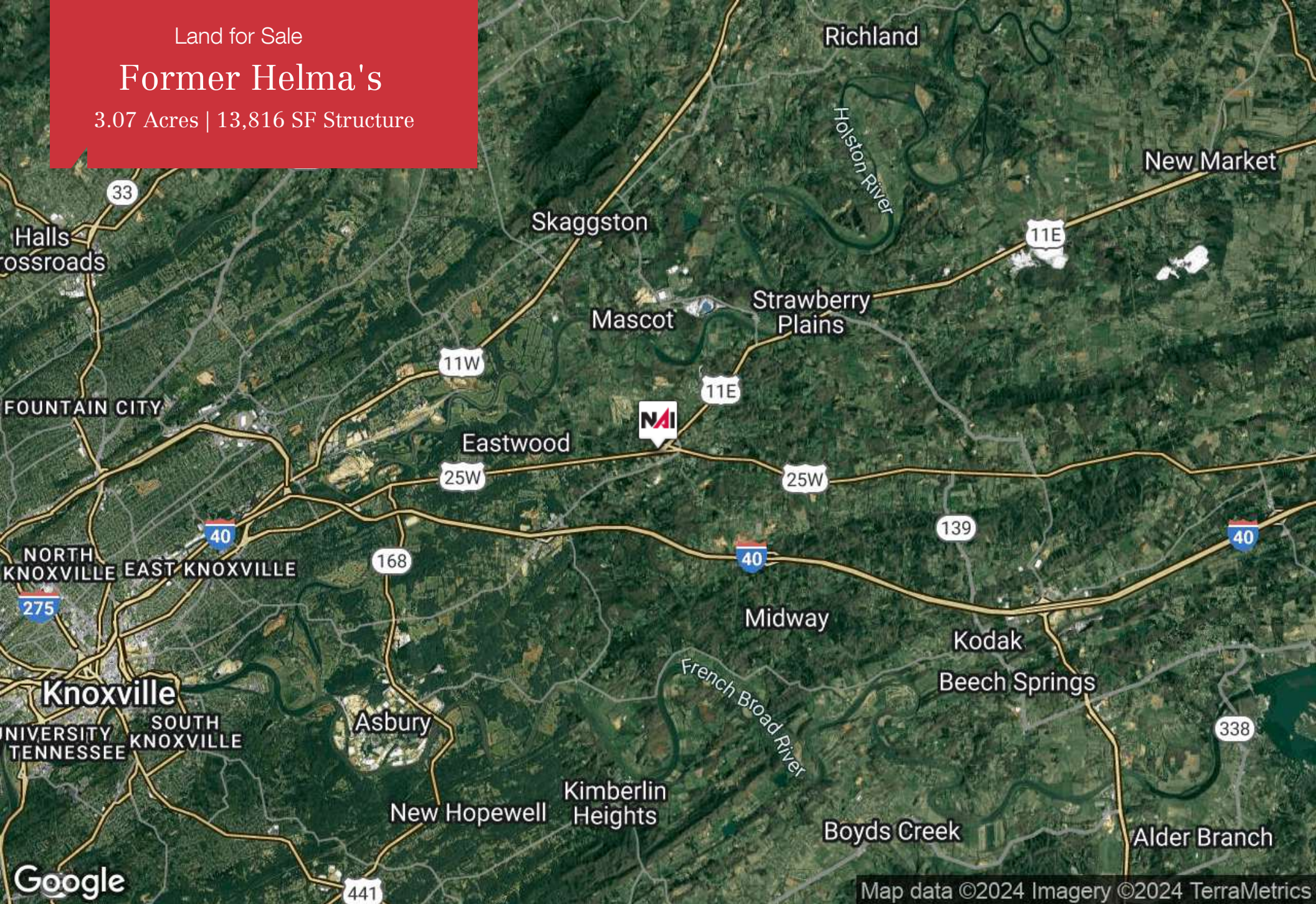




Land for Sale

# Former Helma's

3.07 Acres | 13,816 SF Structure



Map data ©2024 Imagery ©2024 TerraMetrics



Land for Sale

## Former Helma's

3.07 Acres | 13,816 SF Structure



### **SAM TATE, CCIM**

Senior Advisor

state@koellamoore.com

**Direct:** 865.777.3035 | **Cell:** 865.806.6517

TN #207699

### **PROFESSIONAL BACKGROUND**

Sam Tate serves as a Senior Advisor at NAI Koella | RM Moore having started his real estate career in 1980 and specializes in the sale and leasing of commercial properties. Sam is also a member of the East Tennessee CCIM Board of Directors.

Selected clientele includes: U.S. Department of Energy, Boeing Realty Corporation, First Tennessee Bank, Tennova, Charter Communications, Clayton Homes, The Bosch Group, Sanford, Hiwassee College, Freightliner Corporation, Oak Ridge Associated Universities, Walgreen Company, Pitney Bowes, U.S. Postal Service, BASF, Georgia-Pacific, Nova Information Systems, SunTrust Bank, Key Safety Systems, Kindred Healthcare, Lucent Technologies, Interstate Brands Corporation, Jones Brothers, Cumberland Materials, International Paper, Mastec North America, Advance Auto, Food Lion, Robertshaw Industries, Universal Tire, The Venator Group, Air Products, Eckerd, Girl Scouts of the Southern Appalachians, Aisin World Corporation of America, Cumberland Materials, Aaron Rents, Michigan Bulb Company, and Magneco/Metrel.

### **EDUCATION**

B.S.B.A., Real Estate & Urban Development, University of Tennessee, Knoxville, 1981

CCIM Institute, Certified Commercial Investment Member

#### **NAI Koella | RM Moore**

255 N Peters Road, Suite 101  
Knoxville, TN 37923  
865.531.6400



Land for Sale

## Former Helma's

3.07 Acres | 13,816 SF Structure



### RYAN MCELVEEN, MBA

Advisor

rmcelveen@koellamoore.com

**Direct:** 865.531.6400 | **Cell:** 865.567.0232

### PROFESSIONAL BACKGROUND

Ryan McElveen serves as an Advisor at NAI Koella | RM Moore. With 14 years as a real estate broker, McElveen has an extensive background in sales, leasing, and creative financing of commercial properties, while predominantly focused on larger scale marketing of property.

Ryan began his career in 2008 as a licensed sole proprietor broker in California after finishing his baccalaureate at California State University, Northridge, with degrees in Real Estate and Finance. In 2010, after incorporating his brokerage and obtaining a Master's in Business Administration from Pepperdine University, Ryan had a team of 15 to 20 salespersons actively engaging clients and was focused primarily on acting as principal in seller-financed real estate transactions in California, Arizona, and Washington.

By 2015, Ryan had expanded his brokerage into Nevada and Washington and was actively pursuing transactions in each state until he joined MGR Real Estate in 2018 as a Broker Associate to better focus his talents and partner with regional commercial real estate brokers in California. In 2020, Ryan moved to Tennessee to focus on becoming a part of Celebrate Recovery at Faith Promise and to be closer to his father and family in Kingston. He later became affiliated with NAI Koella | RM Moore the following year. Previously Licensed Real Estate Broker in Nevada, Washington, and actively licensed in California (DRE #01850467).

### EDUCATION

M.B.A., Pepperdine University, 2010

B.S.B.A, Real Estate & Finance, California State University, Northridge, 2008

#### NAI Koella | RM Moore

255 N Peters Road, Suite 101  
Knoxville, TN 37923  
865.531.6400