

For Sale

Bearden Office Building

4,047 SF | \$545,000



342 Troy Circle

342 Troy Circle
Knoxville, Tennessee 37919

Property Highlights

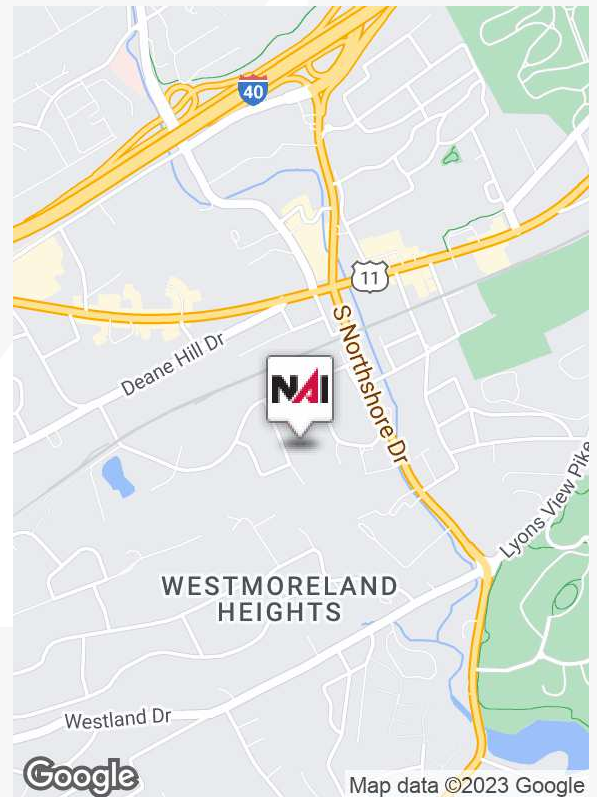
- Prime location
- Easy access to all parts of town
- Functional layout
- Central, yet quiet office park
- Campus like setting

Property Description

Well built out office space with sufficient parking, high end finishes and an outstanding location.

Functional layout with lobby, two conference rooms, multiple offices.

Easy access to all of town, central yet quiet location and outstanding neighbors further highlight this offering.



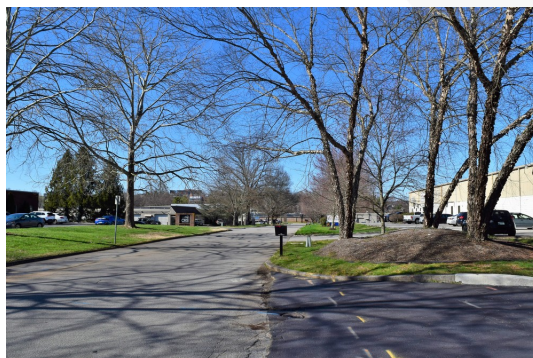
For more information

Michael Moore

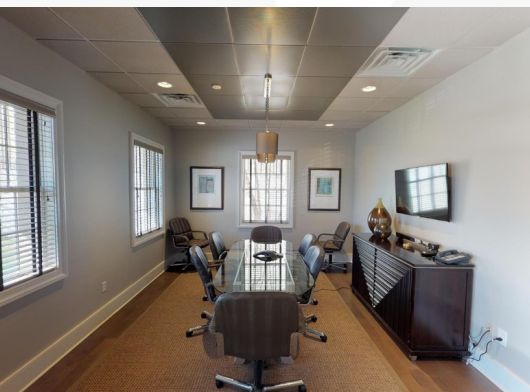
O: 865 531 6400

mmoore@koellamoore.com

Exterior Photos



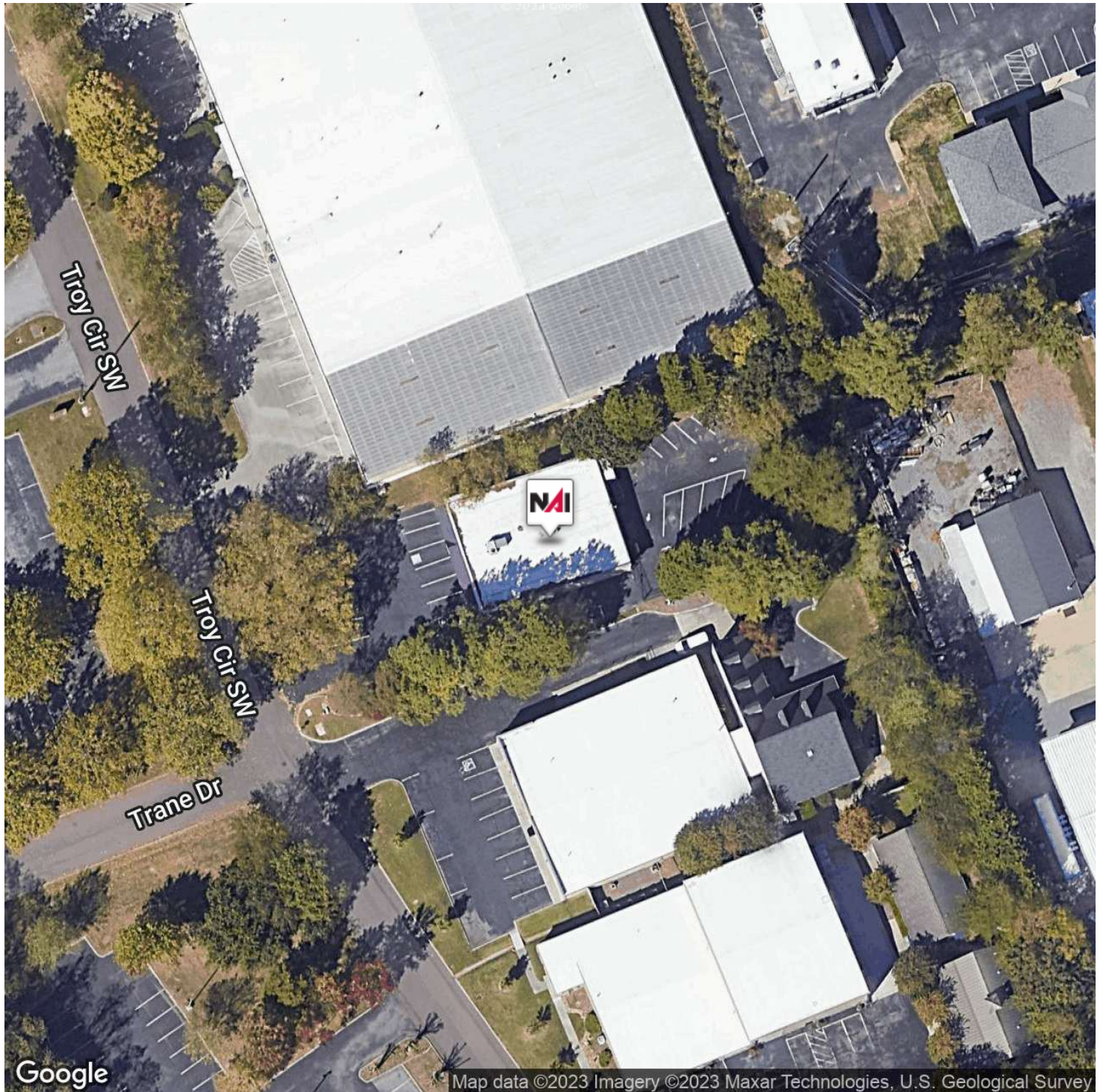
Interior Photos



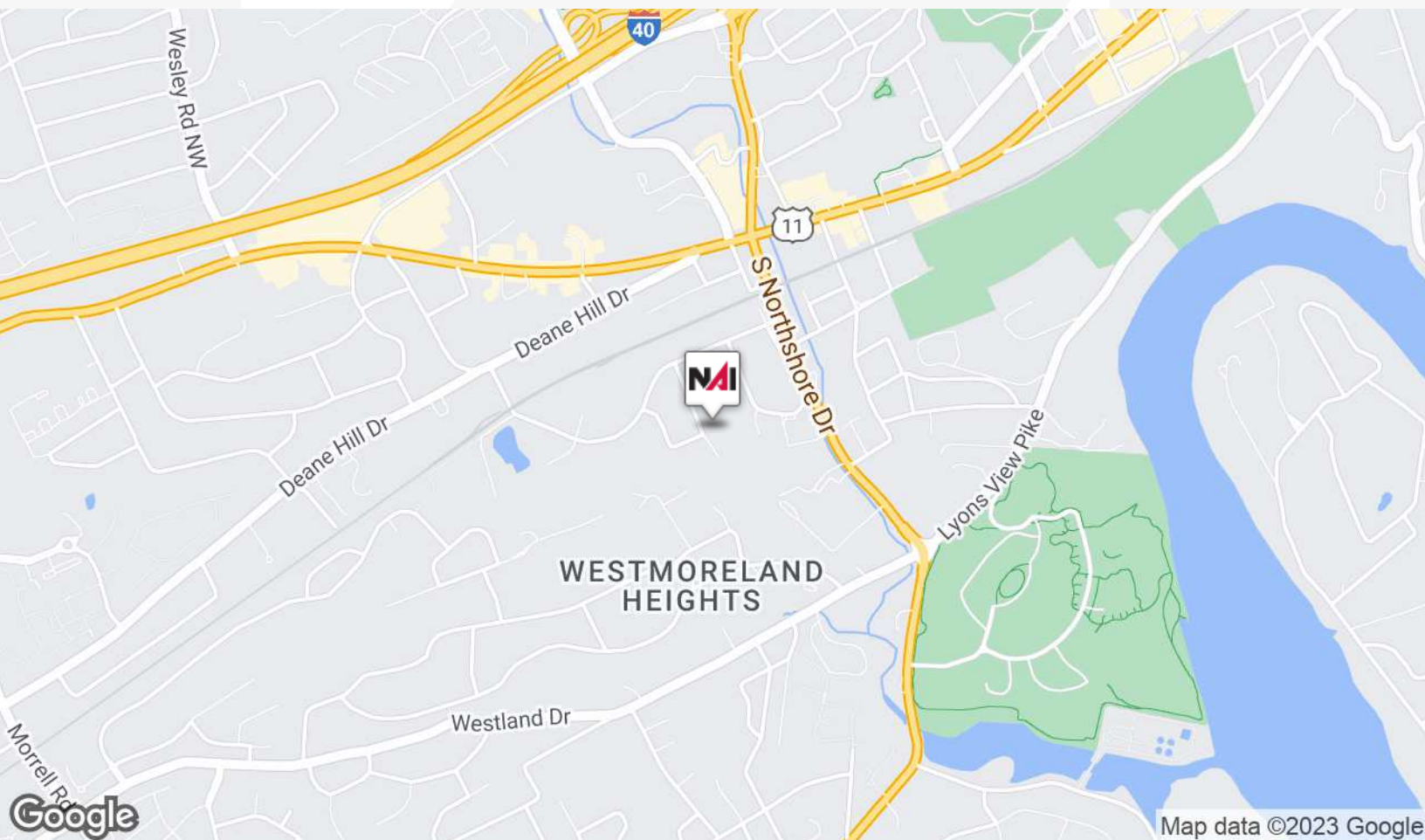
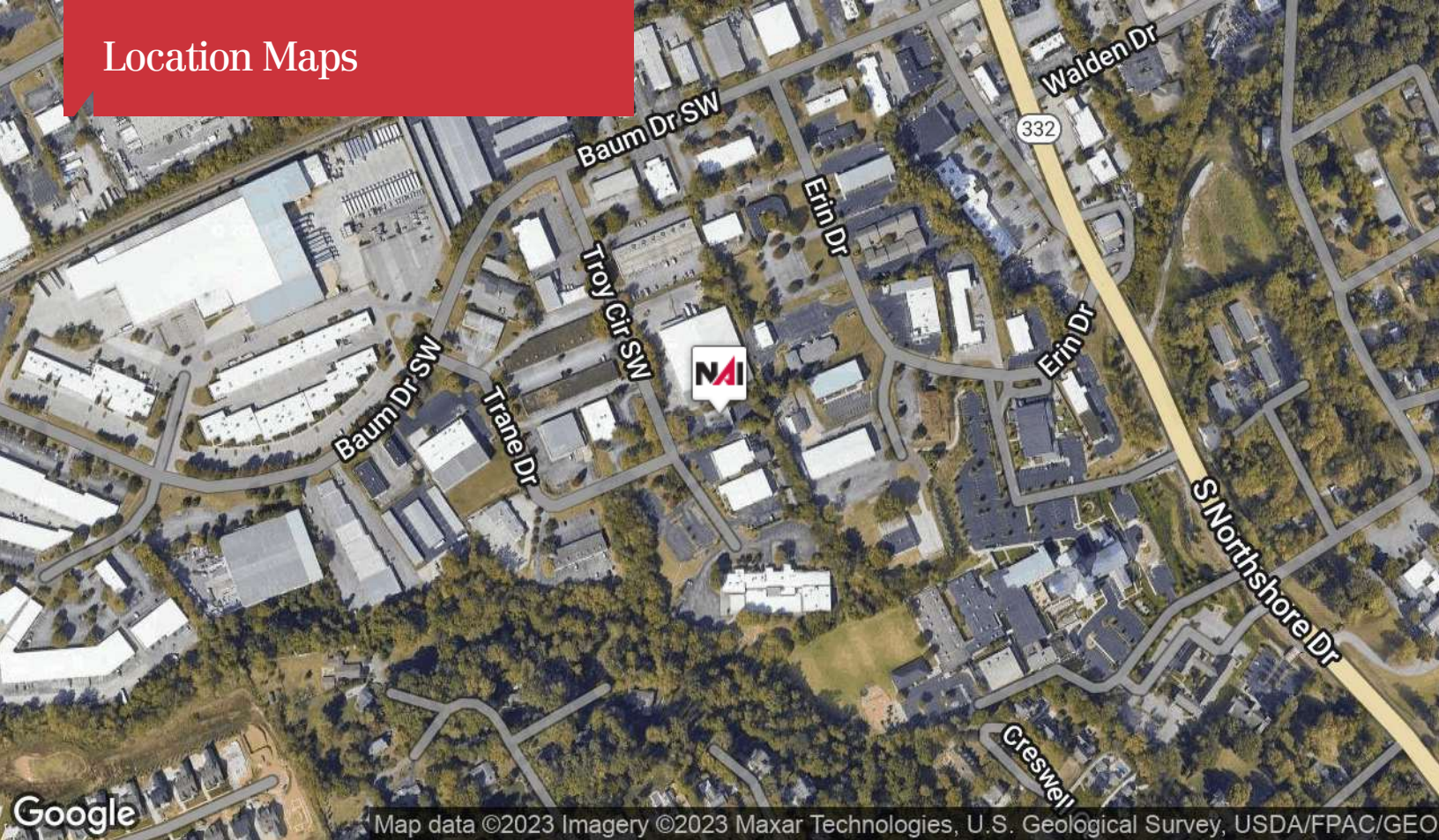
For Sale - 342 Troy Circe

Aerial Map

4,047 SF | \$545,000



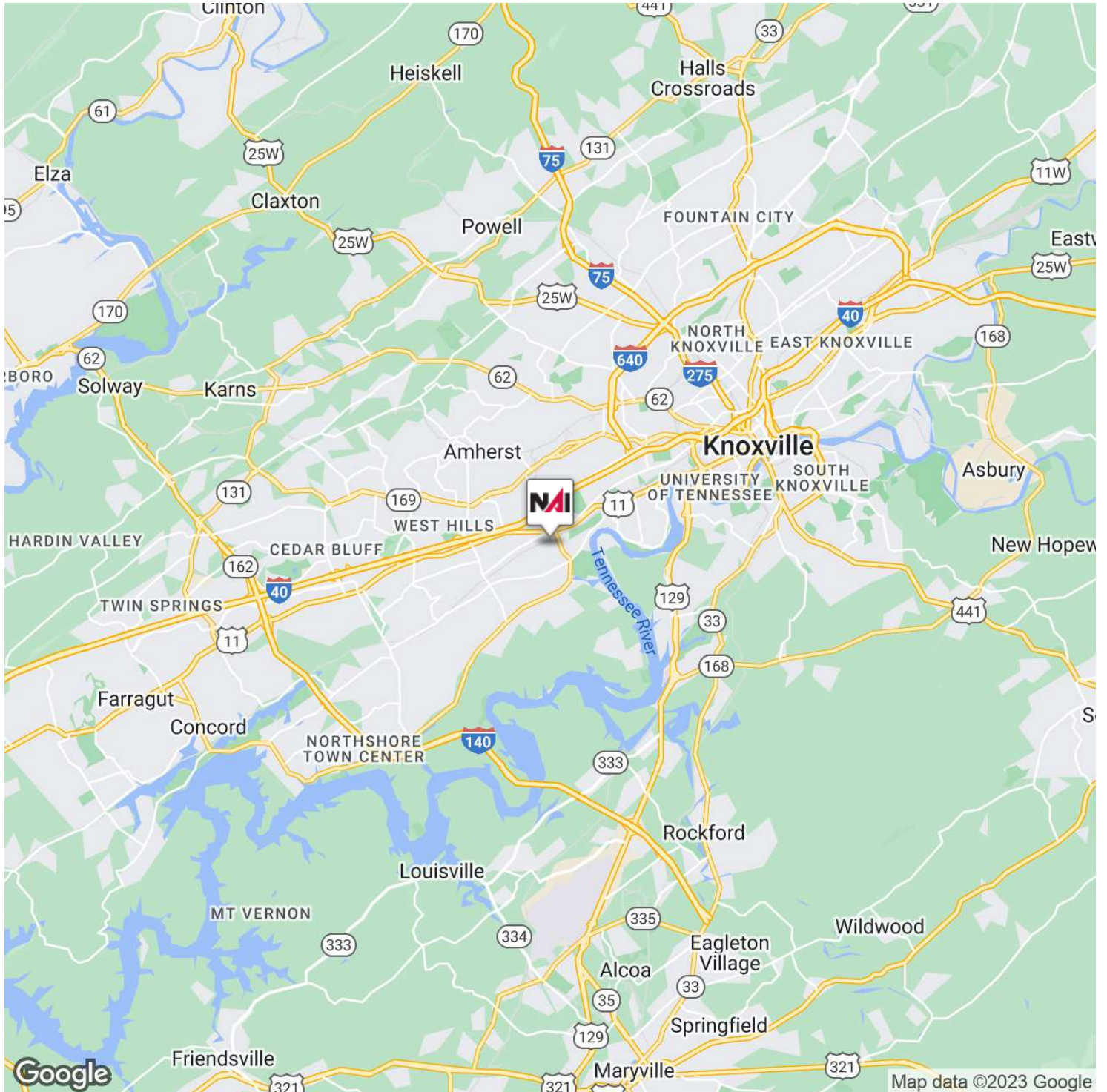
Location Maps



For Sale - 342 Troy Cir/ce

Regional Map

4,047 SF | \$545,000



For Sale - 342 Troy Circe

4,047 SF | \$545,000



Michael Moore

Senior Advisor

865.531.6400 tel

865.221.9442 cell

mmoore@koellamoore.com

Memberships & Affiliations

Knoxville Association of Realtor's CIE

Tennessee Association of Realtor's

Past Board Member of the Teton Board of Realtor's Ethics Council

2017, 2019, 2020, 2021 CoStar Retail Power Broker

2020 NAI Koella/RM Moore, Inc

Education

University of Tennessee College of Journalism, 1992-1997

Professional Background

Michael Moore has a diverse background in real estate and facility management. Active in the Knoxville brokerage community since 2010, Michael has hit the ground running. He has significant experience in NNN leasing, vacant land development, bank REO properties, and asset sales. Clients range from local clients, US clients from coast to coast, and international clients ranging from Singapore, Australia, New Zealand and Europe. Prior representations include- Best Buy, Walgreen's, Bojangles, Gatorstep, Mortgage Investors Group, Tennova and more.

Michael honed his craft in the Rocky Mountains, holding broker licenses in Idaho and Wyoming. Accomplishments included the marketing and sale of several large working and guest ranches totaling over 3000 acres, income producing resort assets and select mountain properties.

Prior to embarking upon a career in real estate, Michael was General Manager of several resort properties and service related establishments, including several restaurant start ups.

Combining a knack for communication, intense and comprehensive diligence and market knowledge, Michael is able to bring multiple faceted skills to the various sides of real estate brokerage.

For Sale - 342 Troy Circe

4,047 SF | \$545,000